

DRAWING SHALL BE INTERPRETED IN ACCORDANCE WITH ISO 128-1:2003

DIMENSIONS ARE IN MILLIMETERS

UNLESS OTHERWISE SPECIFIED, TOLERANCES ARE:

X.X = ± 0.4
X.XX = ± 0.20

ANGLES $\pm 1^\circ$
DRAFT $\pm 1^\circ$
ALL HOLE $\varnothing +0.10/-0.05$

Hill-Rom and its subsidiaries.
ALL RIGHTS RESERVED



CONFIDENTIAL INFORMATION:

This drawing includes Confidential Information owned by Hill-Rom Services, Inc. that may not be reproduced, altered, disclosed to others, published, or used except as permitted in writing by Hill-Rom on behalf of and for the sole benefit of Hill-Rom.
All other uses are STRICTLY PROHIBITED.
©2011 Hill-Rom and its subsidiaries

DESCRIPTION:

MC600 Wheel Base Sub Assembly 250-150

MATERIAL:

DO NOT SCALE THIS DRAWING

DRAWN BY:

CrawfoR

ENGINEER:

SIZE: A3

SCALE: 1:7

SHEET: 1 of 2

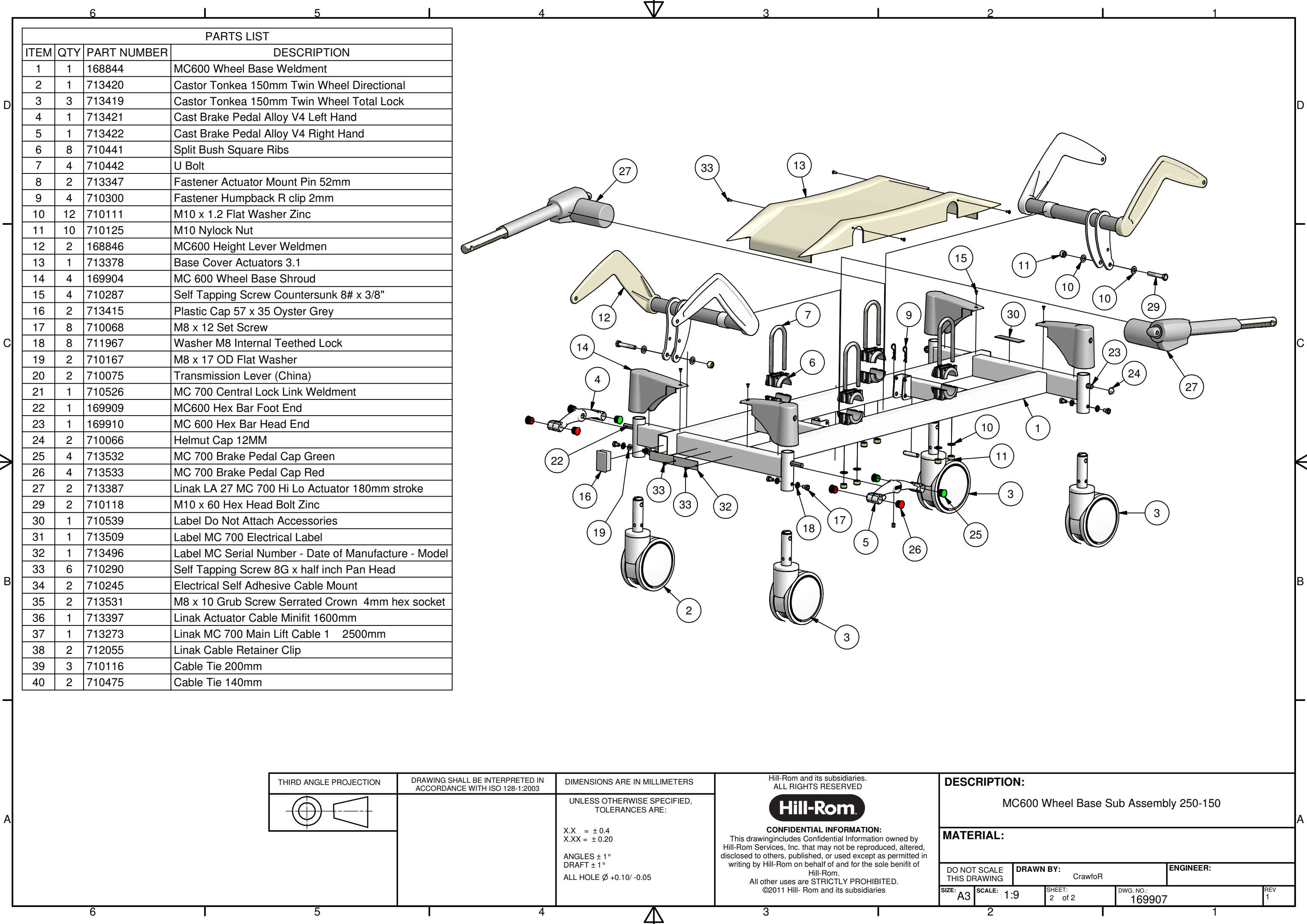
DWG. NO.:

169907


REV 1

REVISION HISTORY

REV	DESCRIPTION	DATE	APPROVED
1		25/7/2011	RC



PARTS LIST			
ITEM	QTY	PART NUMBER	DESCRIPTION
1	1	168844	MC600 Wheel Base Weldment
2	1	713420	Castor Tonkea 150mm Twin Wheel Directional
3	3	713419	Castor Tonkea 150mm Twin Wheel Total Lock
4	1	713421	Cast Brake Pedal Alloy V4 Left Hand
5	1	713422	Cast Brake Pedal Alloy V4 Right Hand
6	8	710441	Split Bush Square Ribs
7	4	710442	U Bolt
8	2	713347	Fastener Actuator Mount Pin 52mm
9	4	710300	Fastener Humpback R clip 2mm
10	12	710111	M10 x 1.2 Flat Washer Zinc
11	10	710125	M10 Nylock Nut
12	2	168846	MC600 Height Lever Weldmen
13	1	713378	Base Cover Actuators 3.1
14	4	169904	MC 600 Wheel Base Shroud
15	4	710287	Self Tapping Screw Countersunk 8# x 3/8"
16	2	713415	Plastic Cap 57 x 35 Oyster Grey
17	8	710068	M8 x 12 Set Screw
18	8	711967	Washer M8 Internal Teethed Lock
19	2	710167	M8 x 17 OD Flat Washer
20	2	710075	Transmission Lever (China)
21	1	710526	MC 700 Central Lock Link Weldment
22	1	169909	MC600 Hex Bar Foot End
23	1	169910	MC 600 Hex Bar Head End
24	2	710066	Helmut Cap 12MM
25	4	713532	MC 700 Brake Pedal Cap Green
26	4	713533	MC 700 Brake Pedal Cap Red
27	2	713387	Linak LA 27 MC 700 Hi Lo Actuator 180mm stroke
29	2	710118	M10 x 60 Hex Head Bolt Zinc
30	1	710539	Label Do Not Attach Accessories
31	1	713509	Label MC 700 Electrical Label
32	1	713496	Label MC Serial Number - Date of Manufacture - Model
33	6	710290	Self Tapping Screw 8G x half inch Pan Head
34	2	710245	Electrical Self Adhesive Cable Mount
35	2	713531	M8 x 10 Grub Screw Serrated Crown 4mm hex socket
36	1	713397	Linak Actuator Cable Minifit 1600mm
37	1	713273	Linak MC 700 Main Lift Cable 1 2500mm
38	2	712055	Linak Cable Retainer Clip
39	3	710116	Cable Tie 200mm
40	2	710475	Cable Tie 140mm

THIRD ANGLE PROJECTION	DRAWING SHALL BE INTERPRETED IN ACCORDANCE WITH ISO 128-1:2003	DIMENSIONS ARE IN MILLIMETERS	Hill-Rom and its subsidiaries. ALL RIGHTS RESERVED	DESCRIPTION:
		UNLESS OTHERWISE SPECIFIED, TOLERANCES ARE: X.X = ± 0.4 X.XX = ± 0.20 ANGLES ± 1° DRAFT ± 1° ALL HOLE Ø +0.10/ -0.05	<div>Hill-Rom</div> <p>CONFIDENTIAL INFORMATION: This drawing includes Confidential Information owned by Hill-Rom Services, Inc. that may not be reproduced, altered, disclosed to others, published, or used except as permitted in writing by Hill-Rom on behalf of and for the sole benefit of Hill-Rom. All other uses are STRICTLY PROHIBITED. ©2011 Hill- Rom and its subsidiaries</p>	MC600 Wheel Base Sub Assembly 250-150
MATERIAL:				
DO NOT SCALE THIS DRAWING		DRAWN BY: CrawfoR		ENGINEER:
SIZE: A3	SCALE: 1:9	SHEET: 2 of 2	DWG. NO.: 169907	REV 1