

MAXI SKY  
Track solutions

ARJOHUNTLEIGH



...with people in mind

# SUPPORTING A TOTAL CEILING LIFT CONCEPT

ArjoHuntleigh track solutions provide optimised systems to support the use of *Maxi Sky* ceiling lifts in the improvement of patient handling at care facilities.

ArjoHuntleigh can create the ideal track configuration for your needs. There is a solution for every type of ceiling and the system flexibility to meet any layout challenge. System configurations are available to support patient handling routines on a permanent basis, or for semi-permanent or temporary situations.

The most commonly used track solution is a permanent set-up – the *KWIKtrak* system. *KWIKtrak* includes single tracks, curves, X-Y traverse systems, gates, turntables, exchangers and numerous

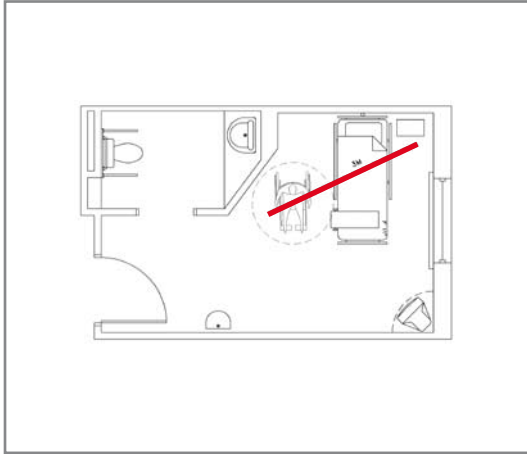
attachment products – a range of options that can be combined to create the ideal layout for your specific requirements.

However, not all facilities require a permanent solution, so *KWIKtrak* can also be assembled as a freestanding Semi-Permanent Rack, both as a single track or X-Y system. And, if a flexible ceiling lift solution is required for temporary patient handling duties, the portable freestanding *Easytrak*<sup>FS</sup> gantry is the most convenient option.

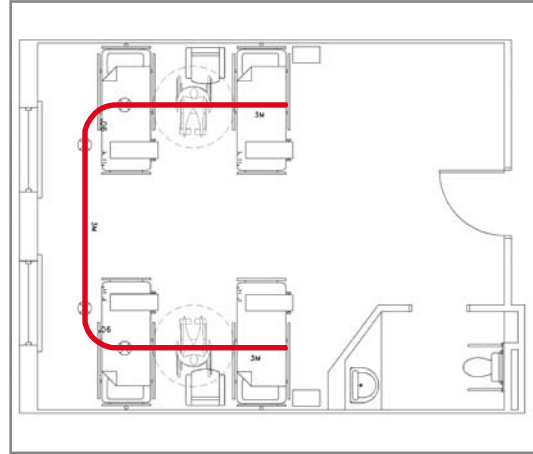


This permanent *KWIKtrak* solution includes an exchanger to serve two facing rooms as a shared connection to the corridor track in an elderly care facility.

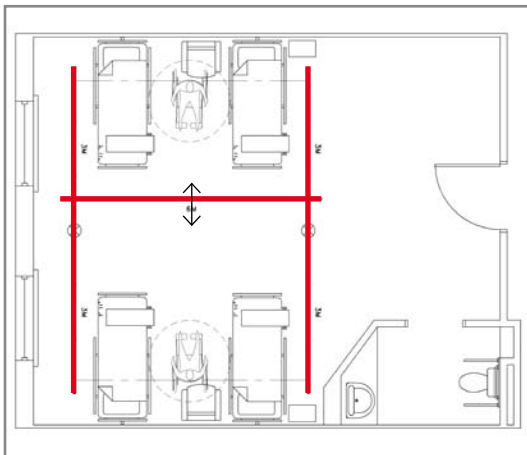
# TYPICAL INSTALLATION LAYOUTS



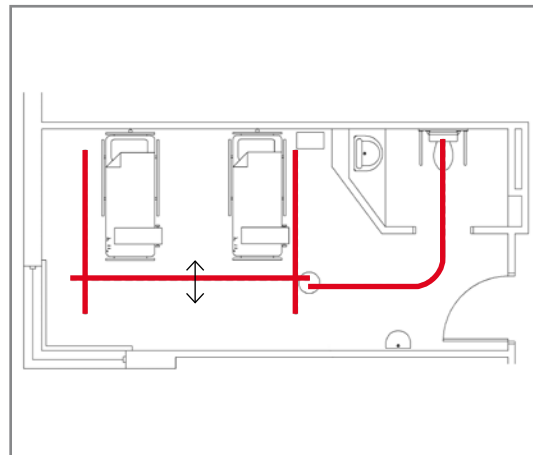
A straight track intended for direct transfers between bed and wheelchair, day chair, etc. With the track at a slight angle to the bed, it is easier to find the optimum point for lifting the patient.



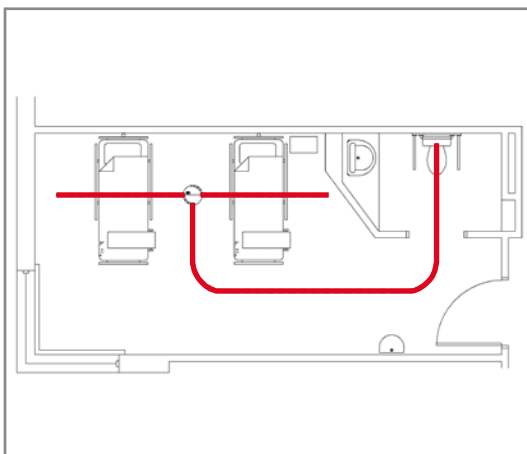
One single U-shaped track can provide good coverage in a care environment with multiple beds.



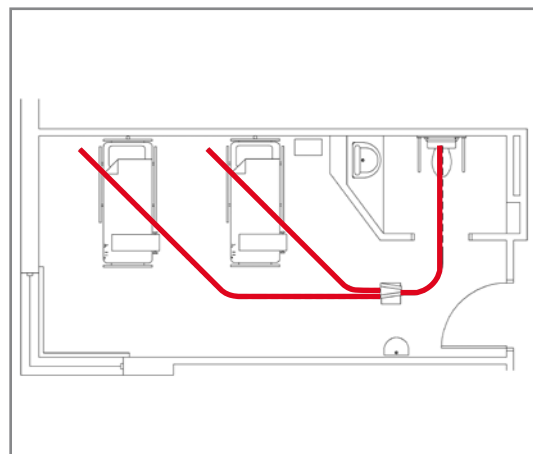
Another alternative for multiple-bed coverage is the X-Y traverse system.



An X-Y traverse system combined with a gate and single track creates a convenient and comfortable solution for bedroom coverage and toilet access.



The two fixed tracks over the beds are attached to a turntable and curved track section to provide smooth access for toileting.



Two fixed angled tracks over the beds are connected to an exchanger, which links to a curved track section for toilet access.

# CHOOSING THE RIGHT JUNCTION



Exchanger



Turntable



Gate



Charging interface

The *KWIKtrak* system provides a number of different junctions for linking together the various sections of the overall layout.

The junction options described below are powered by the lift cassette itself. This convenient solution means it is not necessary to install and provide an external power supply.

### The exchanger ...

... is a lateral switcher that allows the lift to move from one track to another.

**How it works:** move the ceiling lift to the activation station just before the exchanger and release the button on the hand control. Listen for the beep sound, and then wait while the exchanger switches to the other track. The exchanger is also fitted with an emergency button to allow manual operation.

### The turntable ...

... enables the lift to switch route in a multi-directional track system by accommodating a two, three or four-track junction. Tracks can be attached to the turntable using one of the 16 connection points.

**How it works:** move the *Maxi Sky<sup>600</sup>* to the activation station at the centre of the turntable and release the button on the hand control. Listen for a beep sound, and then wait while the turntable switches the route. If there is more than one *Maxi Sky<sup>600</sup>* in the system, there must be an activation station on every track entering the turntable in order to access it. The turntable is also fitted with an emergency button to allow manual operation.

ArjoHuntleigh can also supply a turntable operated by a pull cord. This turntable is mainly used in combination with a *Maxi Sky<sup>440</sup>* portable ceiling lift. In this case, an external power supply is required.

### The gate ...

... is used when you want to connect a fixed track to an X-Y traverse system.

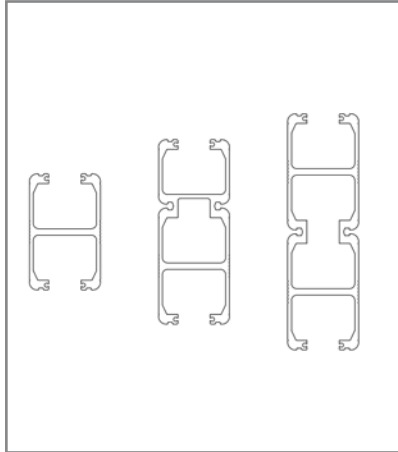
**How it works:** move the *Maxi Sky<sup>600</sup>* to the gate stopper, and then align the moving track in the X-Y system with the fixed track. When the tracks are aligned and the *Maxi Sky<sup>600</sup>* touches the gate stopper, a beep sound will indicate the imminent gate action. The moving track and fixed track will clamp together, the gate will open and the *Maxi Sky<sup>600</sup>* can go through the gate onto the fixed track.

When the *Maxi Sky<sup>600</sup>* is to return to the X-Y system, the gate will automatically unlock and secure the track stopper at its ends.

### Charging and activation stations ...

... can be clipped on at any point along the track. When using an X-Y system, the charging power is transferred by a charging interface over to the moving track.

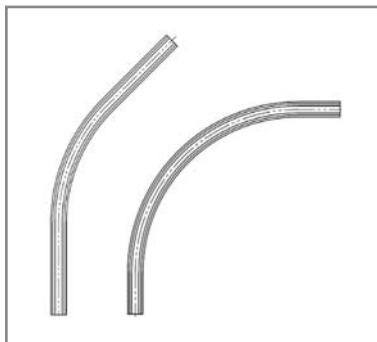
# TRACK OPTIONS



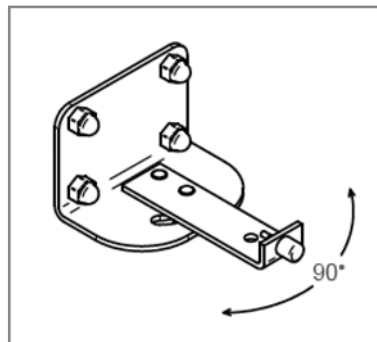
Maximum span for KWIKtrak tracks on X-Y systems and wall-to-wall installations				
		Standard span KWIKtrak 90 mm (3 1/2")	Medium span KWIKtrak 140 mm (5 1/2")	Medium span KWIKtrak 180 mm (7")
Device capacity		Maximum distance between parallel fixed tracks		
440 lbs	200 kg	2.50 M (100")	4.50 M (180")	6.00 M (240")
600 lbs	272 kg	2.15 m (84")	4.15 M (165")	5.95 M (235")
1000 lbs	455 kg	N/A	N/A	3.50 M (137")

The KWIKtrak range includes three different track profiles with heights of 90 mm (3 1/2"), 140 mm (5 1/2") or 180 mm (7").

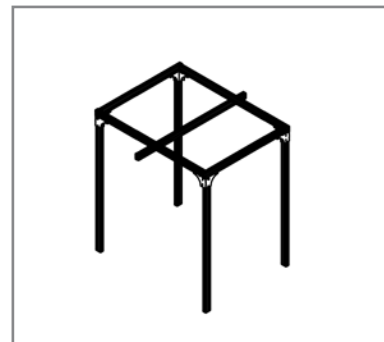
The chart above shows the maximum permitted distance between track attachment points in an X-Y system or wall-to-wall installation in accordance with Safe Working Load requirements.



The KWIKtrak 90mm track profile is available in two different curves: 45 and 90 degrees. Perfect profile symmetry means there are no curve bending deformities.



The wall bracket is adjustable through a 90 degree angle and has a built-in trolley stopper.



Semi-Permanent Rack, available for straight track or X-Y system, as shown above. **Safe Working Load:** up to 272 kg, 600 lbs.



A flush-mounted trolley is applicable when ceiling height is restricted. Available only for the Maxi Sky<sup>440</sup> portable lift.

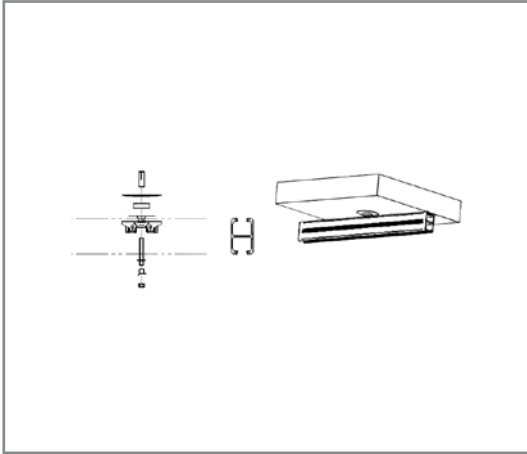


A wall post is recommended when the ceiling or walls do not have the required structural strength.

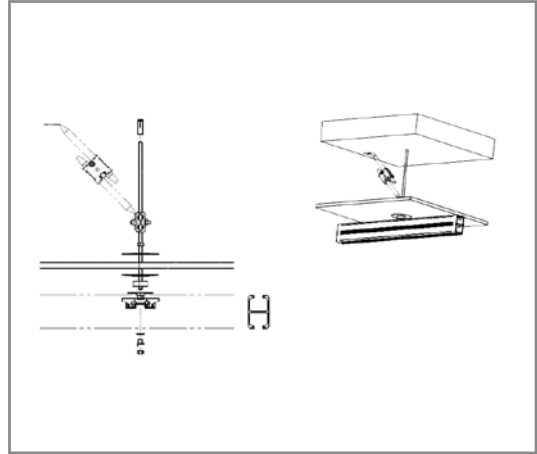


Easytrack<sup>FS</sup> is a freestanding, lightweight gantry, which is fast and easy to set up. **Safe Working Load:** 200 kg, 440 lbs.

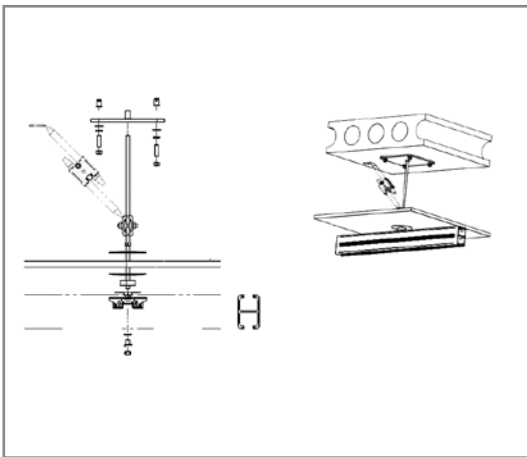
# A SELECTION OF STANDARD CEILING ATTACHMENTS



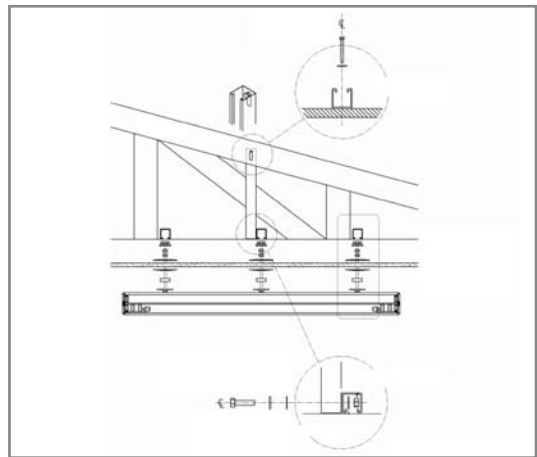
Attachment directly to concrete ceiling.



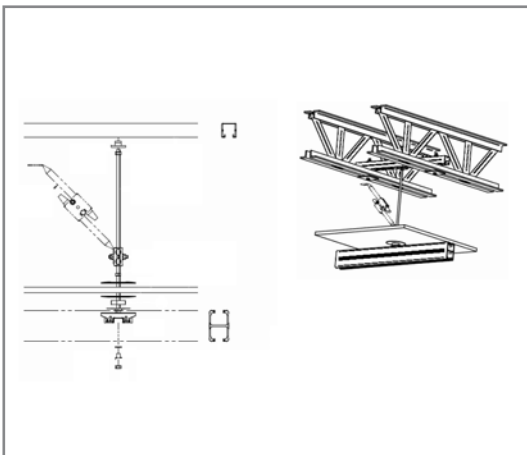
Attachment to a concrete ceiling with suspended ceiling plates, using adjustable lateral brace.



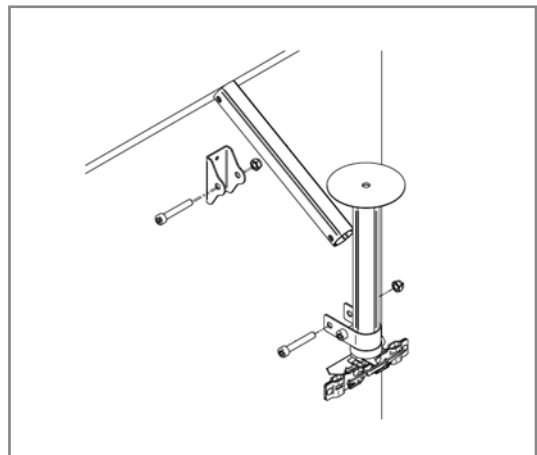
Attachment to a hollow concrete ceiling with suspended ceiling plates, using square anchor plate and adjustable lateral brace.



Attachment to wood truss joists using struts.



Attachment to steel truss joists with suspended ceiling plates using struts and adjustable lateral brace.



Attachment to sloping ceiling or walls using a cathedral bracket.

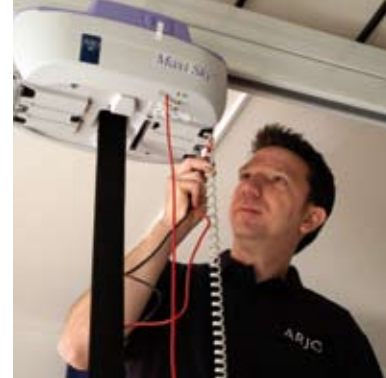
# OPTIMISED INSTALLATION PROCEDURE

It is important to conduct a room assessment at an early stage in a ceiling lift project. Verifying the room measurements, locating potential obstacles and determining the ceiling and wall structure – all these are vital factors in selecting an efficient optimum track layout.

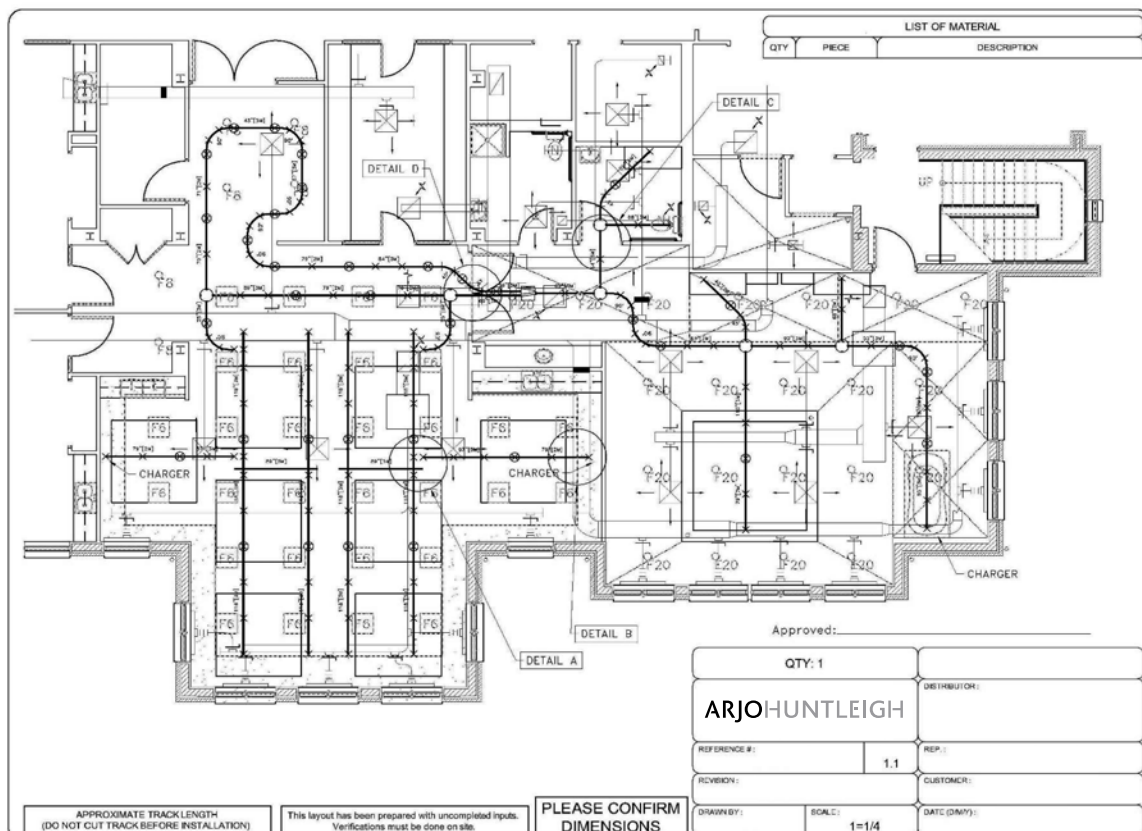
Once the optimum system has been selected, the fast and easy installation procedure is the next step in the smooth transition to day-to-day operation. ArjoHuntleigh installation technicians are highly trained specialists and experienced in dealing with every type of installation.

Due to the modular *KWIKtrak* system components, especially the patented track bracket, the ArjoHuntleigh installation procedure is very fast compared to conventional methods. This means that potential logistics problems relating to relocation of residents during the installation period are minimised. After installation is completed, the system is tested in accordance with all relevant regulations, and a certificate will be issued.

Once *Maxi Sky* is operational at your care facility, system aftercare by our service technicians will continue the high standards of speed and efficiency set by the installation procedure.



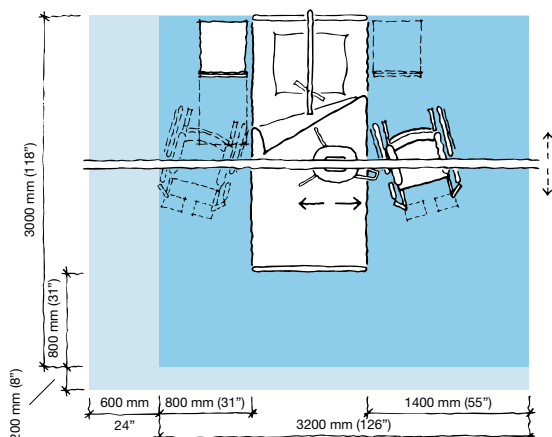
## Everything is possible!



A complete rail system in a physiotherapist training centre.

# PRODUCT SPECIFICATIONS

## Space requirement

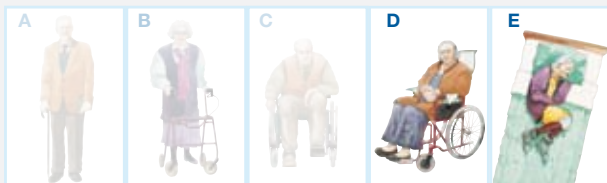


- Blue area shows the minimum working area required for the staff to be able to use the mechanical aids in an ergonomic way from one side.
- Light blue area shows required extension of working area to facilitate activities from either side to provide adequate access for the resident, mechanical aid and assisting carer.

Maxi Sky is the ArjoHuntleigh product group name for ceiling lifts which include; *Maxi Sky<sup>600</sup>*, *Maxi Sky<sup>1000</sup>* a bariatric ceiling lift and *Maxi Sky<sup>440</sup>* a portable ceiling lift.

## Mobility Gallery

Suitable for Doris and Emma.



**D Doris**, who has no capacity to support herself.

**E Emma**, who is almost completely bedridden and totally dependant.

Please contact ArjoHuntleigh for further information on the Mobility Gallery™.

## Product information

**KWIKtrak Rail profiles** Up to 455 kg (1000 lbs)

Rail profile 90 mm (3 1/2")

140 mm (5 1/2")

180 mm (7")

**Curves** SWL 272 kg (600 lbs)

Rail profile 90 mm, 45°, 575 mm (22 1/2") radius

90 mm, 90°, 575 mm (22 1/2") radius

**Track System products** SWL 272 kg (600 lbs)

Exchanger

Turntable auto

Turntable manual (portable lifts)

Gates

**X-Y trolleys** SWL 272 kg (600 lbs)

Normal

Flush

Short

**X-Y trolleys Bariatric** SWL 455 kg (1000 lbs)

**Attachment types**

Ceiling

Wall

Wall posts

Semi Permanent Rack Gantry SWL 455 kg (1000 lbs)

Semi Permanent Rack X-Y SWL 272 kg (600 lbs)

Easytrack<sup>FS</sup> SWL 200 kg (440 lbs)

Material Aluminium

Colour White

Approvals CSA No 601.1

UL No 2601-1 certifications

CE marked / ISO 10535

Only ArjoHuntleigh designed parts, which are designed specifically for the purpose, should be used on the equipment and products supplied by ArjoHuntleigh. As our policy is one of continuous development we reserve the right to modify designs and specifications without prior notice.

ArjoHuntleigh, Maxi Sky and Mobility Gallery™ are trademarks belonging to the ArjoHuntleigh group. © ArjoHuntleigh 2008.

# ARJOHUNTLEIGH ...with people in mind

Arjo International AB

PO Box 61

SE-241 21 ESLÖV

Phone: +46 413 645 00

Fax: +46 413 645 63

[www.ArjoHuntleigh.com](http://www.ArjoHuntleigh.com)

MEMBER OF THE GETINGE GROUP