

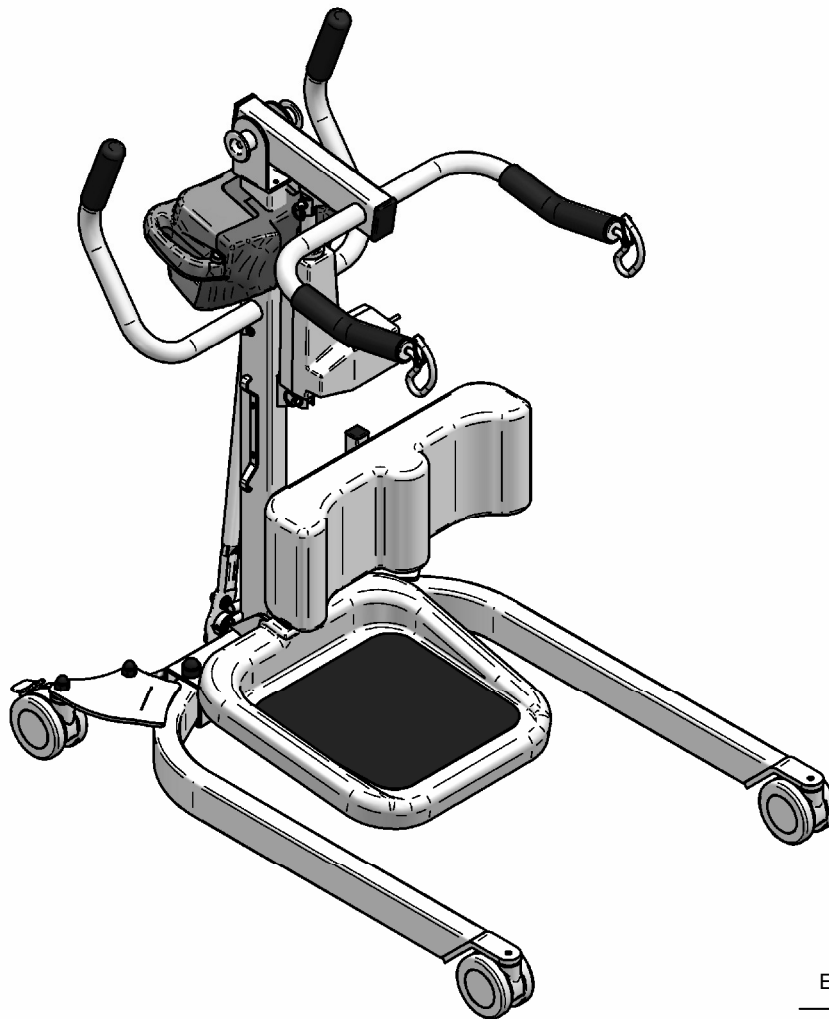
MODELS  
865XXXXX  
866XXXXX

## TECHNICAL MANUAL

**MINISTAND**

STAND-UP LIFT

MINISTAND



2001, Tanguay Street  
Magog (Quebec)  
Canada J1X 5Y5

Phone: (819) 868-0441

Toll free: 1 800-868-0441

Fax: (819) 868-2249

E-mail: [www.bhm-medical.com](http://www.bhm-medical.com)

5155 Spectrum Way, Unit 33  
Mississauga (Ontario)  
Canada L4W 5A1

14 Cross St.  
London, SW13 0PS, United Kingdom  
Tel: +44 (0)7740 717146 Fax: +44 (0)870 1619681



# TABLE OF CONTENTS

<b>SYMBOLS .....</b>	<b>4</b>
<b>TECHNICAL DATA .....</b>	<b>5</b>
<b>SAFETY INSTRUCTIONS &amp; WARNINGS .....</b>	<b>6</b>
GENERAL.....	6
SHOCK PREVENTION .....	8
FIRE AND EXPLOSION.....	8
EQUIPMENT WARNING LABELS .....	8
<b>ASSEMBLY INSTRUCTIONS .....</b>	<b>9</b>
Assembly Instructions for Ministand Lift .....	9
ADJUSTING THE WIDTH OF THE LEGS .....	13
<b>LIFT ASSEMBLY EXPLODED VIEW .....</b>	<b>14</b>
With shifter base.....	14
With pedal base.....	15
With power base.....	16
<b>LIFT PARTS LIST.....</b>	<b>17</b>
<b>SHIFTER BASE EXPLODED VIEW.....</b>	<b>18</b>
#700.20061.09 (SHIFTER BASE KIT ASSEMBLY).....	18
<b>PEDAL BASE EXPLODED VIEW.....</b>	<b>19</b>
#700.20060.09 (PEDAL BASE KIT ASSEMBLY).....	19
<b>POWER BASE EXPLODED VIEW .....</b>	<b>20</b>
#700.20062.09 (POWER BASE KIT ASSEMBLY).....	20
<b>CONTROL BOX DETAILS (with integrated charger).....</b>	<b>21</b>
<b>BATTERY PACK DETAILS .....</b>	<b>22</b>
<b>CHARGER WIRING DETAILS .....</b>	<b>23</b>
<b>BATTERY &amp; CONTROL BOX WIRING DETAILS (with integrated charger) .....</b>	<b>24</b>
<b>BATTERY MAINTENANCE &amp; SERVICE .....</b>	<b>25</b>
MAINTENANCE AND REPLACEMENT OF BATTERIES.....	25
<b>MAINTENANCE &amp; SERVICE .....</b>	<b>26</b>
MAINTENANCE AND REPLACEMENT OF BATTERIES.....	26
<b>MONTHLY INSPECTION DETAILS.....</b>	<b>28</b>
<b>DIAGRAM .....</b>	<b>29</b>
<b>LOGBOOK.....</b>	<b>30</b>
<b>WARRANTY .....</b>	<b>33</b>

COPYRIGHT 2003

**WARNING!**

All rights reserved. CONFIDENTIAL. The reproduction of this document or the transmittal in any form of any information, contained herein, without the authority in writing of an officer of the manufacturer is prohibited.

**TECHNICAL SPECIFICATIONS AND DESIGN SUBJECT TO CHANGE WITHOUT NOTICE.**

# SYMBOLS



**WARNING:** this symbol is intended to alert the user to hazards or unsafe practices which could result in serious bodily harm.



**CAUTION:** this symbol is intended to alert the user of the presence of important operating and maintenance instructions which could prevent product damage or possible personal injury.



**NOTE:** this symbol offers helpful information concerning certain operating procedures.



CONSULT ACCOMPANYING DOCUMENTS



BOOM "UP"



BOOM "DOWN"



BASE "CLOSED"



BASE "OPENED"



INDICATES CHARGING MODE



INDICATES CHARGER POWER IS "ON"



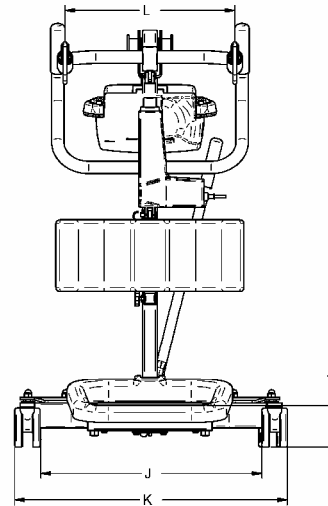
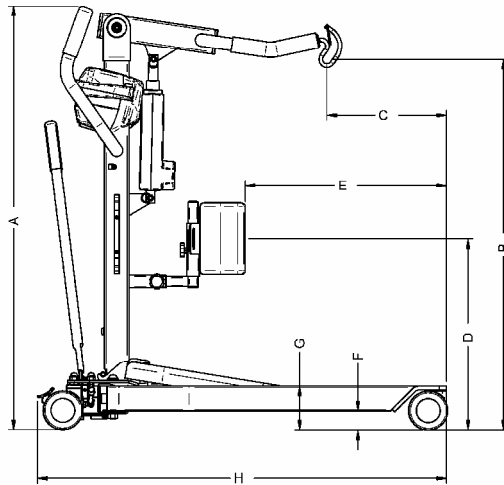
**DO NOT ATTEMPT TO USE THIS EQUIPMENT WITHOUT UNDERSTANDING THIS MANUAL.**

**To ensure safe operation, carefully read the entire manual, especially the section on "Safety Instructions and Warnings", before installing, operating or servicing this equipment.**

If anything is not completely understood, please contact your supplier for more details. Failure to comply with warnings in this manual may result in injury.

**Keep this manual with lift and refer to it as required. Contents of this manual are subjected to change without prior notice to users.**

# TECHNICAL DATA



## DIMENSIONS

Description	Hoisting height at:			
	Min		Max.	
	mm	in	mm	in
A Total lift height	1090	42.9	1580	62.2
B Hoisting height at connecting points	955	37.6	1540	60.6
C Connecting points to base end	310	12.2	625	24.6
	mm	in.		
D Knee pad to base end (Min.)	490	19.3	464.6	18.3
D Knee pad to base end (Max.)	610	24.0	24.0	0.9
E Knee pad to ground (Min.)	520	20.5	20.5	0.8
E Knee pad to ground (Max.)	610	24.0	24.0	0.9
F Base floor clearance	50	2.0	2.0	0.08
G Base height	110	4.3	4.3	0.17
H Base total length	1050	41.3	41.3	1.62
I Foot plate to ground (Low)	110	4.3	4.3	0.17
I Foot plate to ground (Hi)				
J Total internal base width (legs closed)	565	22.2	22.2	0.87
J Total internal base width (legs open)	980	38.6	38.6	1.52
K Total external base width (legs closed)	700	27.6	27.6	1.09
K Total external base width (legs open)	1100	43.3	43.3	1.70
L Connecting points distance	440	17.3	17.3	0.68
Turning radius	830	32.7	32.7	1.29
Minimum door requirement	711	28.0	28.0	1.10

## WEIGHT DATA

Description	kg	lbs
Total lift	45.5	100
Shipping	55	121
Complete base	17.7	39
Complete mast with controls & actuator	10.86	24
Complete boom	4.5	10
Foot plate	3.3	7
Knee pad	2.7	6
Batteries pack	4.5	10
Shifter arm	2	4

## TECHNICAL DATA

Description	kg	lbs
Maximum Permissible Load (Kg (lbs))	159.1	350
Maximum hoisting capability	199.1	438
IP rating control std. #700.160XX	IP21	
IP rating control opt. #700.161XX	IP24	
IP rating hand remote control	IP44	
Control voltage output (Vdc)	27.0Vdc	
Battery charger input (Vac)	90 to 240	
Battery charger output (VA max)	27	
Up & down current limiting (Amps.)	10A	
Fuse size (Amp.)	10A	
Duty Cycle 16% (#700.06553)	10min./Hr.	
Duty Cycle 10% (#E6507)	6min./Hr.	
Sound power level ( dBA )	40	

### ENVIRONMENTAL CONDITIONS:

Normal operation: 10° C to 40°C, 0% to 90% R.H., 700-1060hPa.

Equipment is not suitable for use in the presence of flammable anaesthetic mixture with air or with nitrous oxide.

Equipment classification with respect to protection from electric shock: Internally powered.

Degree of Protection against Electric Shock: Type BF.

# SAFETY INSTRUCTIONS & WARNINGS

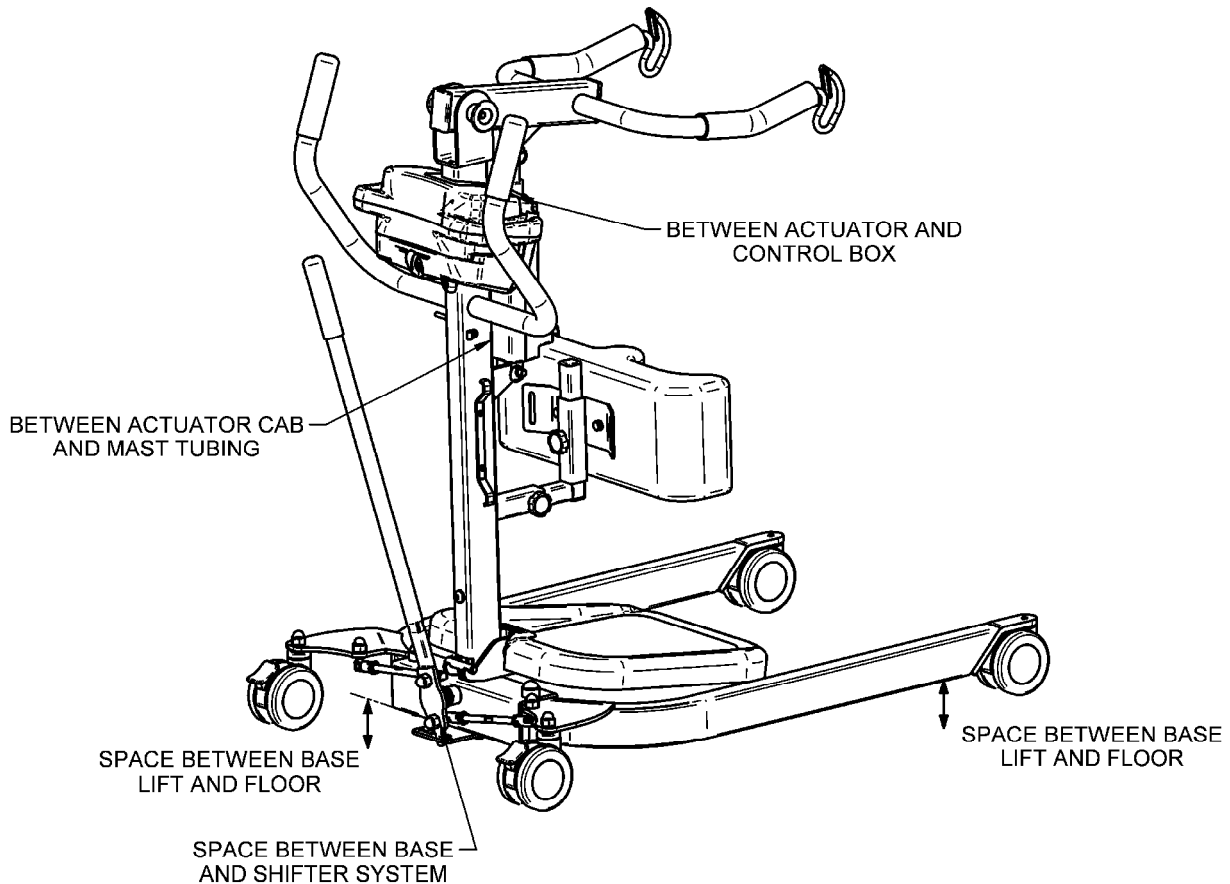
## GENERAL

- IMPORTANT – CAREFULLY READ THESE INSTRUCTIONS OR SERIOUS INJURY MAY RESULT.
- KEEP THESE INSTRUCTIONS WITH THE LIFT AT ALL TIMES.
- READ OPERATING MAINTENANCE INSTRUCTIONS IN THIS MANUAL BEFORE INSTALLING, OPERATING OR SERVICING THIS EQUIPMENT.
- YOUR LIFT is for transferring patients only. Do not use the lift for any other purpose.
- ALWAYS carry out the daily checklist before using the lift.
- BHM medical patient lifts are designed specifically for use with slings and accessories manufactured by BHM Medical. We cannot ensure the safety of a transfer, and therefore cannot be held responsible, for any incident that may occur as a result of the use of slings or accessories produced by another manufacturer. In order to ensure the safety of the patient and that of the caregiver use only products manufactured by BHM Medical with this patient lift.
- This mobile floor lift is intended to be used for patients within the specified weight limit indicated for the lift. Do not attempt to lift more than the weight limit indicated.
- BEFORE attempting to transfer, the patient must be assessed by a qualified professional.
- This mobile patient lift must be used by a caregiver with proper training to work with the patient to be transferred. This patient lift **should never be used** by a patient on their own.
- ONLY trained and qualified caregivers should transfer a patient. DO NOT attempt to use the lift if you have not been properly trained to do so.
- ALWAYS be prepared before attempting to transfer a patient.
- DO NOT use a sling that is not recommended for the lift.
- NEVER use a damaged, torn or frayed sling.
- ALWAYS place the sling around patient according to the instructions enclosed.
- FOLLOW lifting procedures outlined in this manual.
- USE all controls and safety features only according to the rules specified in this manual. Never attempt to force a control or button on the lift.
- DO NOT store the lift in a shower, bath or other area with high humidity.
- IMPORTANT: keep all components of the lift clean and dry, and have electrical and mechanical safety checkpoints done as instructed in the “Maintenance” section of this manual.
- Replace any precautionary or instruction labels that cannot be easily read.
- Do not attempt to manoeuvre the lift by pushing on the mast, motor shaft, boom or patient.
- ALWAYS manoeuvre the lift with the handles provided.
- DO NOT push a loaded lift at speeds which exceed a slow walking pace (3 km/hour or 0.8 meter/second).

## SAFETY INSTRUCTIONS & WARNINGS

- DO NOT push the lift over uneven or rough ground, particularly if loaded
- DO NOT attempt to push or pull a loaded lift over a floor obstruction which the casters are unable to ride over easily.
- DO NOT BUMP the lift down steps, loaded or unloaded.
- DO NOT park a loaded lift on any sloping surface.
- DO NOT use an electric lift in a shower
- This mobile floor lift is not intended to be a transport device or to be used to transport a patient over any long distance.
- BASE should not be opened as much as possible for optimum safety.
- DO NOT USE, in any way, the actuator as a handle to push or pull the lift. If the actuator is used as a handle, the caregiver and the patient safety is greatly compromised.
- Do not put fingers, hands or feet where space is limited (see diagram below \*). This could pinch, cut or seriously injure any parts exposed.

### \* All models



# SAFETY INSTRUCTIONS & WARNINGS

## SHOCK PREVENTION

- AVOID violent shock during transportation.
- DO NOT touch or use a lift with bare conductors or a damaged power cord. Electrically live equipment can electrocute a patient. If the lift or charger has any exposed or damaged wires, contact your local dealer immediately.
- DO NOT splash or expose electric parts of the device to water or moisture.
- CHECK nameplate for voltage and cycle requirements. These requirements differ by country. Do not attempt to use the lift in an area that has a different voltage and cycle requirements.
- READ the battery and charger instructions thoroughly before using or storing them.

## FIRE AND EXPLOSION

- Batteries may explode, leak and cause personal injury if not disposed of properly.
- Do not place or store the battery under direct sunlight or near a heat source.
- Do not dispose of in fire.
- Do not short the battery terminals.
- Do not incinerate.
- Flush with water if electrolyte (Acid) comes in contact with skin or eyes.
- Batteries must be recycled or disposed of according to local law regulations. When returning batteries, insulate their terminals with adhesive tape, etc. otherwise the residual electricity in use batteries may cause fire or explosion.



### IMPORTANT :

BATTERIES NEED TO BE CHARGED FOR A MINIMUM OF 8 HOURS PRIOR TO USING THIS LIFT FOR THE FIRST TIME.

## EQUIPMENT WARNING LABELS

- Inspect all precautionary labels on the equipment. Order and replace all labels that cannot be easily read.



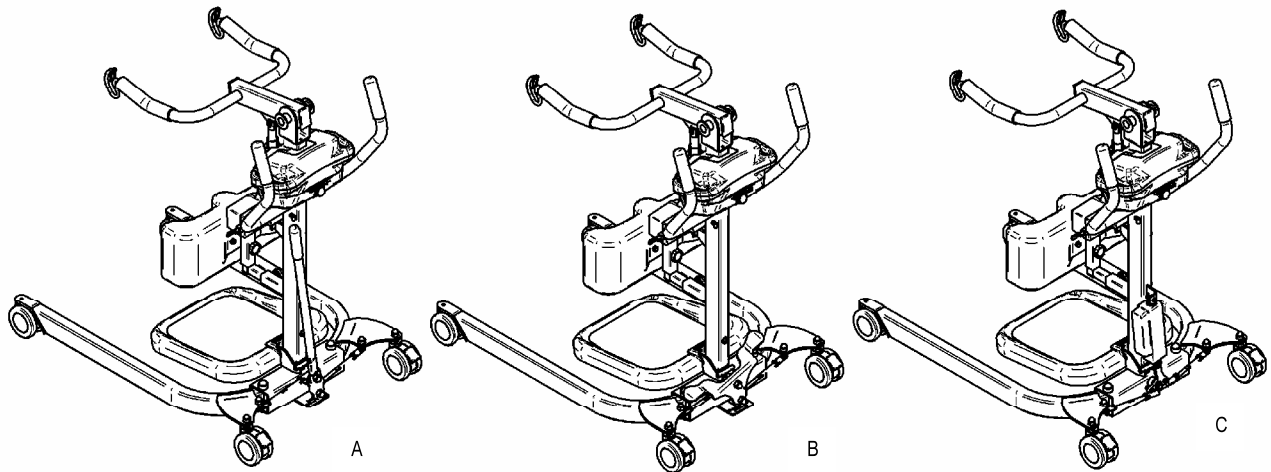
# ASSEMBLY INSTRUCTIONS

## Assembly Instructions for Ministand Lift

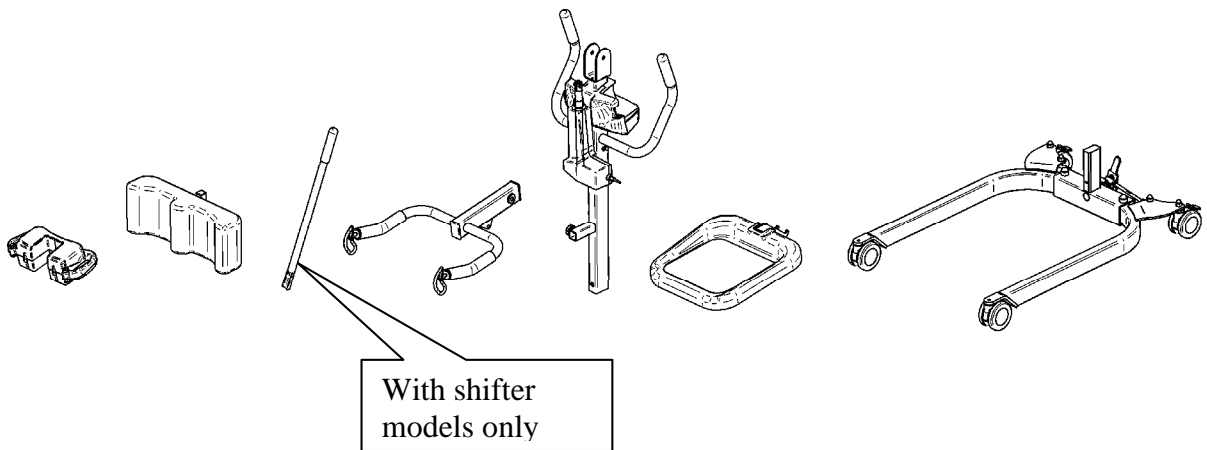
There are three different models of Ministand lift :

- With legs activated by a shifter (A).
- With legs activated by a pedal (B).
- With electrical legs (activated by the control box) (C).

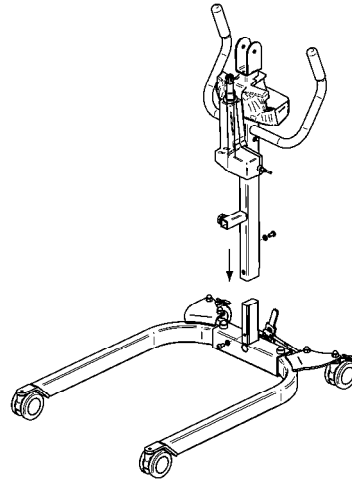
The assembly instructions remain the same for all lifts unless specified otherwise.



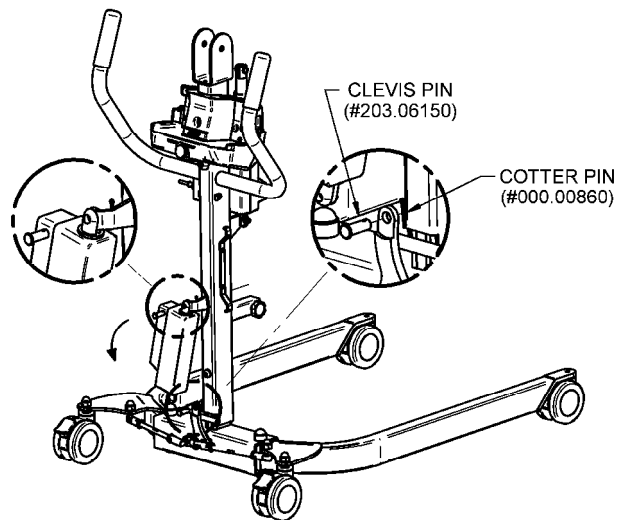
1. Remove all parts from carton and inner boxes, make sure all components are present (see checklist on the main box sticker). Check for any shipping damage. Do not discard carton or packing material until you are completely satisfied there is no damage to the lift.



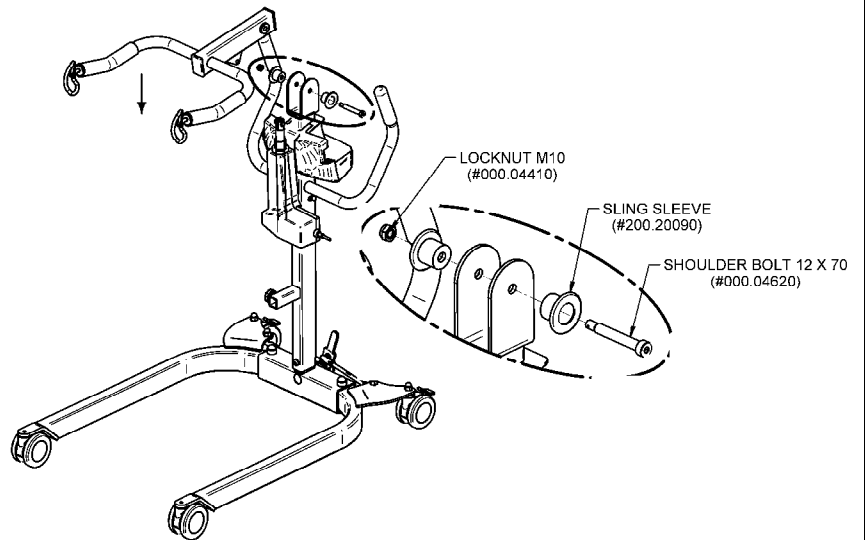
2. Remove the securing bolts on the base mast post. Slide mast over the post and secure with the two bolts and lock washers.



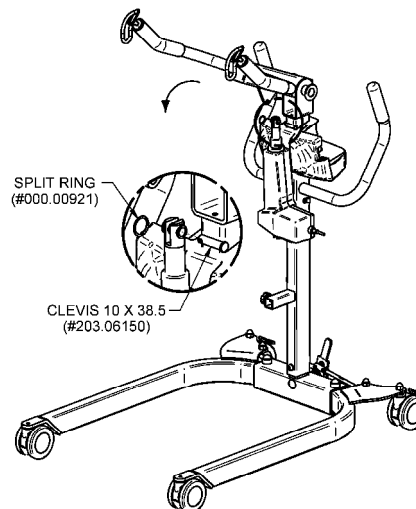
3. **For power base shifter only:** Unpack the actuator from the mast prior to fixing it to the floor lift. Actuator wire must be oriented upward and its label must be visible. Make sure to fix both ends properly to the mast bracket and the power base shifter. Both cotter pins must be properly installed and secured.



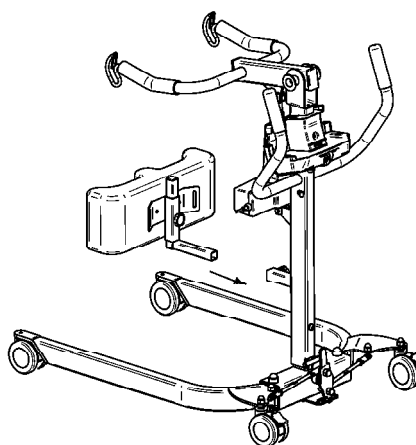
4. Install boom assembly into position at the top of the mast and secure it with the shoulder bolt, the two sling sleeves and lock nut. Tighten securely.



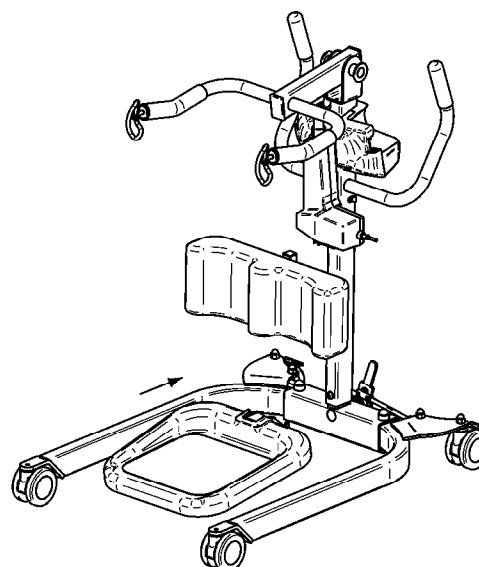
5. Install the top extremity of the actuator and fix it to the boom bracket with the clevis pin assembly.



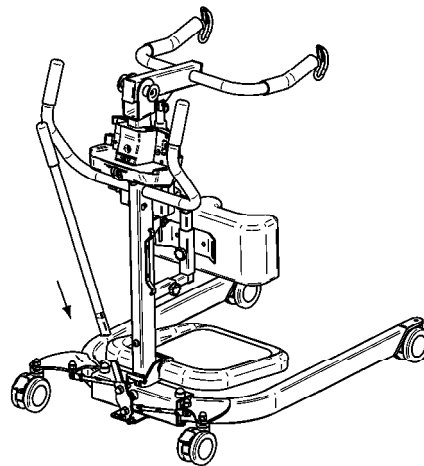
6. Insert the knee support union into the mast bracket and adjust with the knob place below the bracket. Insert the knee pad on the knee support union and adjust for proper height with the knob placed behind the knee pad.



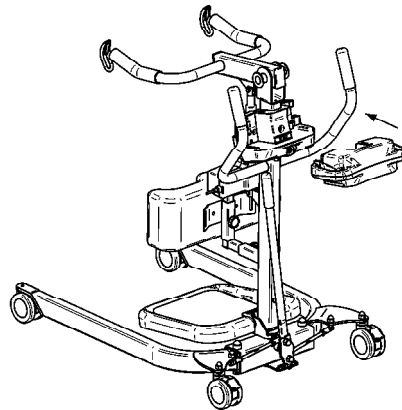
7. Clip the footplate on the base.



8. Insert the shifter arm onto the shifter plate assembly (for models with shifter arm only).



9. Place batteries into the control box.



## ADJUSTING THE WIDTH OF THE LEGS

The base of the lift can be set with the legs opened or closed. Adjustments of the base varied according to the model:

- **Shifter base:** The adjustments are made by changing the position of the shifter: Disengage the shifter plate by pulling the shifter arm then push it to the left will close the legs. Pushing the shifter arm to the right will open the legs (Fig.1).
- **Pedal base :** The adjustments are made by changing the position of the pedal. Press down the left side of the pedal will close the legs. Press down the right side of the pedal will open the legs (Fig. 2).
- **Power base :** The adjustments are made by using the control buttons OPEN and CLOSE on the control box or on the hand control (Fig. 3).

Since the residents centre of gravity is positioned over the centre of the chassis, in most situations the resident can be comfortably transported with the base closed. Keeping the resident at the lowest point within the base, lowers the centre of gravity, increasing resident security. The residents lateral movement is also reduced by the design of the arms.

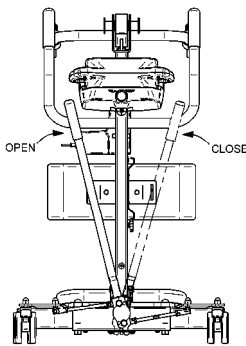


Fig.1

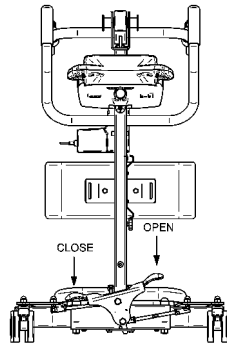


Fig. 2

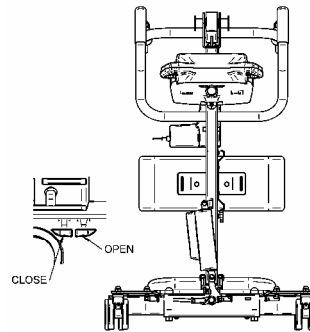


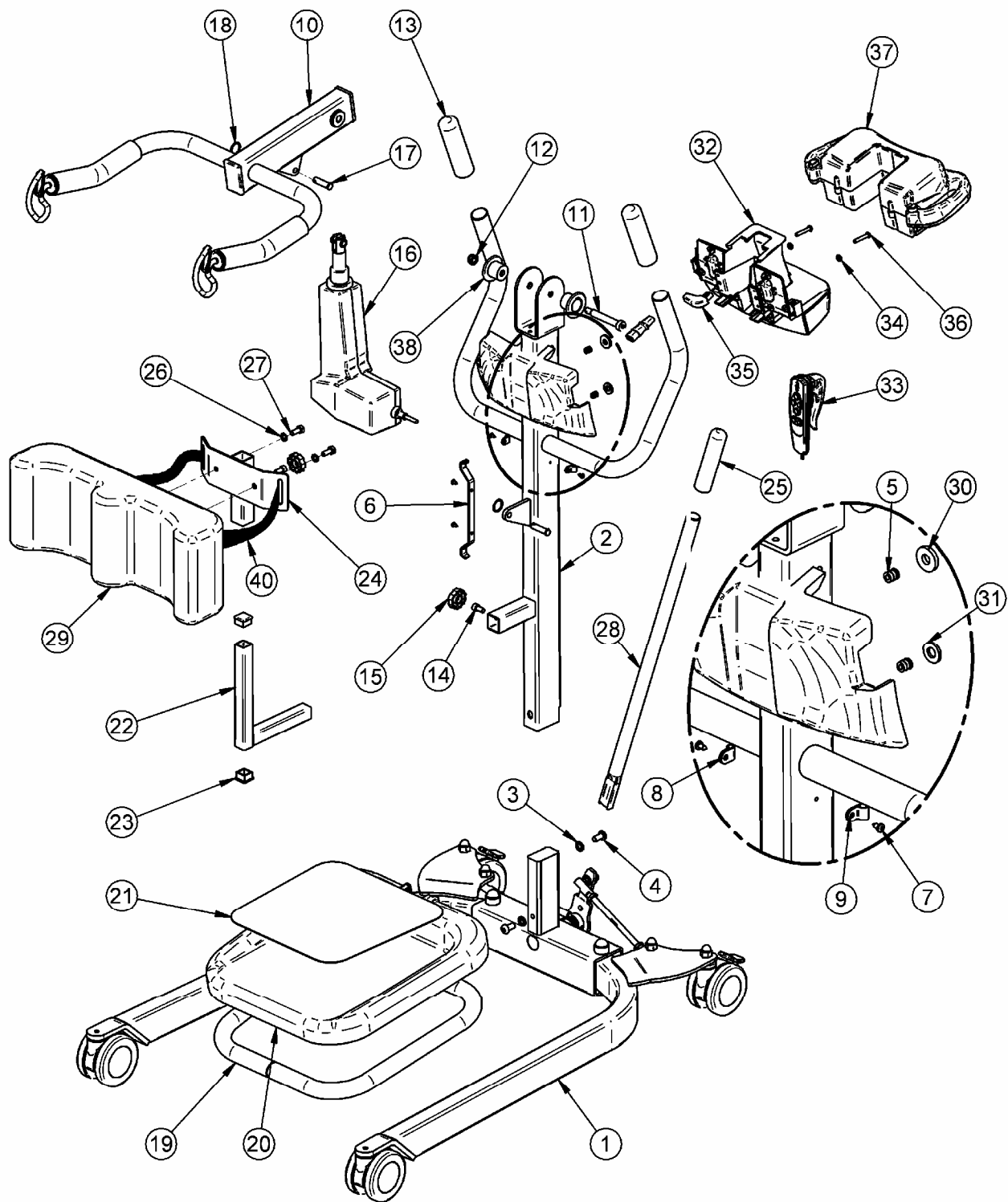
Fig. 3



The position of the legs of the mobile floor lift must be fully set in either the opened or closed position. Do not position the legs between these two points.

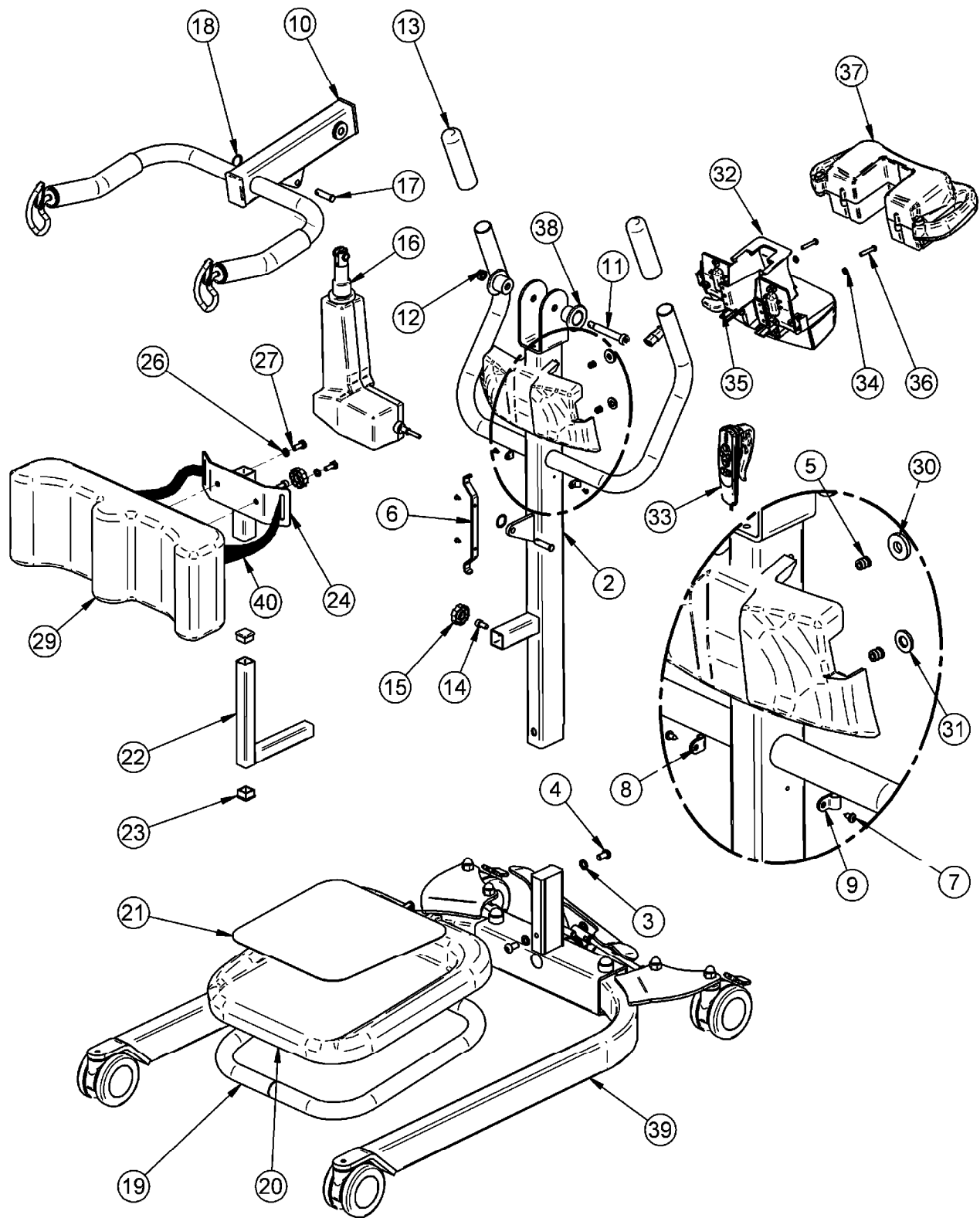
# LIFT ASSEMBLY EXPLODED VIEW

*With shifter base*



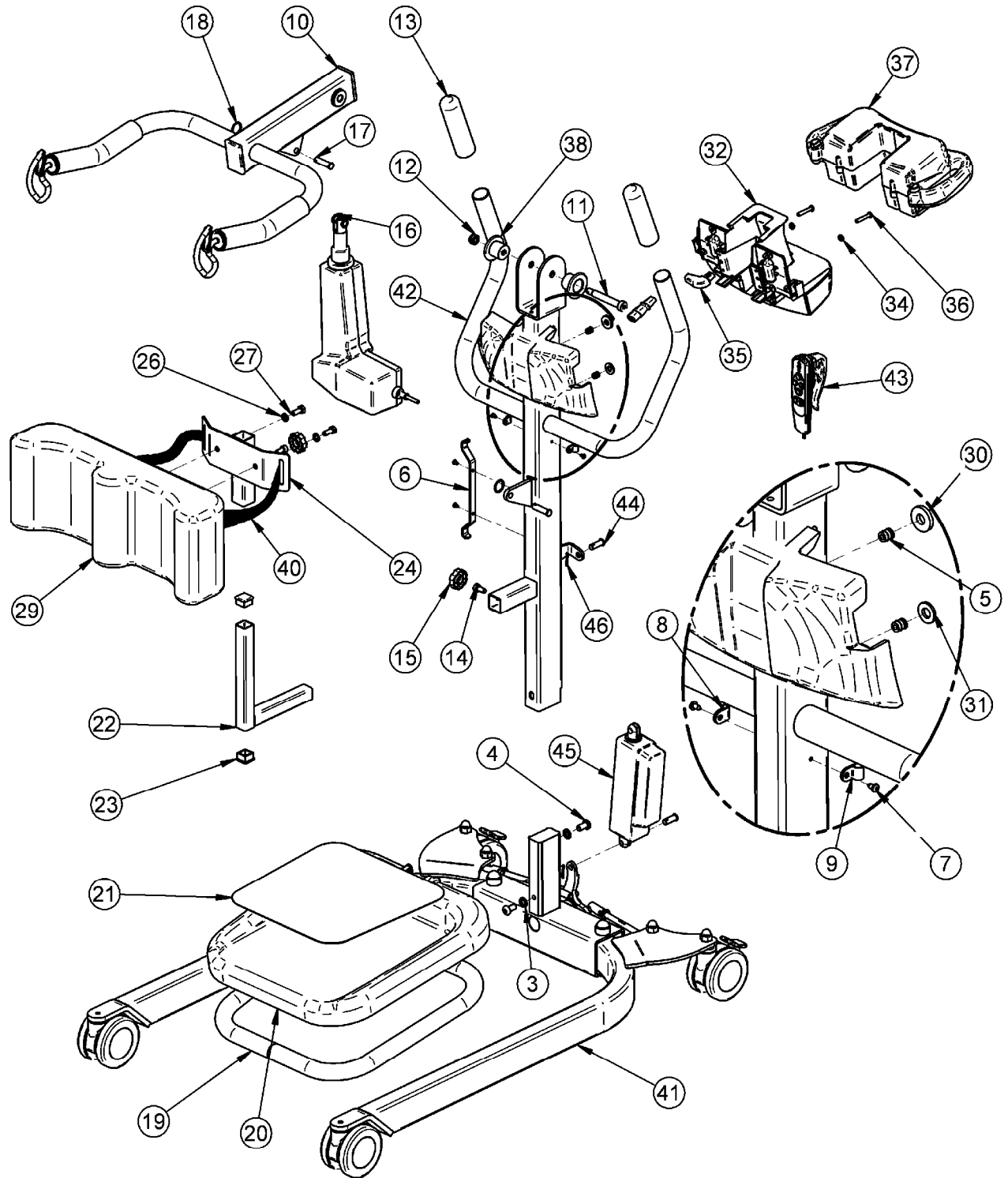
# LIFT ASSEMBLY EXPLODED VIEW

*With pedal base*



# LIFT ASSEMBLY EXPLODED VIEW

*With power base*





# LIFT PARTS LIST

Item Number	Document Number	Title	Qty
1	700.20061.09	SHIFTER BASE KIT ASSY	1
2	2XX.20018***	MAST ASSY	1
3	000.04425	LOCKWASHER M10 ZINC	2
4	000.04080	SCREW M10 X 20 BUTTON ZINC	2
5	000.03405	NUT INSERT AT M6 X 1.0	2
6**	2XX.20800***	POWER CORD BRACKET	1
7	000.00635	TAP SCREW ST4.2 X 9.5 TORX	4
8	E0295	CABLE CLAMP 3/16"	1
9	E0296	CABLE CLAMP 5/16"	1
10	700.20001	BOOM KIT ASSY	1
11	000.04620	SHOULDER 12 X 70 (M10)	1
12	000.04410	LOCKNUT M10 ZINC	1
13	000.04700	FOAM HANDLE 1 1/4"	2
14	000.03596	SCREW M8 X 16 SOCKET ZINC	2
15	000.03970	KNOB M8	2
16	700.06553	BHM ACTUATOR	1
16	E6507	LINAK ACTUATOR	1
17	203.06150	CLEVIS ø10 X 38.5	2
18	000.00921	SPLIT RING	2
19	2XX.20026***	FOOTREST FRAME	1
20	200.20030	FOOTREST	1
21	200.20100	NON-SKID CARPET	1
22	2XX.20760***	KNEEPAD SUPPORT UNION	1
23	000.20180	TUBE INSERT 1" X 1"	2
24	2XX.20051***	KNEEPAD BRACKET ASSY	1
25	M0134	RUBBER HANDLE 1"	1
26	000.03960	LOCKWASHER M8 ZINC	2
27	000.03635	SCREW M8 X 20 HEX ZINC	2
28	2XX.20046***	ARM SHIFTER	1
29	200.06565	KNEEPAD	1
30	000.20070	FLAT WASHER M10 X 4TH. ZINC	1
31	000.04450	FLAT WASHER NYLON 10 X 2.5TH.	1
32	SEE PAGE 21	CONTROL BOX ASSY	1
33	700.13610	4 BUTTONS HANDSET	1
34	000.03420	LOCKWASHER M6 ZINC	2
35*	402.00027	CTRL BOX CLASS 2 SPT CORDSET 90	1
36	000.03140	SCREW M6 X 35 BUTTON ZINC	2
37	700.16200	BATTERY PACK ASSY	1
38	200.20090	SLEEVE	2
39	700.20060.09	PEDAL BASE KIT ASSY	1
40	361.20000	KNEEPAD STRAP	1
41	700.20062.09	POWER BASE KIT ASSY	1
42	2XX.20019***	POWER BASE MAST ASSY	1
43	700.13630	4 BUTTONS HANDSET	1
44	000.04150	CLEVIS ø10 X 28	2
45	E0065	LA-12-70 ACTUATOR	1
46	000.00860	COTTER PIN 3/32" X 3/4"	2

( ) Variable quantity

\*Only required with a control box with integrated charger, except those with UL cord.

\*\*Only required with a control box with integrated charger.

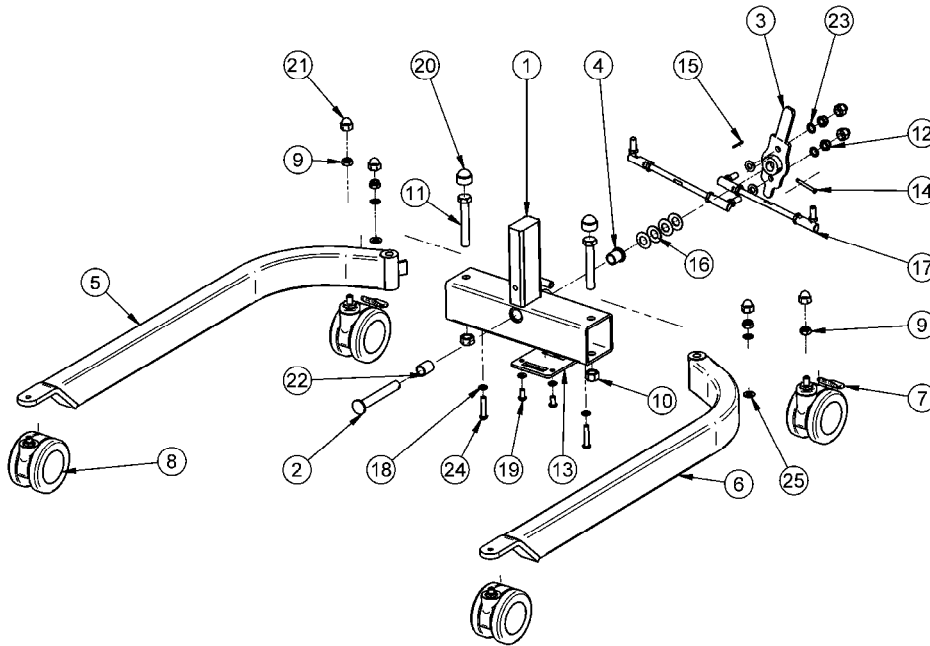
\*\*\*If the parts are blue, replace the part number 2XX by 228

If parts are beige, replace the part number 2XX by 222

If the parts are grey, replace the part number 2XX by 232

If the parts are blue mercury, replace the part number 2XX by 227

# SHIFTER BASE EXPLODED VIEW

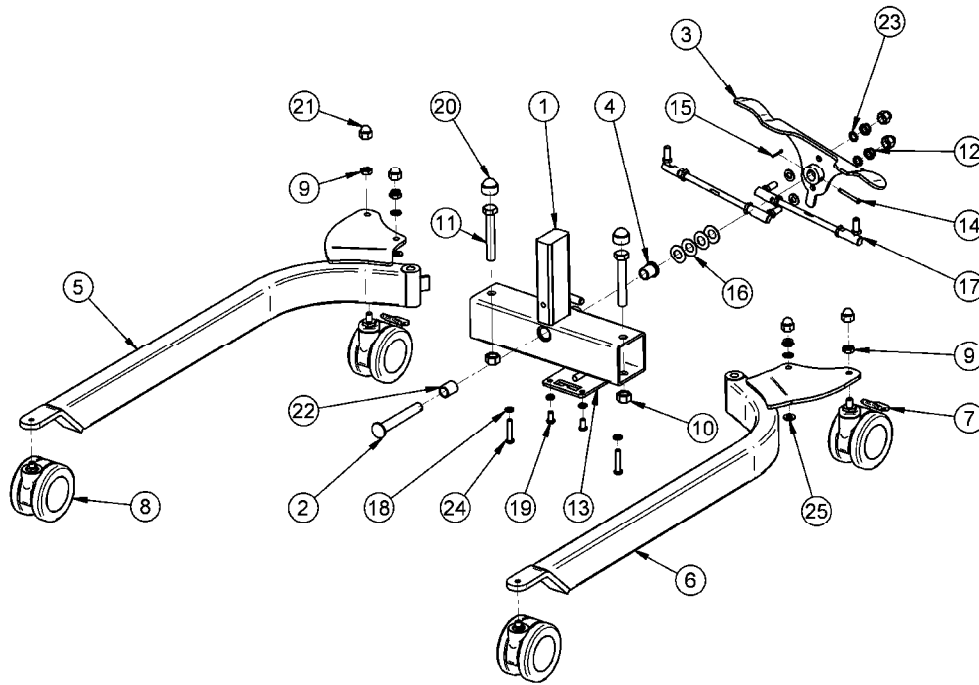


## #700.20061.09 (SHIFTER BASE KIT ASSEMBLY)

Item #	Document #	Title	Qty.
1	2XX.20060*	BASE FRAME	1
2	2XX.23114*	BASE PIVOT SHAFT	1
3	2XX.23131*	SHIFTER	1
4	000.05460	FLANGE BUSHING 5/8"ID X 13/16"OD	1
5	2XX.20006*	RIGHT LEG	1
6	2XX.20011*	LEFT LEG	1
7	000.20110	4" SWIVEL WHEEL WITH BRAKE	2
8	000.20100	4" SWIVEL WHEEL	2
9	000.04411	LOCKNUT FUJILOK M10 ZINC	2
10	000.05010	LOCKNUT STOVER M14 ZINC	2
11	000.05000	SCREW M14 X 90 HEX ZINC	2
12	000.04410	LOCKNUT M10 ZINC	4
13	2XX.20095*	BASE SHIFTER PLATE	1
14	000.00898	CLEVIS 3/16" X 1 5/8"	1
15	000.00860	COTTER PIN 3/32" X 3/4"	1
16	000.04920	SPRING WASHER 1 1/4"OD X 0.63"ID	4
17	001.20130	TIE ROD END KIT (L-R)	2
18	000.03960	LOCKWASHER M8 ZINC	4
19	000.03613	SCREW M8 X 16 BUTTON ZINC	2
20	000.05015	BLACK PLASTIC CAP M14	2
21	000.04422	BLACK PLASTIC CAP M10	6
22	000.05462	BUSHING 5/8"ID X 13/16"OD	1
23	000.04426	STARWASHER M10 ZINC	4
24	000.03690	SCREW M8 X 40 BUTTON ZINC	2
25	000.04430	FLAT WASHER M10 ZINC	4

\*If the parts are blue, replace the part number 2XX by 228  
 If the parts are beige, replace the part number 2XX by 222  
 If the parts are grey, replace the part number 2XX by 232  
 If the parts are blue mercury, replace the part number 2XX by 227

# PEDAL BASE EXPLODED VIEW



## #700.20060.09 (PEDAL BASE KIT ASSEMBLY)

Item Number	Document Number	Title	Qty.
1	2XX.20060*	BASE FRAME	1
2	2XX.23114*	BASE PIVOT SHAFT	1
3	2XX.23132*	PEDAL	1
4	000.05460	FLANGE BUSHING 5/8"ID X 13/16"OD	1
5	2XX.20006*	RIGHT LEG	1
6	2XX.20011*	LEFT LEG	1
7	000.20110	4" SWIVEL WHEEL WITH BRAKE	2
8	000.20100	4" SWIVEL WHEEL	2
9	000.04411	LOCKNUT FUJILOK M10 ZINC	2
10	000.05010	LOCKNUT STOVER M14 ZINC	2
11	000.05000	SCREW M14 X 90 HEX ZINC	2
12	000.04410	LOCKNUT M10 ZINC	4
13	2XX.20095*	BASE SHIFTER PLATE	1
14	000.00898	CLEVIS 3/16" X 1 5/8"	1
15	000.00860	COTTER PIN 3/32" X 3/4"	1
16	000.04920	SPRING WASHER 1 1/4"OD X 0.63"ID	4
17	001.20130	TIE ROD END KIT (L-R)	2
18	000.03960	LOCKWASHER M8 ZINC	4
19	000.03613	SCREW M8 X 16 BUTTON ZINC	2
20	000.05015	BLACK PLASTIC CAP M14	2
21	000.04422	BLACK PLASTIC CAP M10	6
22	000.05462	BUSHING 5/8"ID X 13/16"OD	1
23	000.04426	STARWASHER M10 ZINC	4
24	000.03690	SCREW M8 X 40 BUTTON ZINC	2
25	000.04430	FLAT WASHER M10 ZINC	4

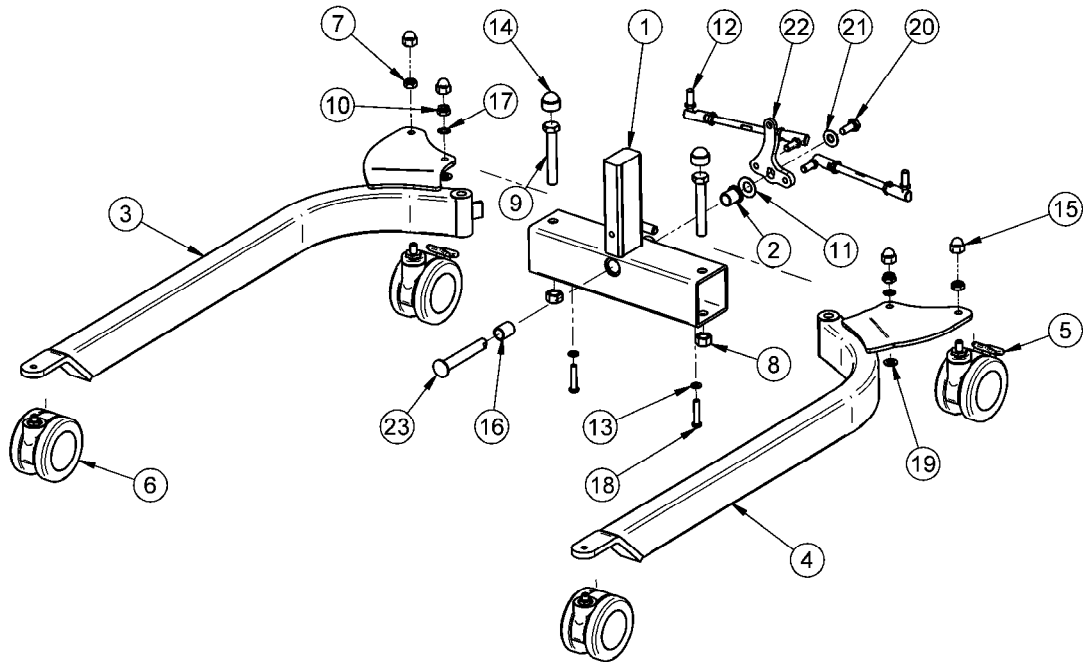
\*If the parts are blue, replace the part number 2XX by 228

If the parts are beige, replace the part number 2XX by 222

If the parts are grey, replace the part number 2XX by 232

If the parts are blue mercury, replace the part number 2XX by 227

## POWER BASE EXPLODED VIEW

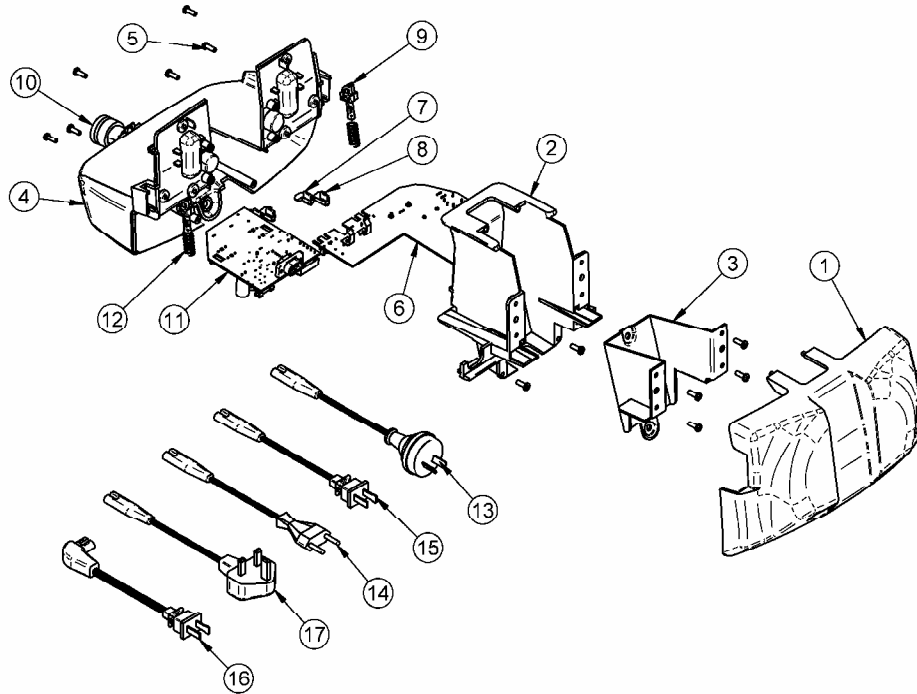


### #700.20062.09 (POWER BASE KIT ASSEMBLY)

Item #	Document #	Title	Qty.
1	2XX.20060	BASE FRAME	1
2	000.05460	FLANGE BUSHING 5/8"ID X 13/16"OD	1
3	2XX.20006	RIGHT LEG	1
4	2XX.20011	LEFT LEG	1
5	000.20110	4" SWIVEL WHEEL WITH BRAKE	2
6	000.20100	4" SWIVEL WHEEL	2
7	000.04411	LOCKNUT FUJILOK M10 ZINC	2
8	000.05010	LOCKNUT STOVER M14 ZINC	2
9	000.05000	SCREW M14 X 90 HEX ZINC	2
10	000.04410	LOCKNUT M10 ZINC	2
11	000.04920	SPRING WASHER 1 1/4"OD X 0.63"ID	1
12	001.20130	TIE ROD END KIT (L-R)	2
13	000.03960	LOCKWASHER M8 ZINC	2
14	000.05015	BLACK PLASTIC CAP M14	2
15	000.04422	BLACK PLASTIC CAP M10	4
16	000.05462	BUSHING 5/8"ID X 13/16"OD	1
17	000.04426	STARWASHER M10 ZINC	2
18	000.03690	SCREW M8 X 40 BUTTON ZINC	2
19	000.04430	FLAT WASHER M10 ZINC	2
20	000.04090	SCREW M10 X 25 HEX ZINC	1
21	000.04428	STAR WASHER M10 INT.	1
22	2XX.23134	SHIFTER PLATE FOR POWER BASE	1
23	2XX.23136	POWER BASE PIVOT SHAFT	1

\*If the parts are blue, replace the part number 2XX by 228  
 If the parts are beige, replace the part number 2XX by 222  
 If the parts are grey, replace the part number 2XX by 232  
 If the parts are blue mercury, replace the part number 2XX by 227

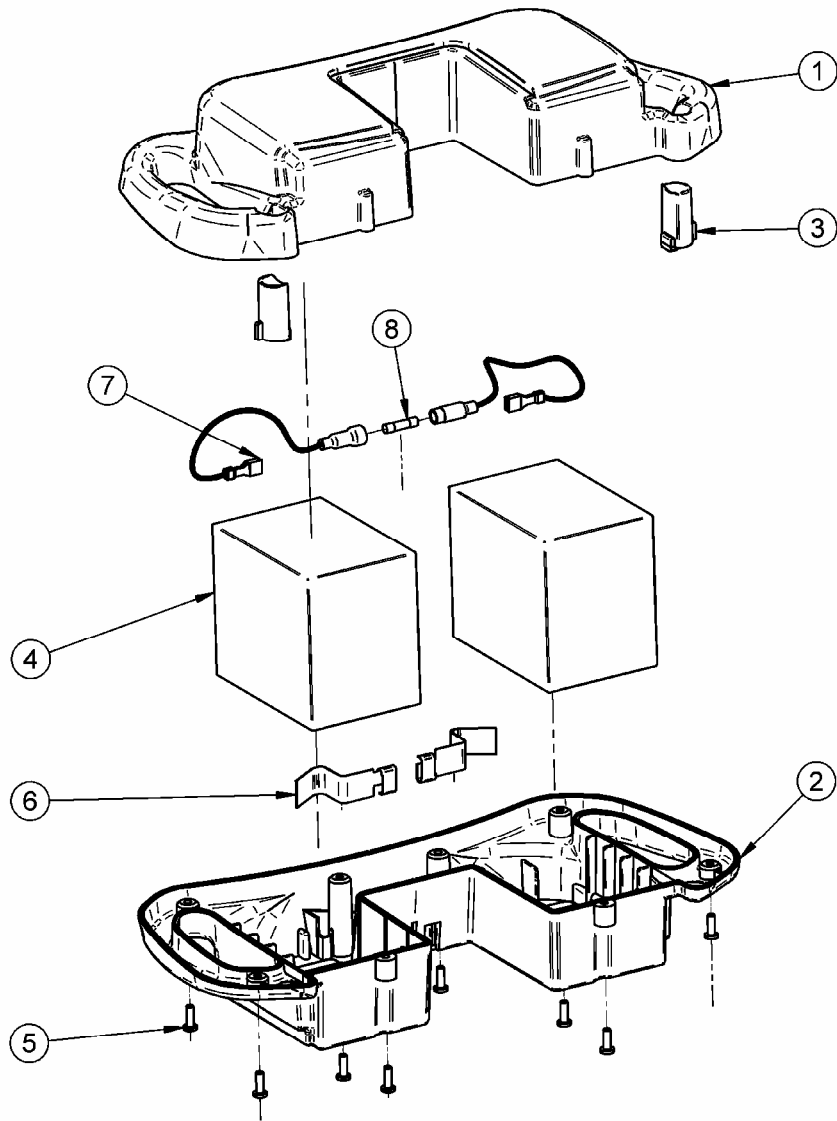
## CONTROL BOX DETAILS (with integrated charger)



#700.16020.2 (CTRL BOX) #700.16015.2 (CTRL BOX FOR POWER BASE) #700.16005.2 (CTRL BOX WITH INTEGRATED CHARGER) #700.16000.2 (CTRL BOX WITH INTEGRATED CHARGER FOR POWER BASE)			#700.16020.2	#700.16015.2	#700.16005.2	#700.16000.2
Item Number	Part Number	Title	Qty			
1	250.16050	CUT CTRL BOX BACK	1	1	1	1
2	250.16100	CUT CONTROL BOX MIDDLE	1	1	1	1
3	200.16260	CONTROL BOX STEEL BRACKET	1	1	1	1
4	200.16000	CONTROL BOX FRONT "ABCDE"	-	-	-	1
4	200.16005	CONTROL BOX FRONT "ABDE"	-	-	1	-
4	200.16015	CONTROL BOX FRONT "BCDE"	-	1	-	-
4	200.16020	CONTROL BOX FRONT "BDE"	1	-	-	-
5	000.02480	TAP SCREW PLASTITE 4.0 X 12	12	12	12	12
6	492.00045-3	CTRL BOX CIRCUIT (CAL. 11A)	1	1	1	1
7	200.16240	CONTROL BOX RIGHT BUTTON	1	2	1	2
8	200.16230	CONTROL BOX LEFT BUTTON	1	2	1	2
9	200.16250	CONTROL BOX LATCH	2	2	2	2
10	C6P22MM	PUSH BUTTON	1	1	1	1
11	492.00031-4	CTRL BOX CHARGER CIRCUIT	-	-	1	1
12	000.00881	COMPRESSION SPRING	2	2	2	2

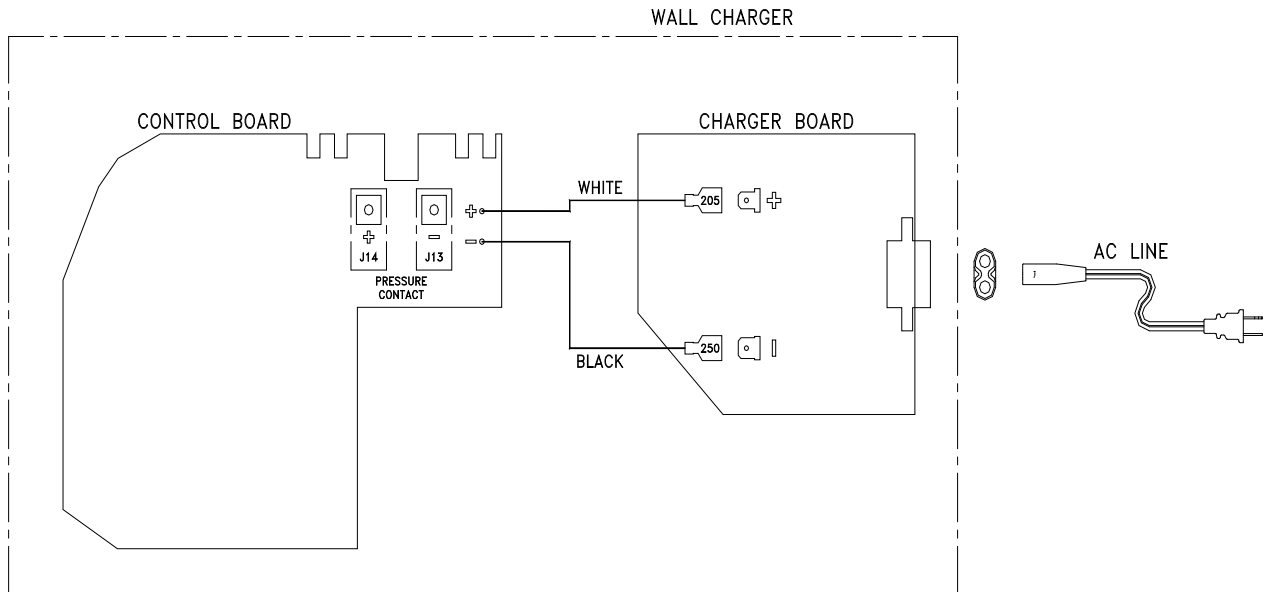
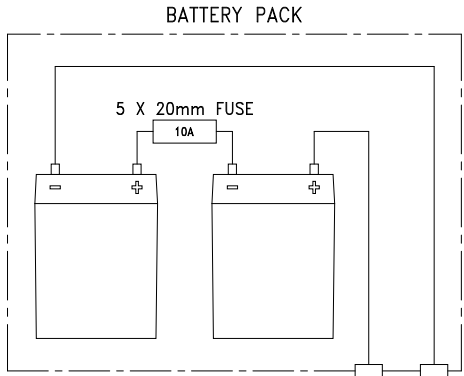
POWER CORD FOR CTRL BOX WITH INTERGRATED CHARGER (DEPENDING OF THE COUNTRY)			
Item Number	Part Number	Title	Qty
13	402.00004	CLASS 2 AUSTRALIA SPT CORDSET	1
14	402.00003	CLASS 2 CE SPT CORDSET	1
15	402.00002	CLASS 2 JAPAN SPT CORDSET	1
16	402.00013	CLASS 2 UL SJT CORDSET 90	1
17	402.00005	CLASS 2 UK SPT CORDSET	1

# BATTERY PACK DETAILS

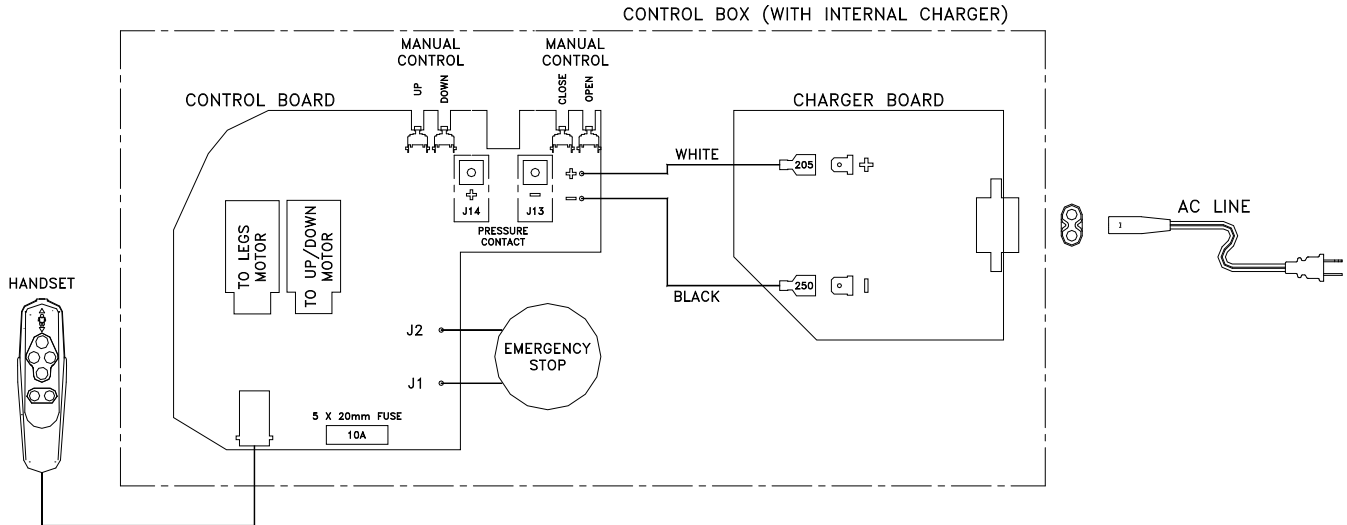
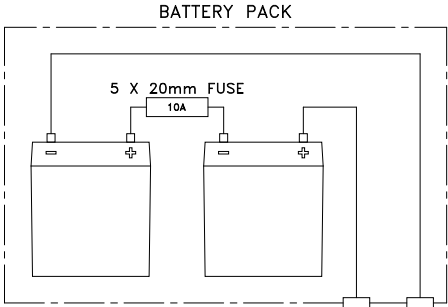


Item Number	Catalog Number	Description	Qty
1	200.16200	BATTERY PACK TOP	1
2	200.16210	BATTERY PACK BOTTOM	1
3	200.16220	BATT PACK RELEASE BUTTON	2
4	403.10500	BATTERY 12V 5Ah	2
5	200.16270	CONTACT BATTERY PACK	2
6	402.00033	WIRE JUMPER BATTERY PACK	2
7	000.02480	TAP SCREW PLASTITE 4.0 X 12	8
8	C8FGMA10	FUSE GMA 10 A	1

# CHARGER WIRING DETAILS



# BATTERY & CONTROL BOX WIRING DETAILS (with integrated charger)





# BATTERY MAINTENANCE & SERVICE

## MAINTENANCE AND REPLACEMENT OF BATTERIES

### **Battery Systems:**

The Ministand uses sealed lead-acid batteries mounted within the control box. Unlike nickel-cadmium batteries, lead-acid batteries are not subject to a memory effect. Therefore they should not be completely drained before recharging. The control box is equipped with an automatic control shut off after 20 seconds of inactivity to prevent any battery drainage while the lift is in the stand-by mode. Power to the lift is reactivated by pushing any handset button.

- **Do not drop the battery. A dropped battery may have been internally damaged and left unable to hold a charge. The green LED on the charger may not accurately reflect the charge condition of a damaged battery.**
- **Never attempt to use a battery that appears to be damaged or dented.**
- **Do not store the battery near a heat source.**
- **Always keep the metal battery contacts clean.**

### **Maintenance:**

- For optimum battery lifetime, the control box/battery pack must be connected to the main voltage as often as possible.
- The batteries must be charged at least every 6 months.
- The batteries should be replaced at least every 4 years. The pattern of use, frequent and high-powered discharges will reduce the battery life.
- The battery pack and control box should have a full function test at least once a year.

# MAINTENANCE & SERVICE

## MAINTENANCE AND REPLACEMENT OF BATTERIES

To remove the battery pack from the control box push the 2 latch buttons located on each side of the control box at the same time and pull straight out toward you. The battery pack shell is formed of 2 pieces. Remove the 8 screws and with the latch buttons facing up, lift off the top shell. (Fig. A)

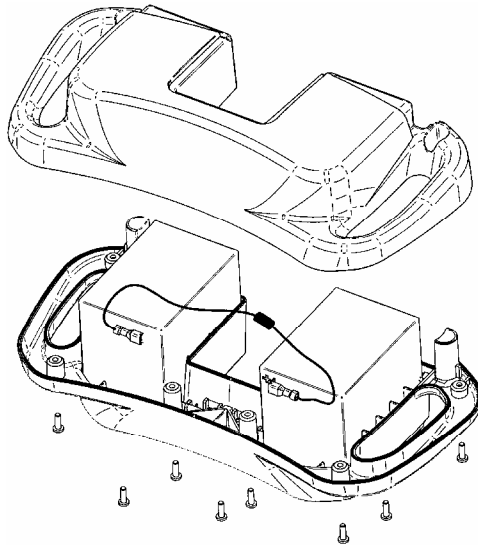


Fig. A

Lift out the 2 batteries and remove the fused jumper from the connectors. (Fig B & C)



**Warning: Make sure to not short batteries.**

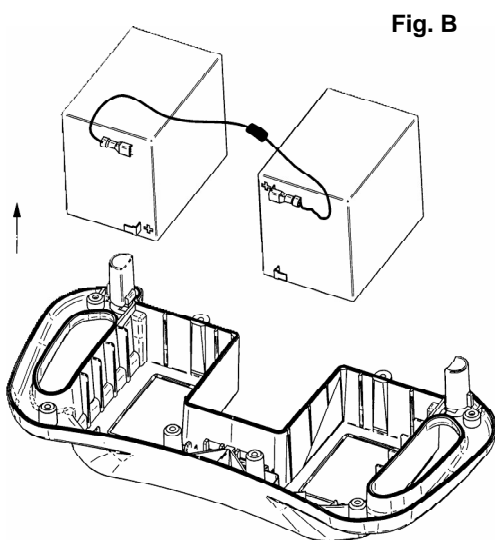


Fig. B

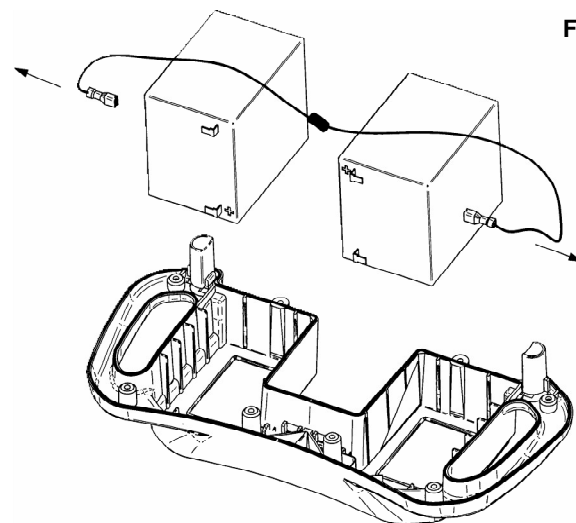


Fig. C

Check the following:

- Is the fuse OK? If not, replace it with an identical 10 amp fuse. Part # C8FGMA10.
- Are the wire and battery connectors free from corrosion?
- Is the cable damaged, if so, replace it with new part (see exploded view).
- Is there any damage or evidence of abuse to the battery pack casing? A complete battery pack assembly can be ordered (See exploded view).

To reassemble the battery pack:

- Insert the batteries into the bottom shell with the battery terminal end first. Make sure there is a solid contact between the terminals and the packs steel connector.
- With both batteries completely seat in the bottom casing, install the fused jumper between each top terminal.
- Replace the top shell and reinstall the 8 screws.

## MONTHLY INSPECTION DETAILS

*Refer to diagram on the following page for the location of each inspection area.*

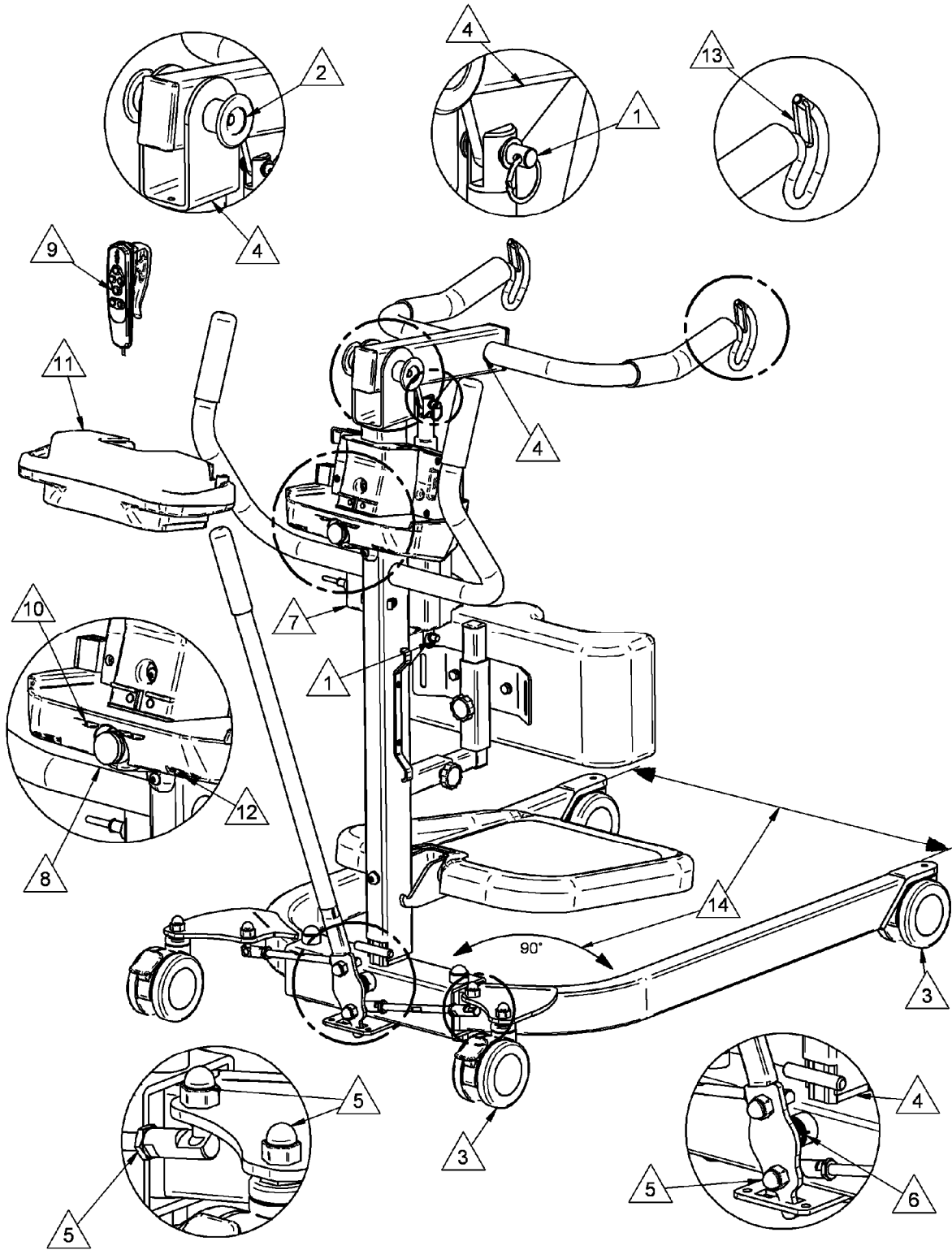
These procedures are supplied as a guideline for personnel who are responsible for the maintenance and safety inspections of patient handling devices. The manufacturer accepts no responsibility for ongoing inspections and checks. These are guidelines only and are not intended as a substitute for a regular, thorough equipment maintenance program.

**Note :** if during your inspection any bolt, nut or structural fastener is removed, it is imperative that you reinstall all associated safety devices such as cotter pins, split rings and lock nuts. If one of these devices is defective, you must replace it with an original new component.

***For all models (with shifter, with pedal and power base)***

ITEM #	PROCEDURE	√
1	ENSURE THE PIVOT CLEVIS PIN IS WELL SECURED BY THE SPLIT RING AT BOTH END OF THE ACTUATOR.	
2	ENSURE THAT THIS PIVOT SHOULDER BOLT IS SECURELY FASTENED WITH THE LOCKNUT.	
3	CHECK FRONT AND REAR CASTERS REGULARLY FOR HAIR AND DEBRIS, CLEAN AS NECESSARY, CHECK BRAKE FUNCTION ON REAR CASTERS.	
4	INSPECT ALL WELD SITES FOR CRACKING OR SEPARATION.	
5	ENSURE ALL NUTS ARE SECURE ON THE STUDS, ENSURE JAM NUTS ARE SECURE ON SHAFT	
6	MAKE SURE THE COTTER PIN IS IN PLACE.	
7	RUN ACTUATOR FROM LIMIT TO LIMIT TO ENSURE LIMIT STOPS ARE FUNCTIONING.	
8	PRESS THE EMERGENCY BUTTON TO ENSURE THAT ALL ELECTRICAL POWER IS CUT OFF.	
9	CHECK ALL THE FUNCTIONS ON THE HAND CONTROL – CHECK TO ENSURE WIRES ARE NOT PULLED OUT OF CONNECTOR ON HAND CONTROL CASE.	
10	CHECK FOR THE SMOOTH FUNCTION OF THE UP/DOWN SWITCHES.	
11	CHECK BATTERY PACKS FOR DAMAGE – CHECK THAT THEY WILL ACCEPT A CHARGE BY PUTTING THEM IN THE CHARGER.	
12	CHECK THE FUNCTION OF THE CHARGER LIGHTS (ON THE LIFT OR ON WALL CHARGER) BY INSERTING A BATTERY PACK – ENSURE THAT POWER LIGHT IS FUNCTIONAL.	
13	CHECK THAT THE SAFETY LATCHES ARE IN PLACE AND FUNCTIONAL.	
14	ENSURE THE LEGS ARE PARALLEL TO EACH OTHER WITH THE HELP OF A SQUARE – ENSURE THAT THE LEGS ARE PERPENDICULAR AT 90 DEGREES WITH THE BASE.	

# DIAGRAM



# LOGBOOK

Product Name : MINISTAND

Product Serial Number :

Date of purchase :

Warranty Period :

Distributed By :

Owner Checklist :

- Ensure the lift is serviced regularly as the Monthly inspection details on page 23.
- Contact an authorised Distributor / Service Agent immediately if there are any problems with the operation of the device.
- Ensure the logbook is completed and signed.
- Record any repairs required.
- Withdraw the patient lifter from service if inspection reveals that user safety is jeopardised in any way from use of the patient lifter.

## TO BE COMPLETED AFTER EACH SERVICE OR INSPECTION

Service Type:	Pre-delivery	Periodic inspection	Minor	Major
Condition report :	_____ _____			
Action taken :	_____ _____			
Date :	_____	Inspected by:	_____	
		Printed	Signature	

Service Type:	Pre-delivery	Periodic inspection	Minor	Major
Condition report :				
_____				
_____				
Action taken :				
_____				
_____				
Date :		Inspected by:		
_____		_____		
		Printed	Signature	

Service Type:	Pre-delivery	Periodic inspection	Minor	Major
Condition report :				
_____				
_____				
Action taken :				
_____				
_____				
Date :		Inspected by:		
_____		_____		
		Printed	Signature	

Service Type:	Pre-delivery	Periodic inspection	Minor	Major
Condition report :				
_____				
_____				
Action taken :				
_____				
_____				
Date :		Inspected by:		
_____		_____		
		Printed	Signature	

Service Type	Pre-delivery	Periodic inspection	Minor	Major
Condition report :				
_____				
_____				
Action taken :				
_____				
_____				
Date :		Inspected by:		
_____		_____		
		Printed	Signature	

Service Type:	Pre-delivery	Periodic inspection	Minor	Major
Condition report :				
_____				
_____				
Action taken :				
_____				
_____				
Date :		Inspected by:		
_____		_____		
		Printed	Signature	

Service Type	Pre-delivery	Periodic inspection	Minor	Major
Condition report :				
_____				
_____				
Action taken :				
_____				
_____				
Date :		Inspected by:		
_____		_____		
		Printed	Signature	

Service Type:	Pre-delivery	Periodic inspection	Minor	Major
Condition report :				
_____				
_____				
Action taken :				
_____				
_____				
Date :		Inspected by:		
_____		_____		
		Printed	Signature	

Service Type:	Pre-delivery	Periodic inspection	Minor	Major
Condition report :				
_____				
_____				
Action taken :				
_____				
_____				
Date :		Inspected by:		
_____		_____		
		Printed	Signature	



# WARRANTY

This warranty is extended only to the original purchaser/user of BHM products.

BHM Medical Inc. warrants its products to be free from defects in material under normal use and service, within the periods stated below from the date of purchase. If within such warranty period any such product shall be proven to be defective, such product shall be repaired or replaced at BHM Medical option. This warranty does not include any labor or shipping charges incurred in replacement part installation or repair of any such product. BHM Medical sole obligation and your exclusive remedy under this warranty shall be limited to such repair and/or replacement.

Patient Lifter	1 year
Tracks and installation	Life time warranty*
Weighing Devices	1 year
Accessories on Lifter	1 year
Slings	1 year
Batteries - Voyager Portable	3 months
Batteries - All other lifts	1 year
Easytrack System	1 year

For warranty service, please contact the dealer from whom you purchased the BHM Medical product. [In the event that you do not receive satisfactory warranty service, please contact BHM Medical (see contact information in Table of Contents).]

Do not return products to our factory without prior authorization. BHM Medical will issue a Return Merchandise Authorization (RMA) Number. C.O.D. shipments will be refused; all shipments to BHM Medical must be prepaid. For this warranty to be valid, the purchaser must present its original proof of purchase at the moment of the claim. The defective unit, assembly or part must be returned to BHM Medical for inspection. The part or components repaired or replaced are guaranteed for the remaining period of the initial warranty.

## **Limitations and Exclusions:**

The warranty above does not apply to serial numbered products if the serial number has been removed or defaced.

No warranty claim shall apply where the product or any other part thereof has been altered, varied, modified, or damaged; either accidentally or through improper or negligent use and storage. Warranty does not apply to products modified without BHM Medical express written consent (including but not limited to products modified with unauthorized parts or attachments), products damaged by reason of repairs made to any component without the specific consent of BHM Medical, or to products damaged by circumstances beyond BHM Medical control. BHM Medical will solely determine evaluation of warranty claim. The warranty does not apply to problems arising from normal wear or failure to adhere to the instructions in this manual. BHM Medical Inc. slings are void of warranty if not laundered as per instructions on the Sling Label.

BHM Medical Inc. shall not be liable for damages losses or inconveniences caused by a carrier.

This warranty replaces any other warranty expressed or implicit and constitutes BHM Medical Inc. only obligation towards the purchaser. BHM Medical shall not be liable for any consequential or incidental damages whatsoever.

---

\* Valid only if BHM Medical did the original installation. Warranty voids if tracks/installation have been modified.

