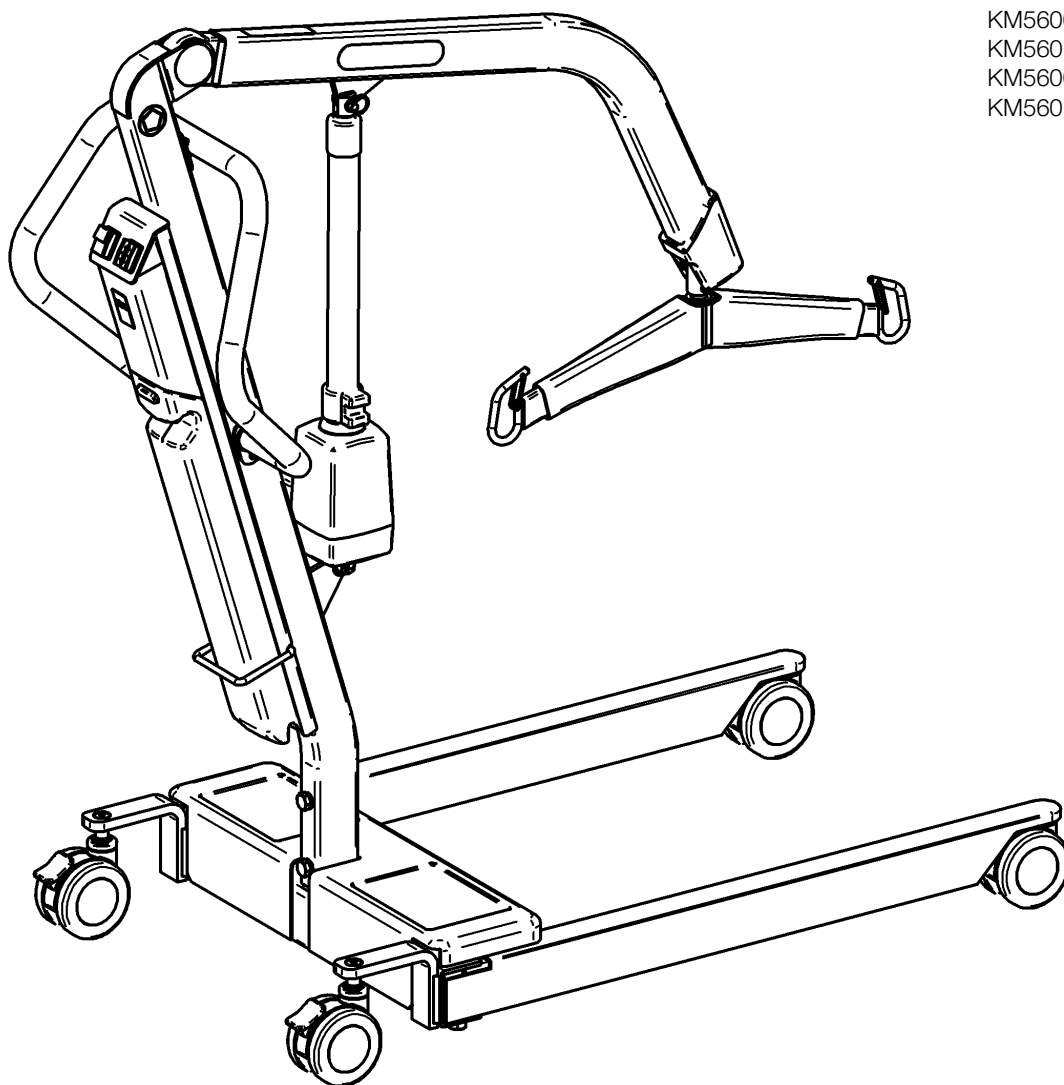


# ARJO

## MAXI 500 OPERATING AND PRODUCT CARE INSTRUCTIONS

Models:  
KM560001  
KM560101  
KM560081  
KM560181



001.20815.EN rev.1  
March 2006



© ARJO Hospital Equipment AB 2006

ARJO products are patented or patent pending. Patent information is available by contacting ARJO Hospital Equipment AB.

Our policy is one of continuous development, and we therefore reserve the right to make technical alterations without notice. The content of this publication may not be copied either whole or in part without the consent of ARJO Hospital Equipment AB.

# Contents

---

## **General 1**

- Supplier Information 1
- Service and Support 1
  - Definitions 1
- Intended Use 2
- Keys to symbols 2

## **Part Designation 3**

## **Compatible Slings 4**

- Clip Slings 4
- Loop Slings 5

## **Safety Instructions 6**

- General 6
- Shock Prevention 7
- Equipment Warning Labels 7

## **Operating the Maxi 500 8**

- Power base models 8
- Correct use of the brakes 8
- Emergency shut-off 9
- Raising and lowering a patient 9
  - Transferring a patient 10
    - Battery pack 10
    - Removable battery pack 10
    - Emergency lowering 10
    - Battery charging 11
- Battery and battery charger safety practices 12

## **Lifting a Resident/Patient 13**

- Lifting a resident/patient from a chair 13
- Lifting a resident/patient from a bed 14
- Lifting a resident/patient from the floor 14

## **Digital Scale 16**

- Model 1000 Scale 16
- Digital Scale Calibration 16

## **Parts List: General Exploded View 17**

## **Parts List: Base Exploded View 19**

## **Parts List: Boom Exploded View 20**

## **Care and Preventive Maintenance 21**

## **Troubleshooting 23**

## **Labels on the Lift 24**

## **Technical Specifications 25**

# General

---

Thank you for using the Maxi 500.

Your Maxi 500 is part of a series of quality products designed especially for hospitals, nursing homes and other health care uses.

We are dedicated to serving your needs and providing the best products available along with training that will bring your staff maximum benefit from every Arjo product.

Please contact us if you have any questions about the operation or maintenance of your Arjo equipment.

**WARNING: Read before use.**

**Before using your Maxi 500, you must read and fully understand these Operating and Product Care Instructions. You must be trained on the Maxi 500, and on any accessories, as well as its functions and controls.**

The Operating and Product Care Instructions are mandatory for the safe and effective handling of the Maxi 500, including the safety of the resident/patient and the caregiver.

## Supplier information

This product has been manufactured for ARJO by:  
BHM Medical Inc.  
2001 Tanguay Street  
Magog (Quebec)  
Canada J1X 5Y5

Authorized representative in Europe:  
ARJO Hospital Equipment AB  
Box 61  
S-241 21 Eslöv  
Sweden

## Service and support

A service routine has to be performed on your Maxi 500 by ARJO trained personnel to ensure the safety and operation of your product.

*See chapter Care and Preventive Maintenance.*

If you require further information, please contact your local ARJO representative, which can offer comprehensive support and service programs to maximize the long-term safety, reliability and value of the product. Contact your local ARJO representative for replacement parts.

The telephone number appears on the last page of this manual.

## Definitions

**WARNING: Failure to understand and follow this instruction may result in injury to yourself and others.**

**CAUTION: Failure to follow these instructions may cause damage to the product(s).**

# General

## Intended Use

Maxi 500 is a mobile passive lift with a Safe Working Load of 227 kg (500 lb), intended to be used on horizontal surfaces for lifting and transferring in hospitals, nursing homes or other health care facilities where the resident/patient:

- Sits in a wheelchair;
- Has no capacity to support him/herself;
- Cannot stand unsupported and is not able to bear weight, not even partially;
- Is dependant on the caregiver in most situations; or where the resident/patient:
  - Is passive;
  - Might be almost or is completely bedridden;
  - Is often stiff or has contracted joints;
  - Is totally dependent on the caregiver.

The lift is for transferring residents/patients only. It is not intended to be a transport device or to be used to transport a resident/patient over any long distance. The lift is to be used for patients within the specified weight limit indicated on the lift (500 lb or 227 kg) and the specified environmental conditions described in this manual.

The Maxi 500 shall always be handled by a trained caregiver, who shall continuously attend to the resident/patient during lift application and operation, and in accordance with the instructions outlined in these Operating and Product Care Instructions.

The Maxi 500 is intended to be used with clip slings or loop slings, depending on the spreader bar. Use only slings that are designed for Maxi 500.

**WARNING: Before attempting to use the Maxi 500, a full clinical assessment of the resident/patient's condition and suitability must be carried out by a qualified person.**

**CAUTION: Arjo Hospital Equipment AB does not recommend usage of the lift and mounting of the charger in humid, salty, oxidizing and/or chlorinated conditions. In such cases, Arjo recommends a proactive regiment of frequent inspections and maintenance to be carried out.**

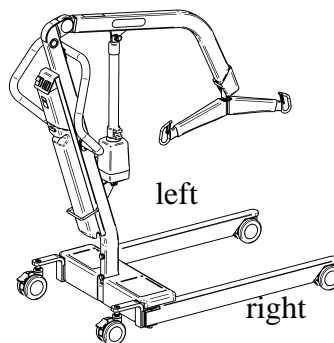
## Keys to symbols

The following symbols are used in this manual.

Pinching

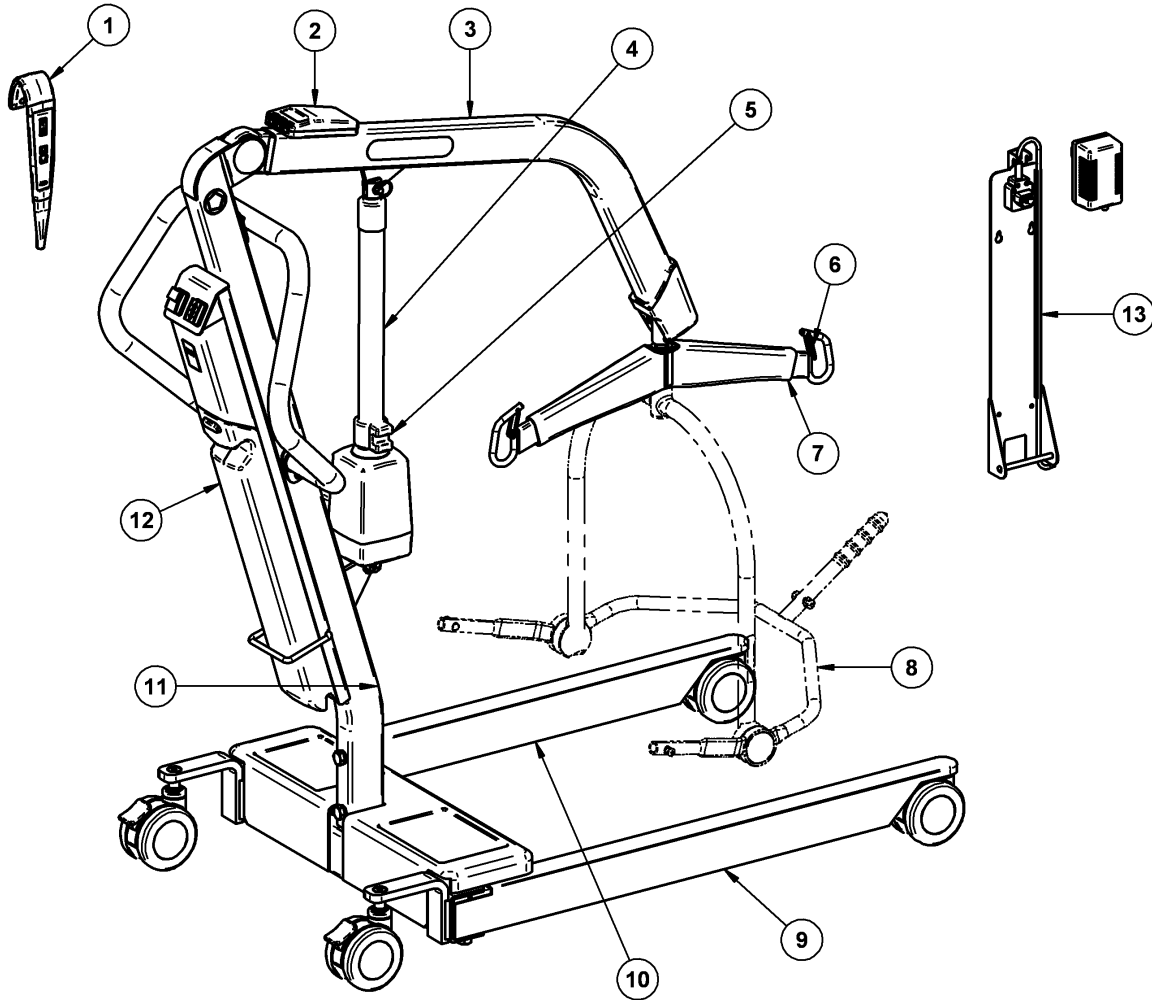


Read Operating and Product Care Instructions



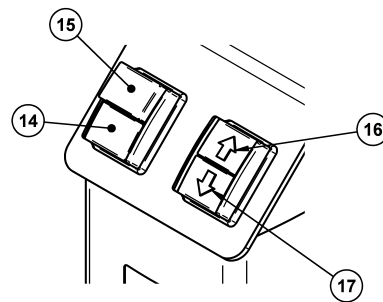
References to left or right in these instructions are as viewed from the caregiver's pushing position, standing at the rear of the Maxi 500, facing forward.

# Part Designation



## LEGEND

- |                                      |                  |
|--------------------------------------|------------------|
| 1. Hand control                      | 9. Right leg     |
| 2. Scale panel (optional)            | 10. Left leg     |
| 3. Boom                              | 11. Mast         |
| 4. Actuator                          | 12. Battery pack |
| 5. Emergency lowering                | 13. Charger      |
| 6. Safety latch                      | 14. Start button |
| 7. Two-point spreader bar (optional) | 15. Stop button  |
| 8. DPS spreader bar (optional)       | 16. Up button    |
|                                      | 17. Down button  |

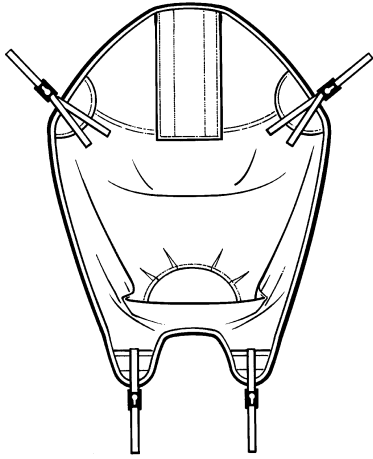


# Compatible Slings

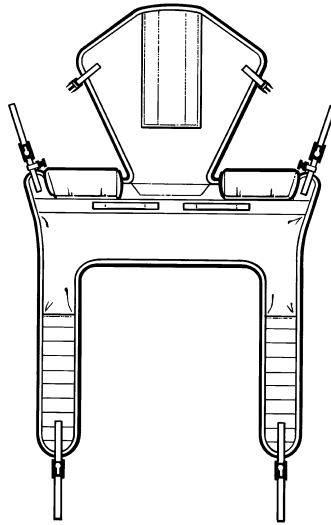
---

ARJO clip sling profiles that can be used with the Maxi 500.

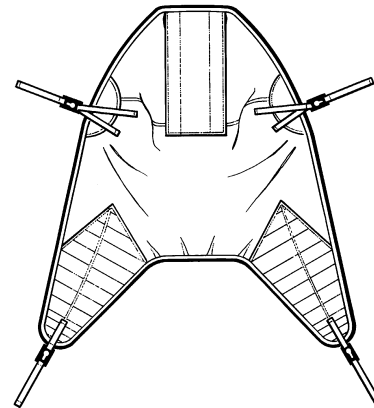
## Clip slings



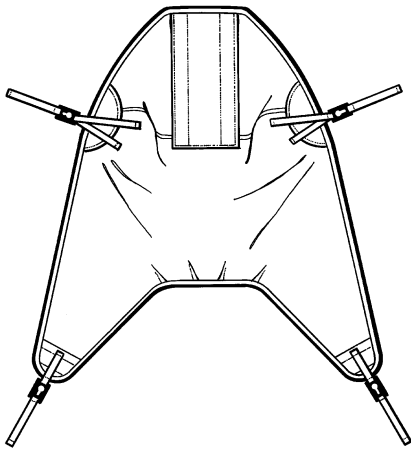
Four-point amputee sling



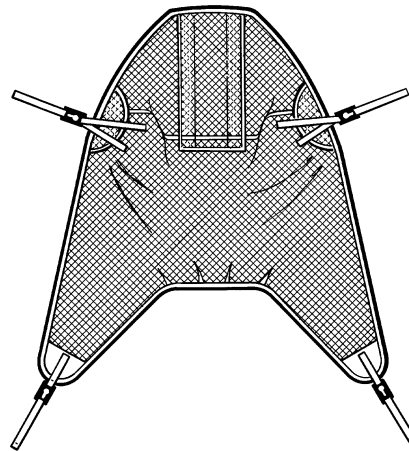
Four-point toileting sling (with headrest)



Four-point padded sling



Four-point unpadded sling



Four-point mesh sling

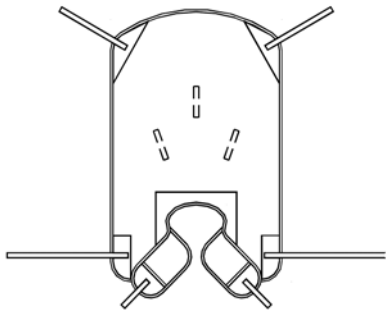
For more information about clip slings and how to use them, refer to the ARJO Slings User Guide.

# Compatible Slings

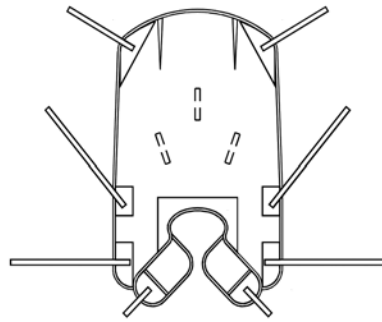
---

ARJO loop sling profiles that can be used with the Maxi 500.

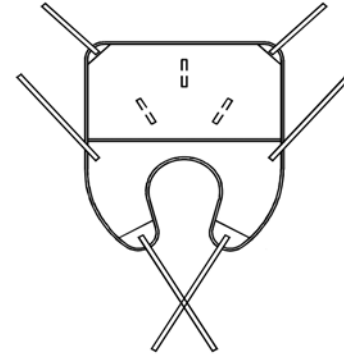
## Loop slings



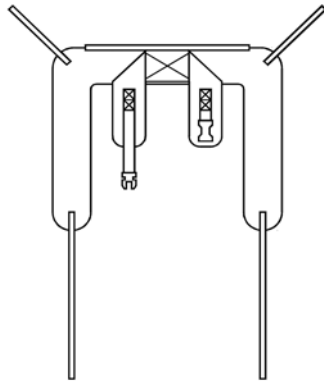
Hammock (THA-X)



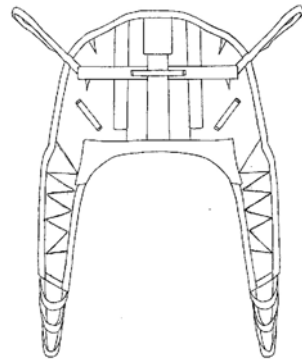
Hammock 6 (THA6-X)



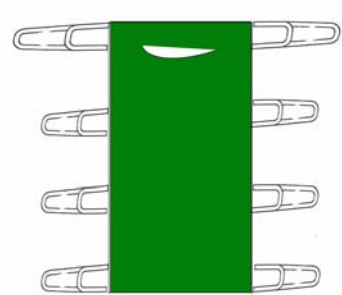
Quick-fit (TIR-X)



Hygienic (THY-X)



Combi 626002



Repositioning 624500

For more information about loop slings and how to use them, refer to the BHM Slings User Manual.



# Safety Instructions

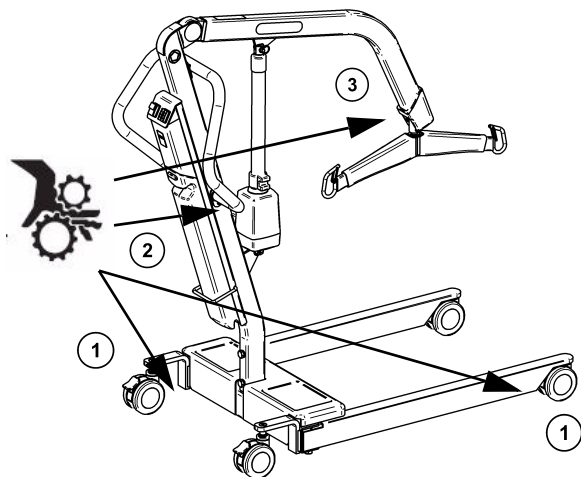
---

**WARNING: Only manufacturer designated parts designed for the purpose shall be used for the Maxi 500, in order to avoid injuries attributable to the use of inadequate parts.**

**WARNING: Unauthorized modifications or repairs on the Maxi 500 will affect its safety and invalidate any warranty. The manufacturer will not accept responsibility for any accidents, incidents or lack of performance that occur as a result of any such unauthorized modification or repair.**

## General

- Always carry out the recommended daily maintenance before using the lift.
- Always maneuver the lift with the handles provided.
- Do not attempt to push or pull a loaded lift over a floor obstruction which the castors are unable to ride over easily, including steps, door thresholds or moving sidewalk.
- Do not push the lift at a speed which exceeds a slow walking pace (3 km/hour or 0.8 meter/second).
- An assessment of the suitability for transfer of a patient who is connected to electrodes, catheters or other medical devices must be conducted by qualified personnel before performing a transfer.
- This mobile patient lift must be used by a caregiver trained to these instructions and qualified to work with the patient to be transferred and should never be used by a patient on their own.
- Always ensure that controls and safety features are used only in accordance with the rules specified in this manual. Never attempt to force a control or button on the lift.
- While the base of the lift can be opened to ease transfer of a patient, it should be kept closed during transport.
- Avoid any impact during transportation.
- Do not put fingers, hands or feet where space is limited (see image below). This could pinch, cut, or seriously harm any body parts. This includes spaces between the lift base and floor (1), between actuator cab and mast tubing (2) and between spreader bar block and boom tubing (3).



# Safety Instructions

---

**CAUTION: Keep all components of the lift clean and dry, and have electrical and mechanical safety checkpoints done as instructed in the Care and Preventive Maintenance section of this manual.**

## Shock prevention

- Do not touch a damaged power cord. Electrically live equipment can result in serious injuries. If the lift or charger has any exposed or damaged wires, contact your local ARJO representative immediately.
- Check nameplate for voltage and cycle requirements. These requirements differ by country. Do not attempt to use the lift in an area that has a different voltage and cycle requirement.
- Do not attempt to expose, service or repair the lift, battery or charger. If any unit is malfunctioning, contact your local ARJO representative.

## Equipment warning labels

Inspect all precautionary labels on the equipment. Order and replace all labels that cannot be easily read.

# Operating the Maxi 500

---

The Maxi 500 is delivered to you in a fully assembled state. Unpack the battery pack supplied, and fully charge it as described in the section “Battery Charging.” When the battery pack is fully charged, disconnect the electric power, remove the pack from the charger, and insert it fully back into the Maxi 500 battery compartment. An electrical connection is made automatically. Ensure that the green button (located on the control panel above the battery) is pushed in, and that a sling is available.

Operating the Maxi 500 is simple. By using the lift, an operator is able to raise, transfer and lower a patient safely.

## **WARNING: Read before use**

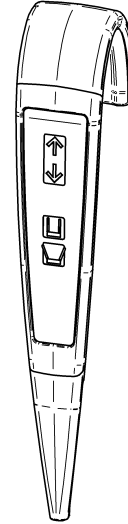
**Before using your Maxi 500, you must read and fully understand these Operating and Product Care Instructions. You must be trained on the Maxi 500 and on any accessories, as well as its functions and controls.**

## **CAUTION:**

**Always carry out the items marked as “Before each use” in the Preventive Maintenance Schedule before using the lift.**

## **Power base models**

The base of the lift can be set with the legs opened or closed by using the two bottom buttons on the hand control.



## **Correct use of the brakes**

Foot operated brakes are fitted on both rear castors.

### **Brakes should only be used in the following situations:**

- When the lifter and the resident/patient are momentarily at rest; for example, during preparation for transferring to a bed or a chair.
- Whenever movement of the lift has to be halted while transporting a patient.
- Travelling across or stopping on slightly inclined floors may call for temporary use of the brakes.

### **Brakes should NOT be used in the following situation:**

- When raising or lowering a patient in the lift over a bed or chair. Leaving the brakes off allows the lift (with patient) to maintain its center of gravity throughout the transfer, and reduces the tendency for the patient to move laterally outside the base.

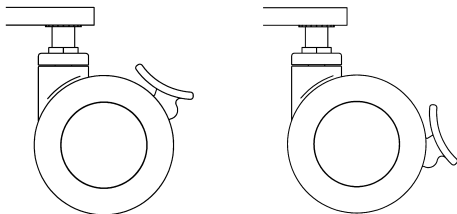
# Operating the Maxi 500

---

## Correct use of the brakes

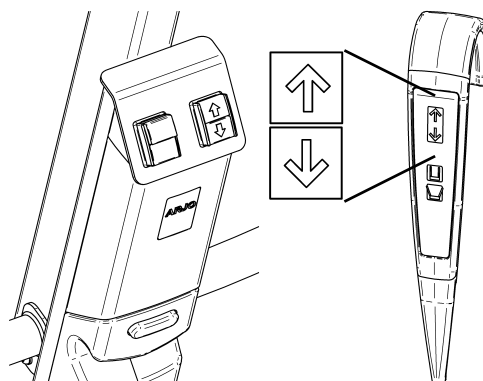
### Brakes application and release:

- To apply brakes, step on the back portion of pad.
- To release brakes, step on the front portion of pad or lift with toe of shoe.



## Raising and lowering a patient

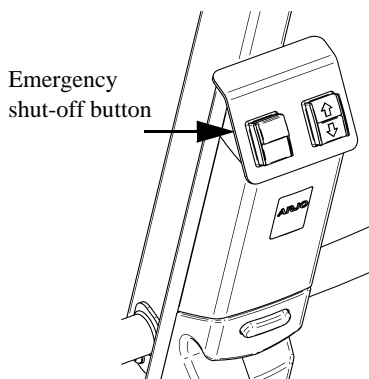
The electrical actuator can be operated in both directions and allows the operator to raise or lower the patient without any physical effort. The hand control can be used to operate the lift.



## Emergency shut-off

The operator can shut off the electrical power at any time by pressing the red emergency button on the top of control box. Reset the emergency shut-off function by pressing on the green button.

First-time users should practice the shut-off maneuver before operating the lift with a patient.



## To raise the patient

Touch the “UP” button on the hand control. Keep your finger on the button until the patient is at the desired height, then release finger pressure to stop the movement.

## To lower the patient

Touch the “DOWN” button on the hand control. Keep your finger on the button until the patient is at the desired height, then release finger pressure to stop the movement.

Auxiliary “UP” and “DOWN” buttons are located on the control box attached to the mast.

### These controls serve two functions:

They are secondary controls in the event the hand control stops functioning, or if two attendants are involved in the transfer: one can use the auxiliary controls, while the other moves into a position where he is with the patient continuously.

When you push two buttons simultaneously, the first function button pushed will override all other functions until you release one button.

# Operating the Maxi 500

---

## Transferring a patient

Most patients can be rotated a full 360 degrees with no restriction, even at elevated levels. This makes it easier for a wheelchair patient to be maneuvered using front or side entry, as required. This ability to rotate patients also allows the caregiver to properly position the patient when performing a transfer to and from a bed.

When the patient is in a sling facing the mast, lower the patient to the lowest convenient height above the floor. This will provide added stability and comfort to the patient.

Sewn handles are provided on both sides of the total lift sling to allow better positioning for the caregiver, enhancing patient safety.

Have someone assist you when transferring a patient. For information about how to attach a sling to the lift, read the “Lifting a resident/patient” section.

### **WARNING:**

**This mobile floor lift is not intended to be a transport device. A patient in the lift should not be moved more than a few meters.**

### **WARNING:**

**Do not attempt to maneuver the lift by pulling on the mast, boom, actuator or patient.**

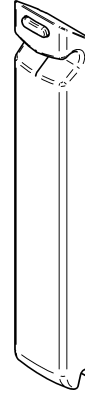
## Battery Pack

The battery pack is medically approved according to EN 60601-1, CAN/CSA-C22-2, No. 601-1 M90 and UL 2601-1.

The battery pack assembly consists of two 12-volt, 4 AH (24 volts capacity), batteries delivering up to 35 lifts per charge (500 lb or 227 kg). Battery life is variable (2-3 years) and is influenced by proper charging practices and load exertion.

## Removable Battery Pack

The removable battery pack reduces the time your lift is out of service because of a discharged battery. To remove a discharged battery pack, push the red button and pull straight out towards you. Replace the pack with a fully charged one from the wall mounted charging unit.

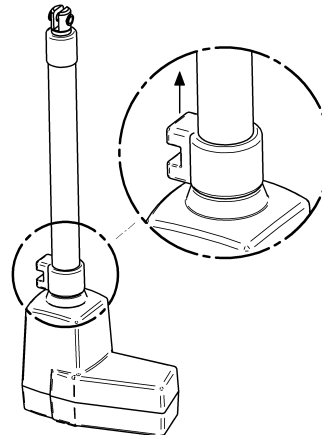


## Emergency Lowering

The Maxi 500 is equipped with a special safety feature that allows the boom to be lowered even if the electrical system does not operate.

Locate the red emergency lowering device handle directly above the plastic actuator motor cover.

Following the direction of the arrow, pull straight up and hold. This will allow the actuator to slowly lower to the desired level (this component is spring loaded and will return to normal and stop the lowering process when released).



# Operating the Maxi 500

---

## Battery Charging

The Maxi 500 uses sealed lead-acid batteries mounted within the control box. Unlike nickel-cadmium batteries, lead-acid batteries are not subject to a memory effect. Therefore, they should not be completely drained before being recharged. The control box is equipped with an automatic control shut-off after 20 seconds of inactivity to prevent any battery drainage while the lift is in the stand-by mode. Power to the lift is reactivated by pushing any hand control button. The lift also has a battery discharge indicator, located on the cover above the battery.

It is recommended that the battery be removed from the lift when it is not used for an extended period of time, and recharged when the battery discharge indicator displays amber.

To prolong the battery pack life, recharge it before it reaches a low state of battery charge, and certainly before it is totally discharged.

Your lift is equipped with an audible warning device, which will make a noise when the battery discharge indicator reaches the red light range.

To ensure that the Maxi 500 is always ready for use, it is recommended that a fully charged battery pack always be available. Do this by having additional battery packs available and keeping one charging while the other is in use.

When a fully charged battery is inserted into the lift, the display will return to the green fully charged position, regardless of the level the indicator had reached previously. However, if a partially charged battery is inserted, the previous indicator level will be maintained, even though the recently inserted battery may be in a better state of charge than indicated. To achieve a true indication of battery condition, a fully charged battery must be inserted into the lift. This will reset the indicator.

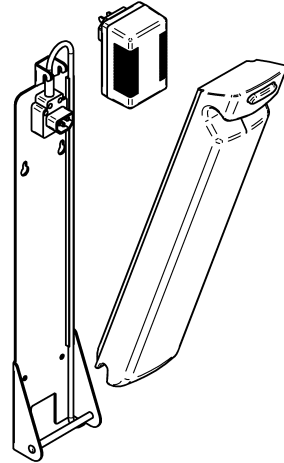
When using the battery charger for the first time, or if the cable has been unplugged from the charger, connect the cable fully into the charger before connecting to the main electrical socket.

### **CAUTION:**

**Batteries need to be charged for a minimum of 8 hours prior to initial use of this lift.**

Place the battery pack on the charger as follows:

- 1 When the LED on the battery discharge indicator displays amber, complete the lift/lower cycle. Then, take the lift to a convenient location and remove the battery pack by holding it securely, depressing the button at the top of the battery pack, then pulling it out carefully.



- 2 Insert the battery pack into the charger unit and push it firmly. The charging connector will automatically connect, as there is no on/off switch. Then, turn on the power.
- 3 A red LED indicator will light up. A solid light indicates that the charger is working. When the light is flashing, the battery has finished charging. Disconnect the main plug from the supplied socket when the charger is not in use.
- 4 A discharged battery should take approximately eight hours to fully recharge.
- 5 When the battery pack is fully charged, disconnect it from power, remove the pack from the charger, and insert it back into the Maxi 500. An electrical connection is made automatically.
- 6 Press the green Reset button. The Maxi 500 is ready for use.

# Operating the Maxi 500

---

**WARNING:**

Hold the pack firmly to ensure that it does not drop and become damaged or cause injury.

**WARNING:**

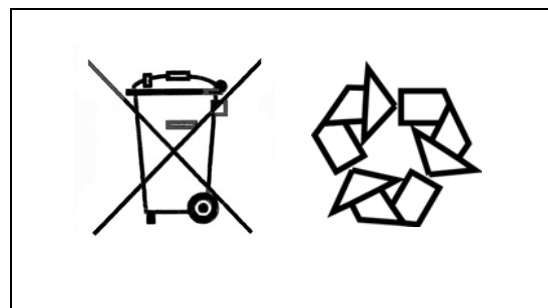
Ensure that the electric power to the charger unit is switched off before connecting the battery.

**WARNING:**

Do not place or store the battery under direct sunlight or near a heat source. Do not expose the batteries or battery charger to flames.

## Battery and battery charger safety practices

- The charger is for indoor use only, and should be used in a dry environment. Do not use it in a bathroom.
- Do not charge batteries in unventilated areas.
- The charger must not be covered or exposed to dust. The metal contacts must be kept clean.
- The battery charger is for use only with Maxi 500 batteries that are supplied by ARJO.
- The battery pack may stay connected to the charger unit when it is fully charged without damage.
- Do not short-circuit the battery.
- Do not crush, puncture, open, dismantle or otherwise mechanically interfere with the batteries.
- The power socket must be easily accessible. If a fault condition occurs, switch off the power cord and remove the connection plug from the socket.
- Do not store batteries at a temperature higher than 40°C (140°F). Should the battery casing crack and cause contents to come in contact with skin or clothing, rinse immediately with water. If contents come in contact with the eyes, rinse immediately with plenty of water and seek medical attention.
- The abbreviation “Pb” shown adjacent to the recycling and trash bin symbols on the battery pack label is the element symbol for lead. It indicates that the battery contains lead, and therefore should not be disposed of, but recycled.
- For recycling and disposal of the batteries the rules according to local regulations must be followed. If not, they may explode, leak and cause personal injury. When returning batteries, insulate their terminals with adhesive tape, otherwise, the residual electricity in used batteries may cause fire or explosion. Picture below shows the symbols for disposal and recycling.



# Lifting a resident/patient

For detailed instructions on the transfer of residents/patients and use of various slings, refer to the instructions provided by the manufacturer of the sling, such as the ARJO Sling Guide.

## Lifting a resident/patient from a chair

*Proper body mechanics and sound ergonomic positioning should be maintained by the caregiver at all times.*

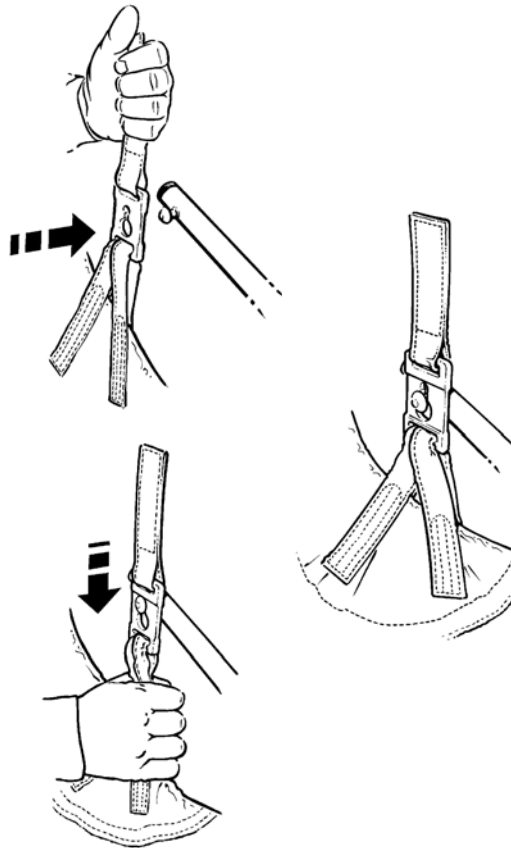
The lifting techniques described can be used for seated residents/patients regardless of where they may be seated (on the edge of a bed, in a chair, wheelchair or similar).

**WARNING: When using clip slings (see picture on right), always check that the sling attachment clips are correctly attached and remain in tension as the weight of the resident is gradually taken up. Loop sling attachments are shown on page 13.**

- 1 Place the sling around the resident/patient so that the base of his spine is covered, and the head support area of the sling is behind the head.
- 2 Pull each leg strap under the thigh so that it emerges on the inside of the thigh.
- 3 Ensure the positioning handle on the spreader bar is facing away from the resident/patient, and that the wide part of the spreader bar is at or just below shoulder level.
- 4 Position the spreader bar close enough to be able to connect the shoulder strap clips of the sling to the frame.
- 5 Connect these first, then tilt the frame and attach the leg sections.
- 6 Ensure that all clips/loops are securely connected, then raise the resident/patient using the hand control.
- 7 The head support area of the sling should now come into use. This is the most comfortable position for transfer or transportation, as it reduces pressure on the resident's thighs.
- 8 The angle of recline can be increased for the comfort of more restless residents/patients, when lowering the resident/patient back into a chair or transferring to a chair from the bed.

- 9 Before transportation, turn the resident/patient to face the direction of travel, and keep at a normal chair height. This gives confidence and dignity to the resident/patient.
- 10 Avoid lifting the resident/patient higher than the eyes of the attendant to lessen the impression of height for confused residents/patients.
- 11 Support the resident/patient to stop excessive swinging and to give a feeling of added security.
- 12 The patient may be transferred to and placed in a chair, or on a bed.
- 13 Lower the patient and unfasten the sling from the spreader bar. Move the Maxi 500 away before removing the sling from under the patient.

**WARNING: To avoid injury or discomfort, do not lower the spreader bar onto the resident/patient.**





# Lifting a resident/patient

---

## Lifting a resident/patient from a bed

*Proper body mechanics and sound ergonomic positioning should be maintained by the caregiver at all times.*

Before lifting a person from a bed, ensure there is sufficient clearance underneath the bed to accommodate the Maxi 500 chassis legs.

- 1 Position the resident/patient onto the sling by rolling the patient towards you, then folding the sling in half and placing it behind the resident/patient's back.
- 2 Position the sling carefully so that, when rolled back, the resident/patient will lay on the center of the sling.
- 3 Check that the head support area of the sling covers the resident/patient's neck.
- 4 Alternately, the resident/patient can be brought into a sitting posture. Then, position the sling as detailed in the section "Lifting from a chair".
- 5 Approach the bed with the open side of the spreader bar towards the patient's head. Position the Maxi 500 so that the spreader bar is just above and centered over the patient.
- 6 Tilt the frame towards the shoulders to attach the shoulder strap clips.
- 7 Connect the sling leg pieces under the thighs by lifting one leg at a time. You may need to lower the spreader bar a little, using the hand control.
- 8 When all the connectors are securely attached, raise the resident/patient from the bed.
- 9 Transport the patient where you want to transfer him and lower him.
- 10 Unfasten the sling from the spreader bar. Move the Maxi 500 away before removing the sling from under the patient.

## Lifting a resident/patient from the floor

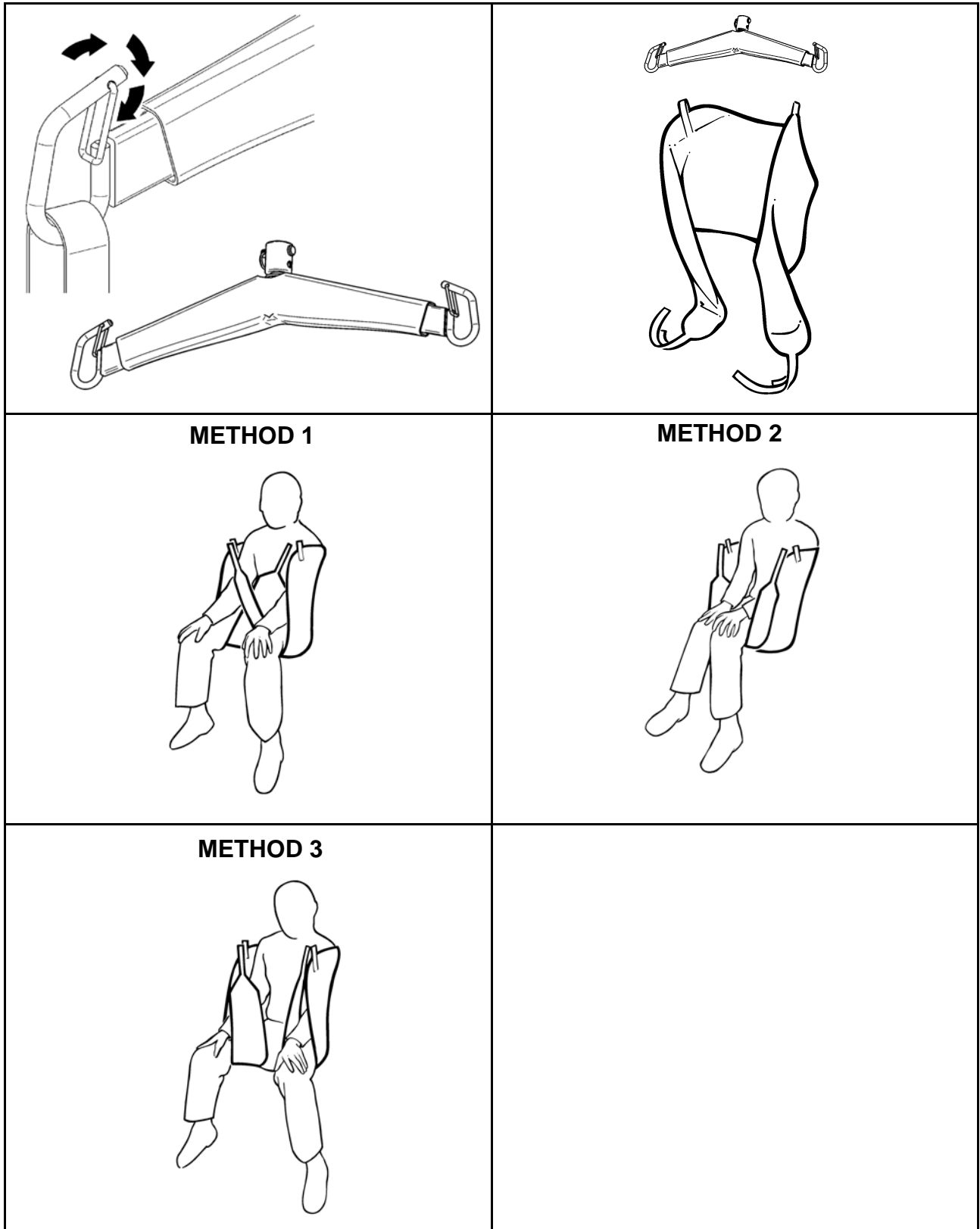
*Proper body mechanics and sound ergonomic positioning should be maintained by the caregiver at all times.*

Clients being lifted from the floor are normally in this position due to a slip or fall. These clients should only be lifted after examination by qualified medical personnel.

The resident/patient can be lifted from a completely reclined position on the floor, but for his comfort, put a pillow under his head first.

- 1 Place the sling around the resident/patient as in section "Lifting from a Bed."
- 2 Depending on circumstances, space or position of patient, approach the patient with the open part of the chassis.
- 3 Attach the shoulder strap clips/loops first, then with the open part of the sling support frame pointing downwards towards the shoulders, connect the leg strap clips/loops.
- 4 Adjustment of the spreader bar height may have to be made before connection is possible.
- 5 When lifting from the floor, some operators prefer to connect the leg strap clips first (this in particular applies to residents/patients with large thighs).
- 6 To use this method, raise the hip and knee into maximum flexion and hook up the leg strap clips.
- 7 Tilt the frame towards the shoulders for attaching the shoulder strap clips.
- 8 When all the connectors are securely attached, raise the resident/patient from the floor in a semi-recumbent position.
- 9 Once raised from the floor, ensure the resident/patient's legs are clear of the chassis before continuing to lift.
- 10 The patient may be transferred to and placed in a chair, or on a bed.
- 11 Lower the patient and unfasten the sling from the spreader bar. Move the Maxi 500 away before removing the sling from under the patient.

# Lifting a resident/patient

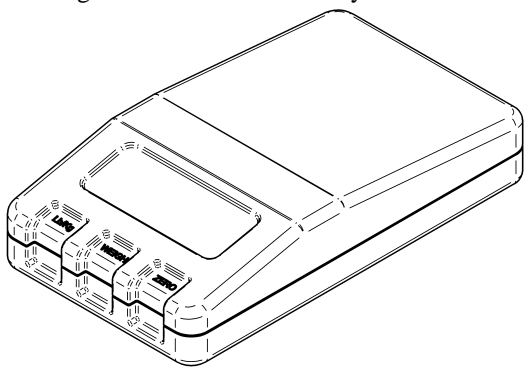


# Digital Scale

## Model 1000 Scale

The **MODEL 1000** weight module is a compact and precise scale system integrated into the patient lifts **and specifically designed for patient lifts.**

Completely self-contained, the MODEL 1000 scale combines the latest precision strain gauge technology and microprocessor signal conditioning to provide stable, accurate and repeatable weight data, with a calibrated accuracy of 0.1%. One-button Auto Zero Electronics makes resident/patient weighing quick and easy. The MODEL 1000 scale derives its power from a single 9-volts Lithium battery.

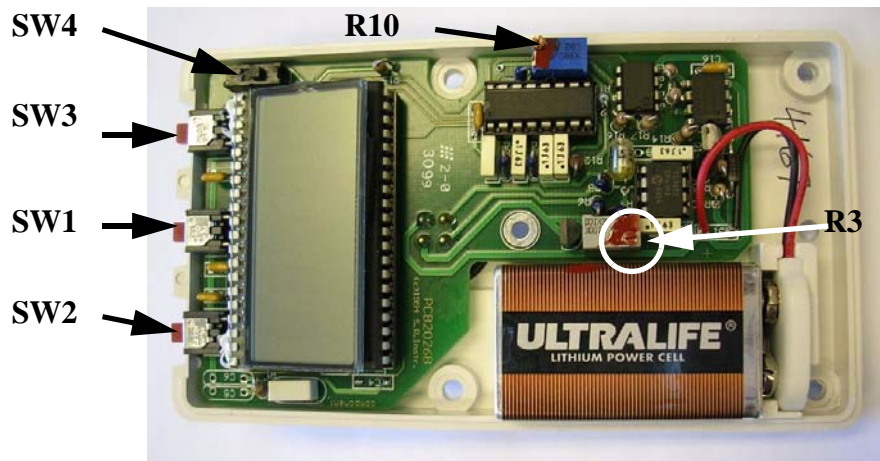


When battery replacement is required, an indicator will show on the display. Simply remove the four screws on the bottom of the case and remove the top casing to access the battery.

**CAUTION:**  
The Load Cell contains no user serviceable components and should be serviced by authorized personnel only. Any unauthorized tampering will void the warranty.

## Digital Scale Calibration

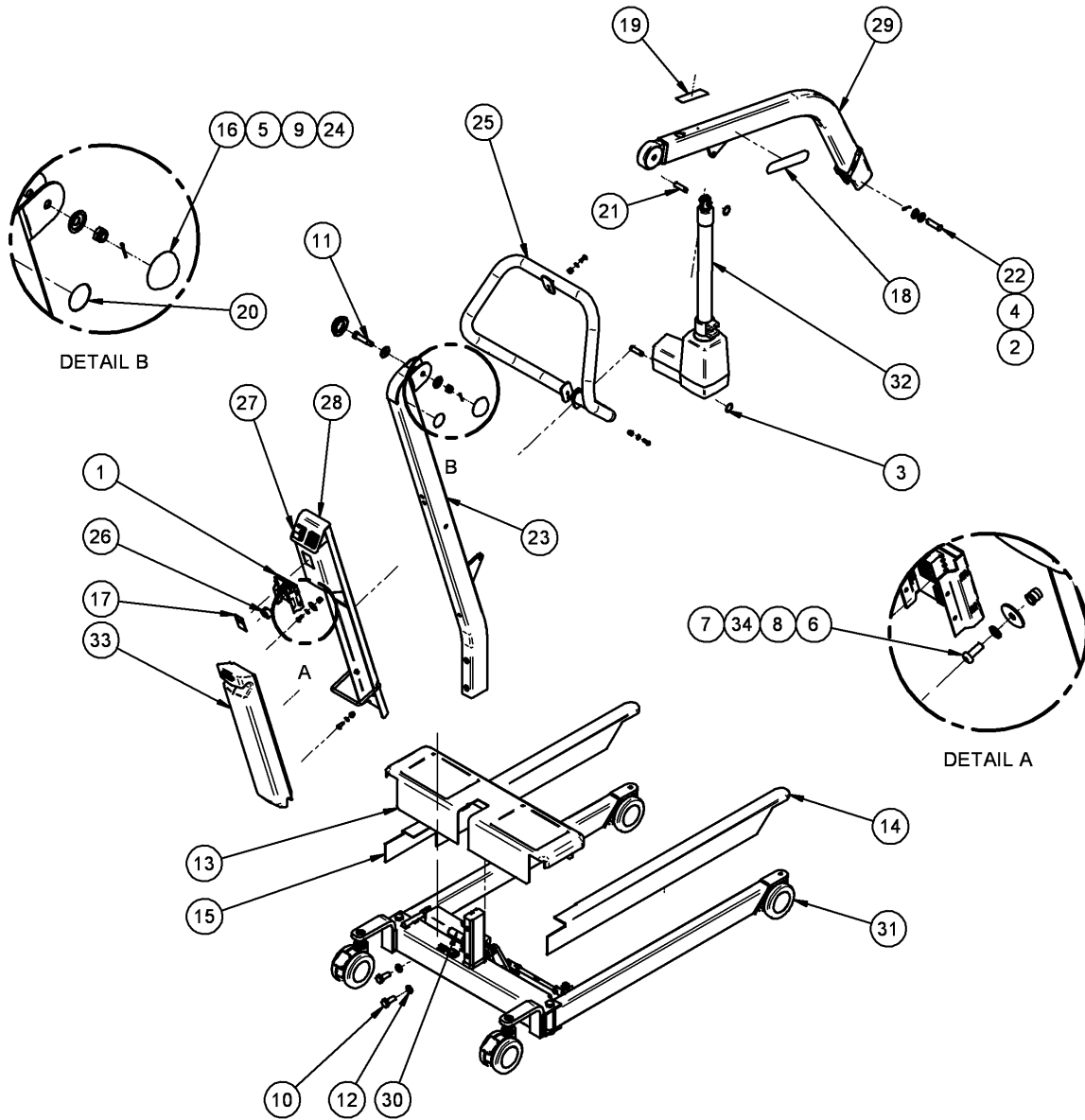
- 1 The serial numbers for display and load cell must be identical.
- 2 Remove the screws from the back of the display to expose the electronics.
- 3 Adjust switch SW4 to the **CAL.** position (**DOWN**).
- 4 When no weight is applied to the system (including sling), press SW1 (weight button) to adjust R3 (offset potentiometer) so that the display reads a +30 pound offset. Note: display will periodically flash **CAL.** to let you know you are in **CAL.** mode.
- 5 Attach the sling to the load cell.
- 6 Press SW2 (zero button) to zero the display.
- 7 Place a calibrated (must be at least Class F NIST traceable) weight on to the sling and adjust R10 to that weight. Remove weight, reset zero (switch SW2) and repeat. It is recommended that you use at least 200 lb of calibrated weight to achieve an accurate calibration.
- 8 When the reading of the display repeats the correct weight, remove all weight from the scale, then return switch SW4 to the run position (**UP**).
- 9 Press zero button (SW2).
- 10 When the system indicates "0.0", place a calibrated weight onto the sling and make sure that the scale reads the correct value. Check scale at maximum weight. All readings must be within 0.1% of NIST traceable standard.



**CAUTION:**  
Calibration shall be performed by a qualified technician in order not to invalidate the calibration certificate.

# Parts List: General Exploded View

---

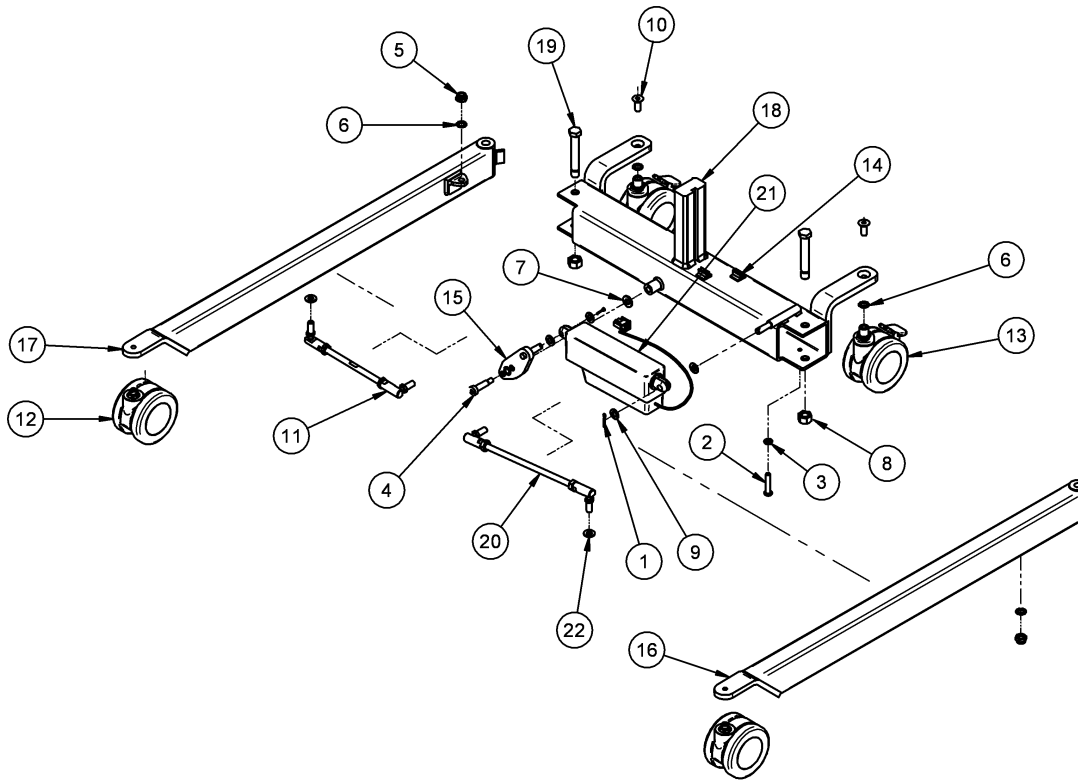


# Parts List: General Parts list

---

Item #	Part #	Description (eng)	Qty
1	492.20800	MAXI 500 PCB ASS'Y	1
2	000.00860	COTTER PIN 3/32 X 3/4	1
3	000.00921	SPLIT RING	2
4	000.00980	FLAT WASHER NYLON 1/2 X 1/16	2
5	000.01800	COTTER PIN 2 X 20	1
6	000.03105	SCREW M6 X 16 BUTTON ZINC	5
7	000.03405	NUT INSERT AT M6 X 1.0	5
8	000.03420	LOCKWASHER M6 ZINC	5
9	000.04410	LOCKNUT M10 ZINC	1
10	000.04550	SCREW M12 X 30 HEX ZINC	2
11	000.04610	SHOULDER 12 X 40 (M10)	1
12	000.04910	LOCKWASHER M12 ZINC	2
13	000.20317	BASE COVER MAXI 500	1
14	000.20326	MAXI 500 RIGHT LEG COVER	1
15	000.20331	MAXI 500 LEFT LEG COVER	1
16	000.20501	BOLT CAP MAXI 500	2
17	001.16070.33	STICKER "ARJO"	1
18	001.20805	STICKER MAXI 500	2
19	001.20807	STICKER TOP BOOM MAXI 500	1
20	001.20810	STICKER SWL 227KG MAXI 500	2
21	203.06150	CLEVIS 10 X 38.5	2
22	203.06152	CLEVIS PIN ø13 X 44	1
23	236.20816	MAXI 500 MAST	1
24	236.20830	BOOM PIVOT SPACER	2
25	233.20850	MAXI 500 HANDLE	1
26	405.20800	10MM FERRITE	1
27	460.20800	BREAKER SWITCH 10A	1
28	700.16260	CTRL BOX WITHOUT SWITCH & PCB	1
29	700.20221	MAXI 500 BOOM ASSY	1
30	700.20800	WIRE HARNESS POWER BASE	1
31	700.20811	MAXI 500 BASE ASSY	1
32	E6520	LA34-350 ACTUATOR	1
33	NDA0100-20	BATTERY ARJO (GRAY)	1
34	000.03450	FLAT WASHER M6 ZINC (25 OD)	1

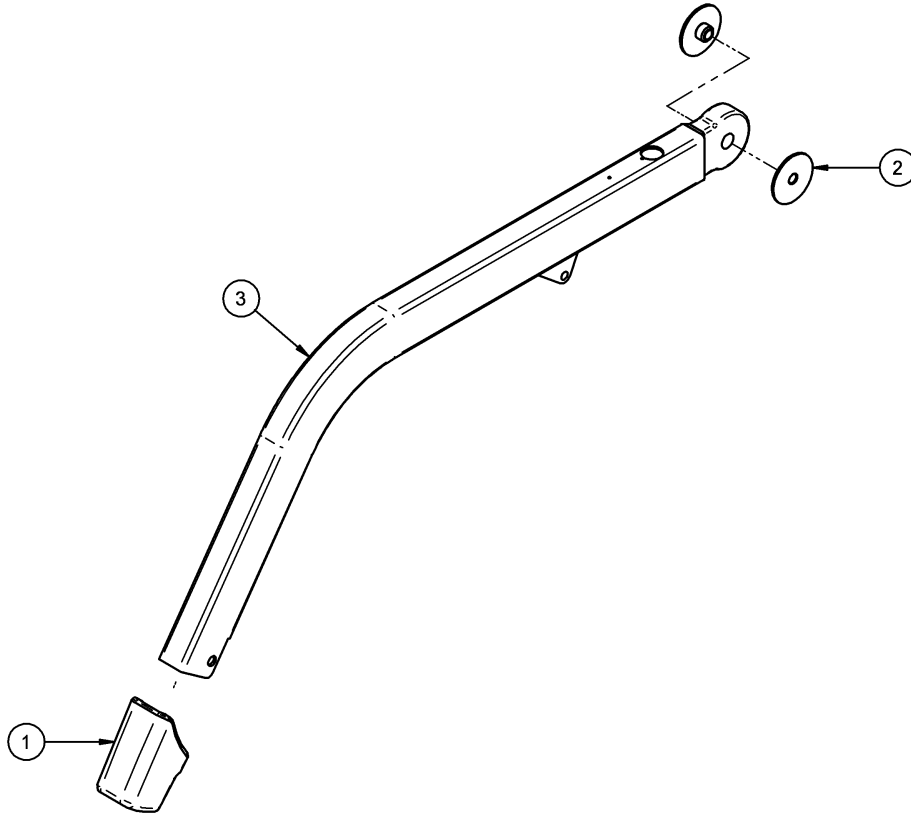
# Parts List: Base Exploded View



Item #	Part #	Description (eng)	Qty
1	000.00860	COTTER PIN 3/32 X 3/4	2
2	000.03690	SCREW M8 X 40 BUTTON ZINC	2
3	000.03960	LOCKWASHER M8 ZINC	2
4	000.04283	SHOULDER 10 X 30 (M8)	1
5	000.04410	LOCKNUT M10 ZINC	2
6	000.04426	STARWASHER M10 ZINC	4
7	000.04450	FLAT WASHER NYLON 10 X 2.5T	1
8	000.05010	LOCKNUT STOVER M14 ZINC	2
9	000.05110	FLAT WASHER 0.0406 X 0.75 X 0.06	4
10	000.20065	SCREW M10 X 25 FLAT ZINC	2
11	000.20120	TIE ROD END KIT 213MM LR	1
12	000.20430	SWIVEL WHEEL ø100MM	2
13	000.20440	SWIVEL WHEEL ø100MM BRAKE	2
14	000.20606	SELF-ADHESIVE 1/4" CABLE CLAMP	2
15	221.20265	POWER BASE SHIFTER PLATE	1
16	236.20801	MAXI 500 LEFT LEG	1
17	236.20806	MAXI 500 RIGHT LEG	1
18	236.20811	MAXI 500 BASE	1
19	203.20835	SCREW BASE MAXI 500	2
20	700.20131	KIT ROD END M10 297 LR	1
21	700.20880	MAXI 500 POWER BASE ACTUATOR	1
22	000.04430	FLAT WASHER M10 ZINC (20 OD)	2

# Parts List: Boom Exploded View

---



Item #	Part #	Description (eng)	Qty
1	000.20515	BOOM CAP MAXI 500	1
2	200.20252	BOOM BUSHING	2
3	236.20220	BOOM ASSY	1

# Care and Preventive Maintenance

## Preventive maintenance schedule

The Maxi 500 is subject to wear and tear, and the following actions must be performed when specified to ensure that the product remains within its original manufacturing specification.

**WARNING:**  
 The points on this checklist are the minimum the manufacturer recommends. In some cases more frequent inspections should be carried out. Continuing to use this equipment without conducting regular inspections or continuing to use this equipment when a fault is found will seriously compromise the user and resident/patient's safety. Local regulations and standards may be higher than the manufacturers. Preventive maintenance specified in this manual can prevent accidents.

**WARNING:**  
 Service must be carried out by a qualified technician, using correct tools and knowledge of procedures. Failure to meet these requirements could result in personal injuries and/or unsafe equipment

FREQUENCY	Initially	Before every use	Every month
<b>TRANSFER (lifting and lowering)</b>	<b>0</b>	<b>Before every use</b>	<b>250</b>
<b>TO BE INSPECTED BY USER</b>			
1. Make sure that split rings are correctly fastened on the actuator pivot shaft.		<b>X</b>	
2. Make sure that the mast is fixed to the base.		<b>X</b>	
3. Verify the good functioning of the rear castor brakes.		<b>X</b>	
4. Ensure that the pivot clevis pin is well secured by the split ring and that the pivot bushings are in place (at both ends of the actuator) and in good condition.			<b>X</b>
5. Check front and rear castors regularly for hair and debris, clean when necessary. Check brake function on rear castors and attachment point to the frame.	<b>X</b>		<b>X</b>
6. Run actuator from high limit to low limit to ensure limit stops are functioning.	<b>X</b>		<b>X</b>
7. Press the emergency stop button and make sure that all electrical power is cut off and that the green power light is off.	<b>X</b>		<b>X</b>
8. Check all functions of the hand control - ensure that the hand control touch pad membrane is intact.	<b>X</b>		<b>X</b>
9. Check for the smooth function of the auxiliary UP/DOWN switches.	<b>X</b>		<b>X</b>
10. Check the function of the emergency lowering device by applying weight to the lift and activating the lowering device.			<b>X</b>



# Care and Preventive Maintenance

---

FREQUENCY	Initially	Before every use	Every month
<b>TRANSFER (lifting and lowering)</b>	<b>0</b>	<b>Before every use</b>	<b>250</b>
<b>TO BE INSPECTED BY A QUALIFIED TECHNICIAN</b>			
11. Make sure that the pivot shoulder bolt is securely fastened and the cotter pin is in place.			X
12. Inspect all weld sites for cracking or separation.			X
13. Make sure that all nuts and locknuts of the base open/close mechanism are securely fastened and the ball joints are in good condition.			X
14. Check both mast bolts to ensure they are tight. These bolts must be secured with lockwashers.			X
15. Check if the legs pivot bolts are secured with locknuts; tighten, if necessary, to stabilize leg travel.			X
16. Check battery packs for damage. Check to see if they accept charge by inserting them in the charger. Make sure that the battery has a minimum voltage of 24Vdc and no more than 28Vdc.	X		X
17. Check the charger lights (on the lift or wall charger) and verify if it is functional by inserting the battery pack. Make sure that power light (amber) is functional. Make sure that the charger has an output between 29 to 29.5Vdc.	X		X
18. Ensure that the legs are parallel to each other with the help of a square. Make sure that the legs are perpendicular at 90 degrees to the base.			X

If the product does not work as intended, immediately contact your local ARJO representative for support.

# Troubleshooting

---

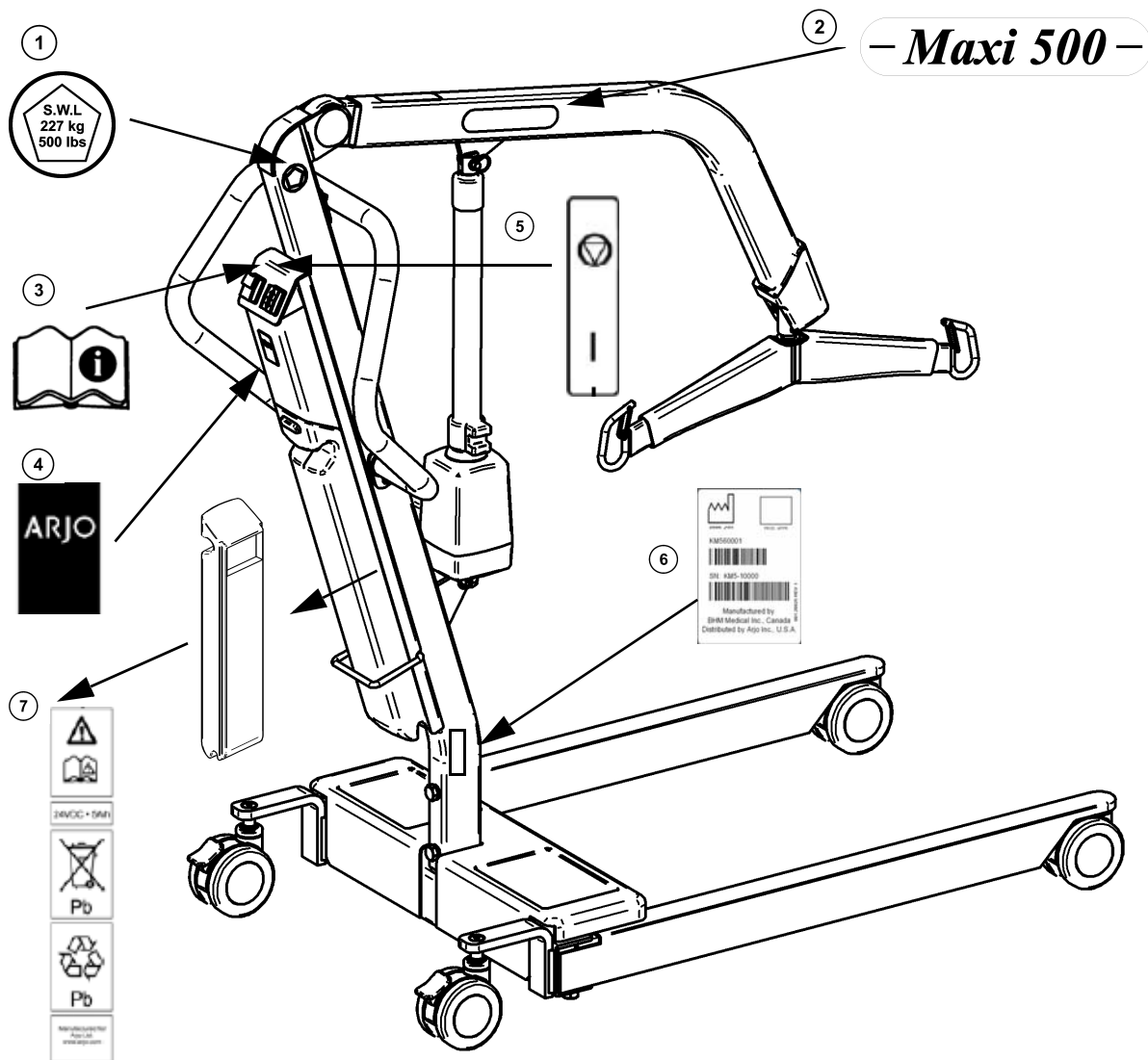
<b>Lift Trouble</b>	<b>Resolution</b>
Hand control does not respond	<ul style="list-style-type: none"> <li>• Check the red emergency stop button on the control box.</li> <li>• Check the connector on hand control cord.</li> <li>• Check the battery condition (replace with a fully charged battery pack).</li> </ul>
UP and DOWN buttons on control box do not respond	<ul style="list-style-type: none"> <li>• Check the red emergency stop button on the control box.</li> <li>• Check the battery condition (replace with a fully charged battery pack).</li> </ul>
Actuator does not respond	<ul style="list-style-type: none"> <li>• Check the red emergency stop button on control box.</li> <li>• Check if the battery are installed correctly and fully charged. Test with a new, fully-charged battery pack.</li> <li>• Check if the hand control is connected.</li> <li>• Check if the actuator is connected to the control box.</li> </ul>
Audible “beep” is heard from the control box	<ul style="list-style-type: none"> <li>• Batteries are low. Replace with a freshly charged battery pack.</li> </ul>
Actuator “stalls” during lift	<ul style="list-style-type: none"> <li>• Batteries are low. Replace with a freshly charged battery. Make sure not to exceed the lifting capacity.</li> </ul>
<b>Charger Trouble</b>	<b>Resolution</b>
“Power on” light on charger is not lit	<ul style="list-style-type: none"> <li>• Check if the charger is plugged into the wall receptacle.</li> </ul>
Charger is plugged in, but “Power on” light is not lit	<ul style="list-style-type: none"> <li>• Check there is power to the wall outlet.*</li> </ul>
Yellow indicator does not light when battery is inserted in the charger, and the green light is “ON”	<ul style="list-style-type: none"> <li>• Check batteries are properly seated in charger.</li> </ul>
<b>Battery Trouble</b>	<b>Resolution</b>
Batteries are properly seated but no lights are visible.	<ul style="list-style-type: none"> <li>• Call for service (charger may be faulty).</li> </ul>
Yellow indicator light does not go off after several hours of charging time.	<ul style="list-style-type: none"> <li>• Internal batteries need replacing. Call Arjo for replacement.</li> </ul>
Battery pack indicates it is fully charged when in the charger, but when placed in the lift, will only do a few lifts.	<ul style="list-style-type: none"> <li>• Amperage in the batteries are too low and will not take a full charge, replace batteries.**</li> </ul>

(\*) Some wall outlets are controlled by wall/light switches. Ensure power to wall outlet continues after wall/light switch is turned off.

(\*\*) Generally with low amperage, the actuator will make a humming noise, indicating insufficient battery power.

# Labels on the Lift


---



## Labels legend

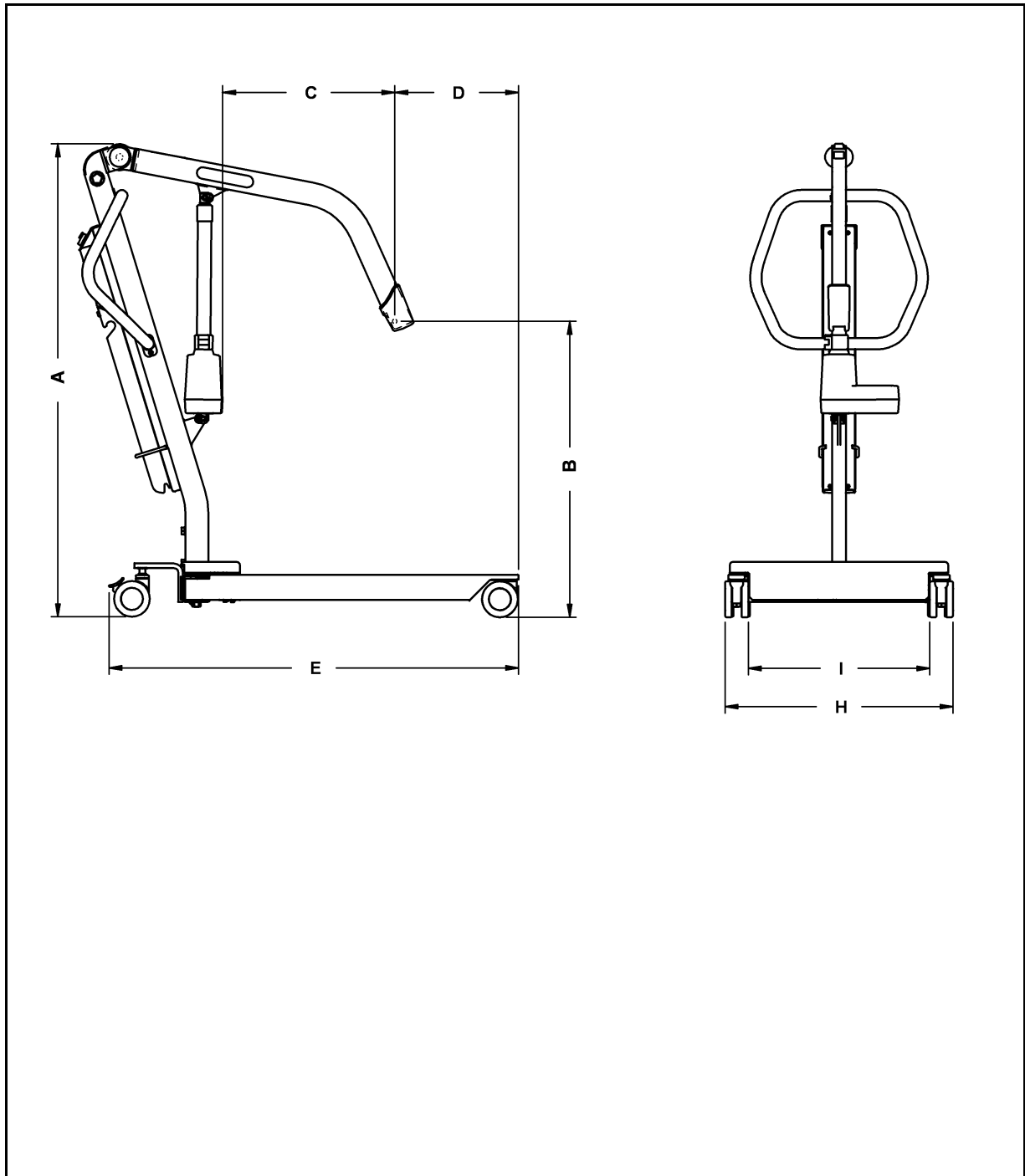
1. Safe Working Load (S.W.L.) of 227 kg (500 lb)
2. Product name
3. Read operating instructions before using the product
4. ARJO logo
5. Emergency stop and reset button identification
6. Date of manufacture, product code, serial number and manufacturer
7. Battery Information

# Technical Specifications

<b>PRODUCT INFORMATION</b>	<b>Maxi 500</b>	
Total weight	53 kg (116.6 lb)	
Lifting capacity	225 kg (500 lb)	
Battery pack weight	3.8 kg (8.4 lb)	
Total lift height (A)	Min.: 1334 mm (52.5 in) / Max.: 2072 mm (81.6 in)	 <p>Refer to the images on the following page</p>
Hoisting height at connecting points (B)	Min.: 624 mm (24.6 in) / Max.: 1876 mm (73.6 in)	
CSP Hoisting reach (C)	Min.: 493 mm (19.4 in) / Max.: 308 mm (12.1 in)	
CPSP from base end (D)	Min.: 332 mm (13.1 in) / Max.: 536 mm (21.1 in)	
Base total length (E)	1196 mm (47.1 in)	
Base height (F)	111 mm (4.4 in)	
Base floor clearance (G)	41 mm (1.6 in)	
Total external base width (legs closed) (H)	667 mm (26.3 in)	
Total external base width (legs opened) (H)	1013 mm (39.9 in)	
Total internal base width (legs closed) (I)	517 mm (20.4 in)	
Total internal base width (legs opened) (I)	923 mm (36.3 in)	
Connecting points distance (J)	537 mm (21.1 in)	
Turning radius	880 mm (34.6 in)	
Minimum door requirement	660 mm (26 in)	
IP rating control std.	IPX4	
IP rating hand remote control	IPX7	
Control voltage output (Vdc)	24	
Battery charger input (Vac)	100 to 240	
Up and Down current limiting (Amp.)	12 (+ - 1)	
Duty cycle 10%	6 min. / hour	
Sound power level (dBA)	40	
<b>DIGITAL SCALE SPECS</b>	<b>Model 1000</b>	
Weight range	180 kg (500 lb)	
Display resolution and type	0.1 kg (0.1 lb), liquid crystal display	
Accuracy	0.1% + ou - 1 digit of Reading	
Display module size	1 X 5 X 2 in (2.5 X 12.7 X 7 cm)	
Load cell size	4.5 X 2 X 1.5 (11.4 X 5.1 X 3.8 cm)	
Weight	0.45 kg (1 pound)	
Power Supply	9 volt Lithium Battery	
Battery Life	Approximately 3000 readings	
<b>OPERATION AND STORAGE CONDITIONS</b>		
Ambient temperature range (lift)	Operation: 10° to 40°C (+50 to +104 F) Storage : - 40° to 70°C (-40 to 158F)	
Ambient temperature range (batteries)	Operation: 10° to 40°C (+50 to +104 F) Storage: -15° to 40°C (+5 to +104 F)	
Relative humidity range	Operation: 30 to 75% Storage : 10 to 100%	
Atmospheric pressure range	Operation: 700 hPa to 1060 hPa Storage : 500 hPa to 1060 hPa	
<b>RECYCLING</b>		
Battery	Sealed lead-acid, rechargeable, recycleable	
Package	Cardboard recycleable	
The Lift	Separated and recycled, according to the European Directive 2002/96/EG (WEEE).	

# Technical Specifications

---



*We strongly advise and warn that only Company Designated Parts, which are designed for the purpose, should be used on equipment and other appliances supplied by the Company, to avoid injuries attributable to the use of inadequate parts.*

*The Company's Conditions of sale make specific provision confirming no liability in such circumstances.*

*Our policy is one of continuous development, and we therefore reserve the right to change specifications without notice.*

#### AUSTRALIA

ARJO Hospital Equipment Pty. Ltd.  
205 Queensport Road, Murarrie,  
Brisbane QLD 4172, Australia

PO Box 675, Bulimba  
Brisbane QLD, 4171, Australia  
Tel. (61) 7 3395 6311  
Fax. (61) 7 3395 6712  
Email: info@arjoaustralia.com.au

#### SVERIGE

ARJO SCANDINAVIA AB  
Box 61, 241 21 Eslov, Sweden  
Tel. +46 413-645 00  
Fax. +46 413-645 83  
E-post: kundservice@arjo.se

#### DANMARK

ARJO SCANDINAVIA  
Postboks 51, 4632 Bjæverskov  
Tel. 45 93 27 37  
Fax. 45 93 27 39  
E-post: kundservice@arjo.se

#### NORGE

ARJO SCANDINAVIA  
Enebakkveien 117 d, 0680 Oslo  
Tel. 98 28 11 70  
Fax. 23 05 11 99  
E-post: kundservice@arjo.se

#### BELGIQUE / BELGIË

ARJO N.V. Hospital Equipment S.A.  
Ternesselei 243  
2160 WOMMELGEM  
Tel. 03/353 91 00  
Fax. 03/353 91 01  
Email: info@arjo.be

#### CANADA

ARJO Canada Inc.  
1575 South Gateway Road  
Unit C, Mississauga, ONTARIO  
L4W 5J1  
Tel. 1 800 665 4831  
Fax. 1 800 309 1116

#### CESKÁ REPUBLIKA

ARJO Hospital Equipment s.r.o.  
Strmá 35  
CZ-616 00 BRNO  
Tel. 549 254 252  
Fax. 541 213 550

#### DEUTSCHLAND

ARJO GmbH  
Christof-Ruthof-Weg 6  
55252 Mainz-Kastel, Germany  
Tel. +49 (0)61 34-186 211  
Fax. +49 (0)61 34-186 209  
Email: info@arjo.de

#### ESPAÑA

ARJO SPAIN, S.A.  
C/ San Rafael, nº 6  
28108 ALCOBENDAS (MADRID)  
SPAIN  
Tel. +34 902 300 126  
Fax. +34 902 300 191  
Email: arjospain@arjospain.es

#### FRANCE

ARJO Equipements Hospitaliers S.A.  
45, Avenue de l'europe  
Eurocit BP133  
F-59436 RONCQ CEDEX  
FRANCE  
Tel. 03 20 28 13 13  
Fax. 03 20 28 13 14  
Email: info@arjo.fr

#### GREAT BRITAIN

ARJO.  
St. Catherine Street  
Gloucester, GL1 2SL  
ENGLAND U.K.  
Tel. (08702) 430430  
Fax. (01452) 428344

#### IRELAND

ARJO Ireland Ltd, EA House,  
Damastown Industrial Estate,  
Mulhuddart, Dublin 15, Eire  
Tel. 00 35 31 8098960  
Fax. 00 35 31 8098971

#### HONG KONG

ARJO Far East Ltd.  
1001-1003 APEC Plaza,  
49 Hoi Yuen Road, Kwun Tong,  
Kowloon, HONG KONG  
Tel. 852 2908 9553  
Fax. 852 2508 1416

#### ITALIA

ARJO Italia SPA  
Via Tor Vergata,  
432 - 00133 ROMA  
Tel. 06 87426211  
Fax. 06 87426222  
Email: promo@arjo.it

#### NEDERLAND

ARJO NEDERLAND B.V.  
De Blomboogerd 8,  
4003 BX TIEL,  
Postbus 6116,  
4000 HC TIEL  
Tel. +31 (0)344 64 08 00  
Fax. +31 (0)344 64 08 85  
Email: info@arjo.nl

#### ÖSTERREICH

ARJO GmbH, Föhrenweg 5,  
A-6065 THAUR, Austria  
Tel. +43 (0)5223 493350  
Fax. +43 (0)5223 493350 75  
Email: office@arjo.at

#### Getinge POLAND Sp. z o.o.

02-387 Warszawa  
ul. Lirowa 27  
Poland  
Tel. +48 22 882-06-26..28  
Fax +48 22 882-24-52  
Email: wysokinski@getinge.pl

#### SCHWEIZ / SVIZZERA

ARJO INTERNATIONAL AG  
Florenzstr. 1d, Postfach,  
CH-4023 BASEL, Switzerland  
Tel. +41 (0)61 337 9797.  
Fax. +41 (0)61 331 4780  
Email: arjo.international@arjo.com

#### SCHWEIZ

ARJO-SIC AG  
Florenzstr. 1d, Postfach  
4023 BASEL  
Tel. +41 (0)61 337 97 77  
Fax. +41 (0)61 311 97 42  
Email: arjo.sic@arjo.ch

#### USA

ARJO, Inc.  
50 North Gary Avenue  
Roselle, IL 60172  
Tel. 1-800-323-1245  
Fax. 1-888-594-ARJO(2756)

# ARJO

If your country is not listed here, please contact your local distributor, or Arjo International AB, Box 61, S-241 21 ESLÖV, SWEDEN.  
Tel +46 413 64500. Fax + 46 413 555586.

