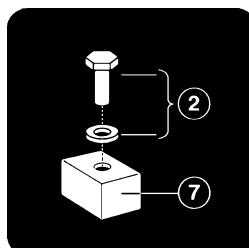


ARJO  
ARJO

# *Minstrel*<sup>TM</sup>



## *Parts List*



HMX 15070.GB  
Issue 2  
Mar. 2001

# A Mast, Actuator and Electrics

---

**Note:** Some of the components listed may not be available individually as spares and only supplied in the form of sub-assemblies.

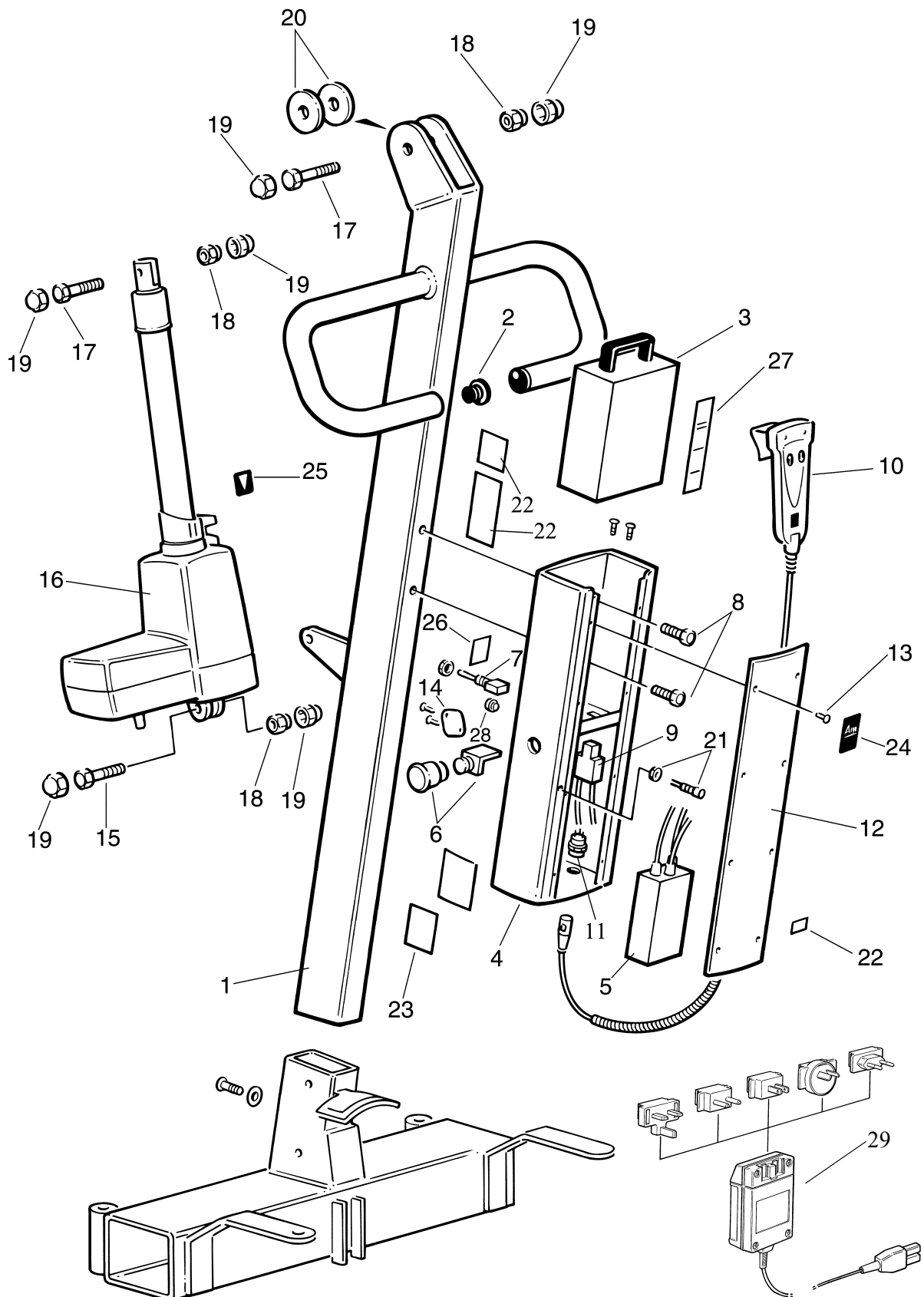
**Note:** Always quote Serial number of hoist, and specify Quantity, Part Number, description and colour (if applicable) when ordering spares.

**Note:** References to left hand and right hand described in this text unless otherwise stated are as viewed from the rear of the Lifter.

**Note:** In label numbers listed below \*\* represents the country code.

<b>Item</b>	<b>Part Number</b>	<b>Qty</b>	<b>Description</b>
1	HMX00280.01	1	Mast
2	HMX00290.0	2	End Cap 26mm dia PVC
3	HMX00310.0	1	Battery pack
4	HMX00330.02	1	Compartment unit – battery / electronics
5	HMX00340.0	1	Electronic unit
6	HMX00350.0	1	Emergency stop button and switch
7	HMX00360.0	1	Dual control switch
8	HMX00370.0	2	Bolt M10 x 20mm long hex. Socket
9	HMX00390.0	1	Plug- Chassis
10	KTX00890.0	1	Handset
11	HMX00410.0	1	Chassis connector for handset
12	HMX00420.02	1	Cover plate
13	HMX00430.0	10	Screw M5 x 4mm long
14	HMX00440.02	1	Cover Plate
15	HMX00450.0	1	Bolt M10 x 45mm long
16	HMX00460.0	1	Actuator
17	HMX00510.0	2	Bolt M10 x 60mm long
18	HMX00530.0	3	Locknut M10
19	HMX00640.0	6	Cap M10
20	HMX00550.0	2	Washer dia 40/10.5 x 2mm thick
21	HMX00670.0	1	L.E.D Indicator- low battery
22	HMX90000.**	1	Labels- set
23	Not a spare	1	Label- serial number
24	KGX00690.0	1	Label- Arjo
25	KRX05070.0	1	Label- system failure lower override
26	HMX15040.0	1	Label- Dual control identification
27	KPX01750.0	1	Label- Read op.inst/recycling
28	HMX00700.0	1	Blanking plug
29	HMA0010-GB	A/R	Battery charger (as applicable)
	HMA0010-EU	A/R	Battery charger (as applicable)
	HMA0010-US	A/R	Battery charger (as applicable)
	HMA0010-AU	A/R	Battery charger (as applicable)
	HMA0010-CH	A/R	Battery charger (as applicable)

# A Mast, Actuator and Electrics



P1377, mp1477b

# B Jib and Spreader Bar

---

**Note:** Some of the components listed may not be available individually as spares and only supplied in the form of sub-assemblies.

**Note:** Always quote Serial number of hoist, and specify Quantity, Part Number, description and colour (if applicable) when ordering spares.

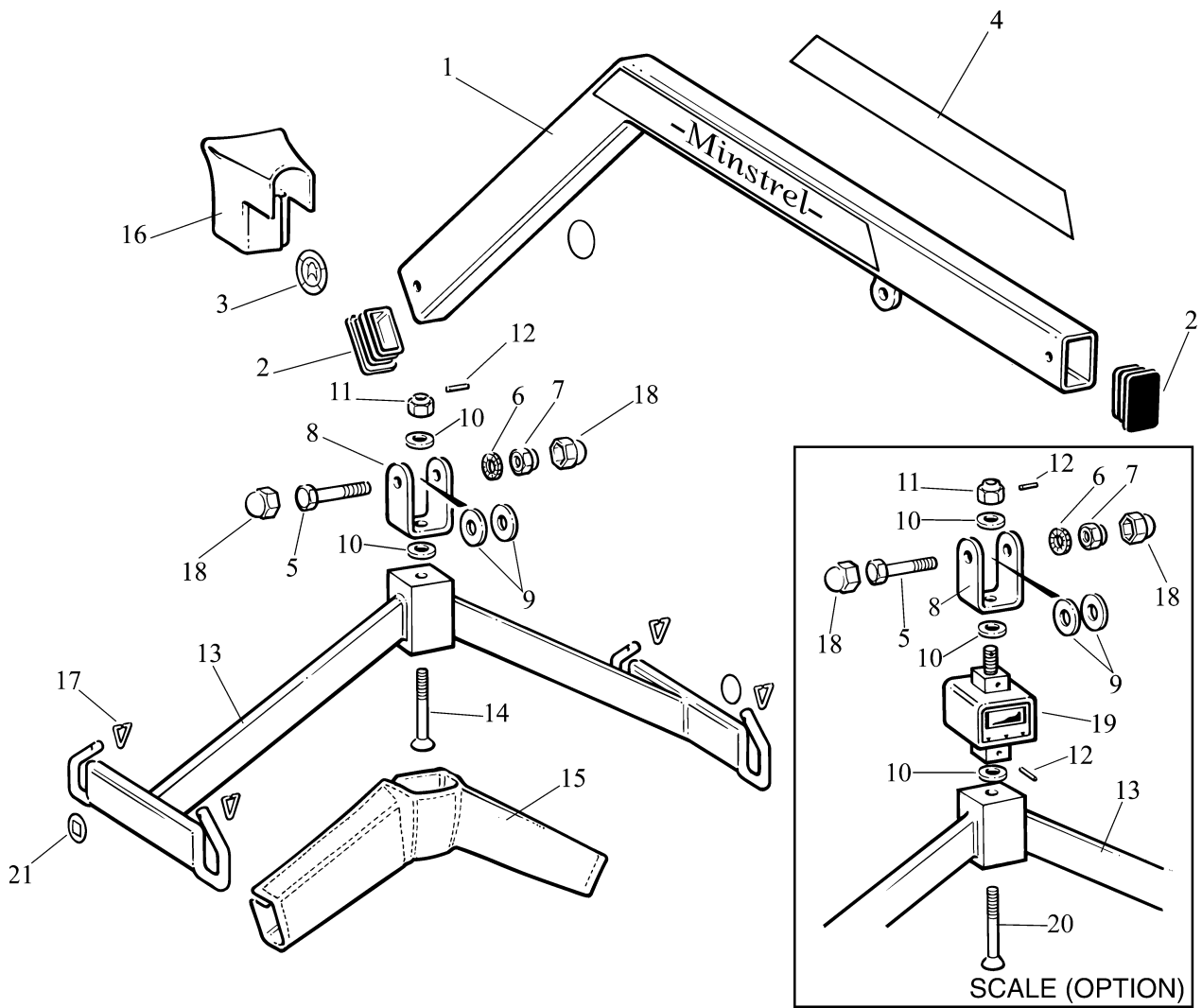
**Note:** References to left hand and right hand described in this text unless otherwise stated are as viewed from the rear of the Lifter.

**Note:** In label numbers listed below \*\* represents the country code.

<b>Item</b>	<b>Part Number</b>	<b>Qty</b>	<b>Description</b>
1	HMX00470.01	1	Jib
2	HMX00480.0	2	Cap dia 50 / 30 x 3mm thick
3	LBX02460.0	2	Label - sling size guide
4	HMX15010.0	2	Label - Minstrel
5	HMX00510.0	1	Bolt M10 x 60mm long
6	HMX00520.0	1	Washer M10
7	HMX00530.0	1	Lock Nut M10
8	HMX00540.0	1	U-joint
9	HMX00550.0	2	Washer dia 40 / 10.5 x 2mm thick
10	HMX00560.0	2	Spring washer dia 25 / 12.2 x 1.5mm thick
11	HMX00570.0	1	Nut M12 - special
12	HMX00580.0	1	Tension Pin M3 x 24mm long (Qty 2 when scale fitted)
13	HMX00590.0	1	Spreader Bar
14	HMX00600.0	1	Bolt M12 x 70mm long Csk.
15	HMX00610.0	1	Cover - padded (spreader bar)
16	HMX00620.0	1	Cover - Padded padded (jib end)
17	HMX00630.0	4	Clip – sling retaining
18	HMX00640.0	2	Cap M10
19	HMX15000.0	1	Scale unit (if fitted)
20	HMX00660.0	1	Bolt M12 x 75mm long
21	KRX015600.0	2	Label – S.W.L. 160kg (350lbs)

# B Jib and Spreader Bar

P1378



# C Chassis Leg Opening Pedal Assembly

---

**Note:** Some of the components listed may not be available individually as spares and only supplied in the form of sub-assemblies.

**Note:** Always quote Serial number of hoist, and specify Quantity, Part Number, description and colour (if applicable) when ordering spares.

**Note:** References to left hand and right hand described in this text unless otherwise stated are as viewed from the rear of the Lifter.

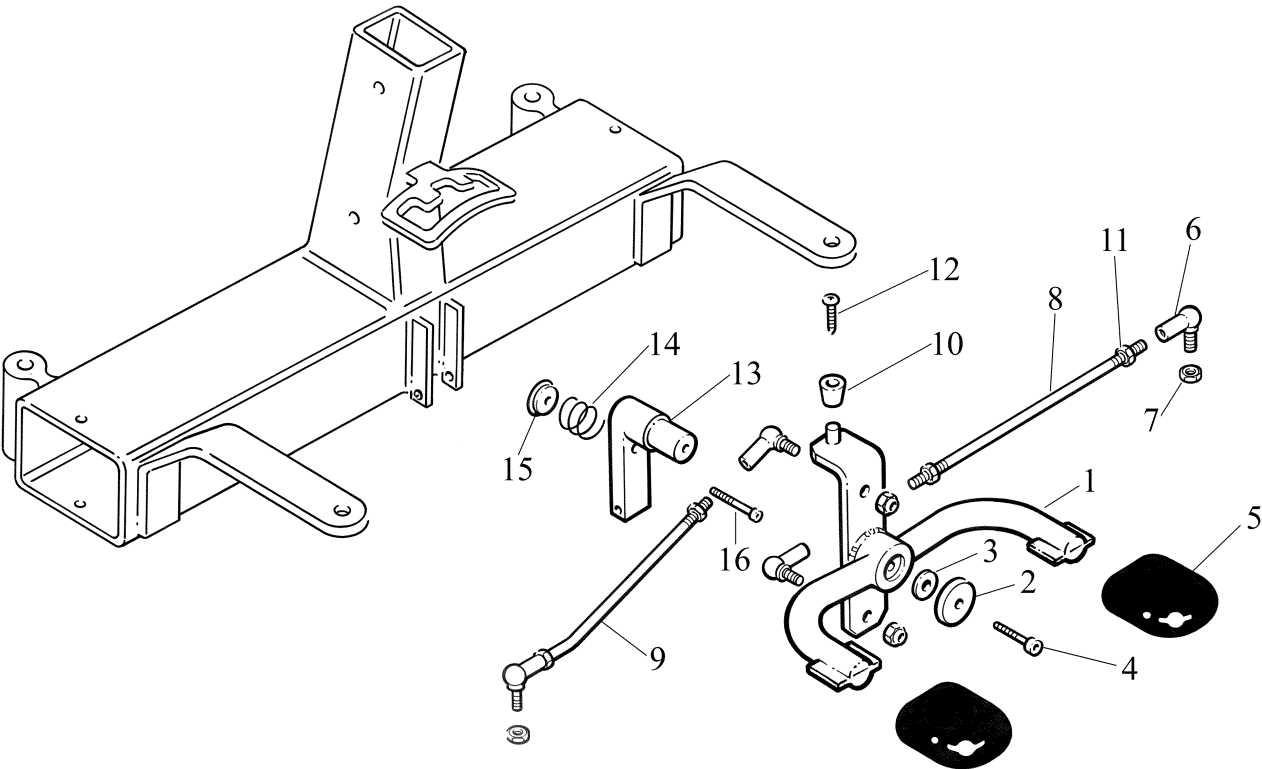
**Note:** In label numbers listed below \*\* represents the country code.

<b>Item</b>	<b>Part Number</b>	<b>Qty</b>	<b>Description</b>
1	HMX00120.01	1	Pedal assembly
2	HMX00130.0	1	Cap 32mm dia x 5mm
3	HMX00140.0	1	Cap 24mm dia x 2mm
4	HMX00150.0	1	Bolt M8 x 16 mm long
5	HMX00160.0	2	Pedal cover – rubber
6	HMX00170.0	4	Ball joint
7	HMX00180.0	4	Lock nut M8
8	HMX00190.0	1	Tie bar
9	HMX00200.0	1	Tie Bar (bent)
10	HMX00210.0	1	Bearing
11	HMX00220.0	4	Nut M8
12	HMX00230.0	1	Bolt M5 x 8 mm long
13	HMX00240.0	1	Pedal Holder
14	HMX00250.0	1	Spring
15	HMX00260.0	1	Lock Nut M8 ‘special’
16	HMX00270.0	1	Bolt M8 x 50mm long hex. socket

# C Chassis Leg Opening Pedal Assembly

---

P1379



# D Chassis

---

**Note:** Some of the components listed may not be available individually as spares and only supplied in the form of sub-assemblies.

**Note:** Always quote Serial number of hoist, and specify Quantity, Part Number, description and colour (if applicable) when ordering spares.

**Note:** References to left hand and right hand described in this text unless otherwise stated are as viewed from the rear of the Lifter.

**Note:** In label numbers listed below \*\* represents the country code.

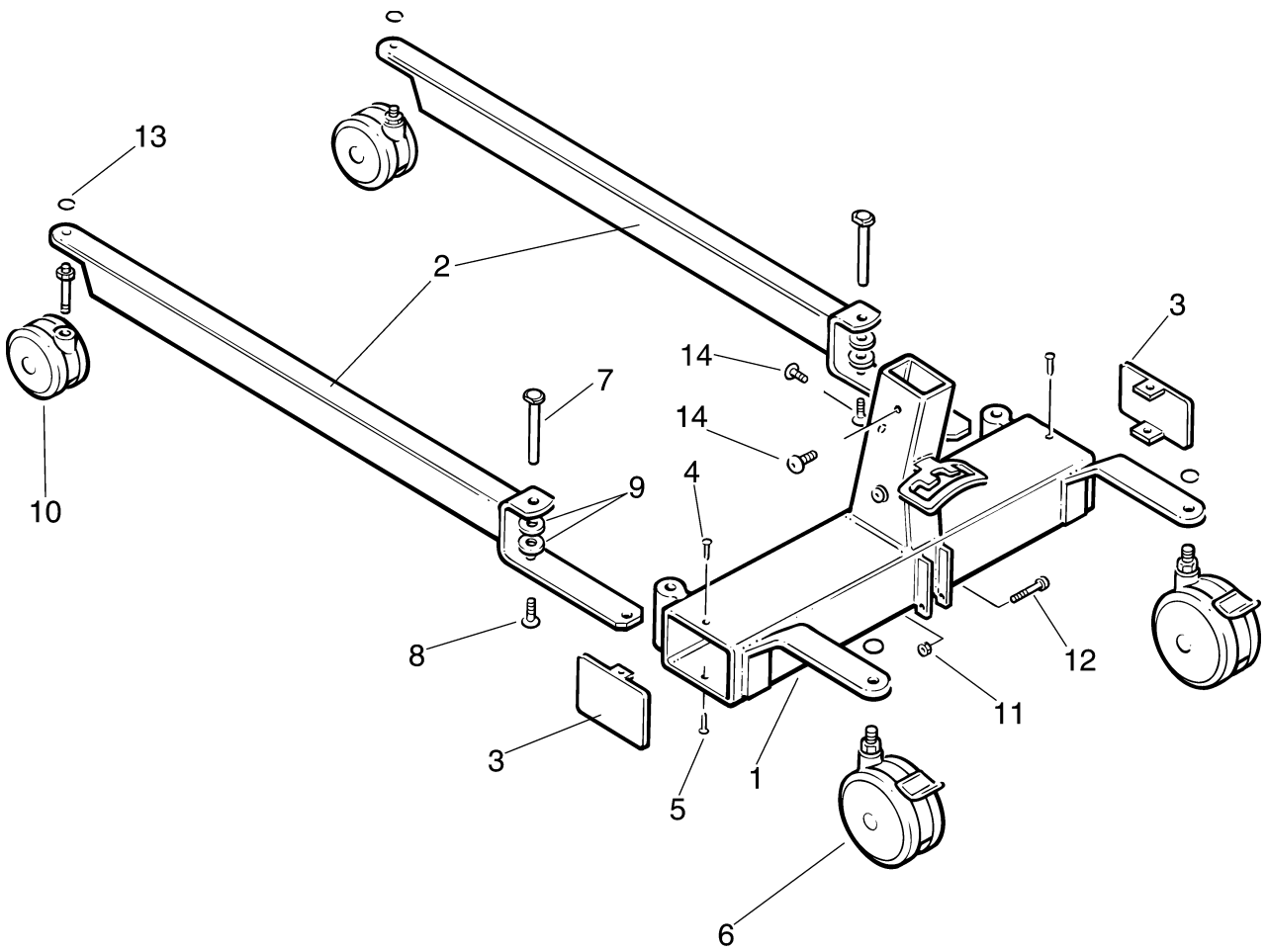
<b>Item</b>	<b>Part Number</b>	<b>Qty</b>	<b>Description</b>
1	HMX00010.01	1	Chassis assembly
2	HMX00020.01	2	Chassis Leg
3	HMX00030.01	2	Cover Plate
4	HMX00040.0	2	Screw Rd.hd - End Cover Plate – upper 4,8 x 16mm long
5	HMX00050.0	2	Screw Csk.hd - End Cover Plate – lower 4,8 x 16mm long
6	KTX00911.04	2	Rear Castor 125 mm dia – braked
7	HMX00070.0	2	Bolt bearing
8	HMX00080.0	2	Bolt M10 x 20 mm long
9	HMX00090.0	4	Ball bearing
10	KTX00541.04	2	Front Castor mm dia 75 – double unbraked
11	HMX00180.0	1	Lock Nut M8
12	HMX00270.0	1	Bolt M8 x 50mm long hex. socket
13	KTX00280.0	4	Cover Disc
14	HMX00680.0	3	Screw - mast fixing M10 x 20mm long



# D Chassis

---

P1380



# Notes

---

# Notes

---

AUSTRALIA  
Arjo Hospital Equipment Pty. Ltd.,  
154 Lytton Road  
Bulimba  
Brisbane  
QLD, 4171  
Tel. (61) 7 3395 6311  
Fax. (61) 7 3395 6712

BELGIQUE / BELGIË  
Arjo Hospital Equipment nv/sa  
45, avenue de l'europe  
Eurocit  
F-59435 RONCQ CEDEX  
FRANCE  
Tel: +33 3 20 28 13 13  
Fax: +33 3 20 28 13 14  
Email: info@arjo.be

CANADA  
Arjo Canada Inc.  
1575 South Gateway Road  
Unit C  
Mississauga, ONTARIO  
L4W 5J1  
Tel. 1 800 665 4831  
Fax. 1 800 309 1116

ČESKÁ REPUBLIKA  
Arjo Hospital Equipment s.r.o.  
Strmá 35  
CZ-616 00 BRNO  
Tel. 05 754 252  
Fax. 05 412 13550

DANMARK  
Getinge-Arjo A/S  
Firskovvej 23  
DK-2800 KGS Lyngby  
Tel. 45 93 27 27  
Fax. 45 93 41 20  
Getinge.arjo@getznet.dk

DEUTSCHLAND  
Arjo Systeme für Rehabilitation GmbH  
Rudolf-Diesel-Strasse 5  
65719 HOFHEIM-WALLAU  
Tel. 6122 8040  
Fax. 6122 804160  
E-Mail : info@arjo.de  
www.arjo.com

ESPAÑA  
Arjo SPAIN, S.A.  
Vallespir, 13  
08970 Sant Joan Despi.  
Barcelona  
SPAIN  
Tel. 00 34 93 477 3733  
Fax. 00 34 93 477 3732

FRANCE  
ARJO Equipments Hospitaliers sa  
45, avenue de l'europe  
urocit  
F-59435 RONCQ CEDEX  
FRANCE  
Tel: +33 3 20 28 13 13  
Fax: +33 3 20 28 13 14  
Email: info@arjo.be

GREAT BRITAIN  
Arjo Ltd.,  
St. Catherine Street  
Gloucester, GL1 2SL  
ENGLAND U.K.  
Tel. (08702)430430  
Fax. (01452) 428344

HONG KONG  
Arjo Far East Ltd.  
1001-3 APEC Plaza,  
49 Hoi Yuen Road,  
Kwun Tong, Kowloon,  
HONG KONG  
Tel. 852 2508 9553  
Fax. 852 2508 1416

ITALIA  
Arjo Italia S.p.A.  
Via Della Marcigliana, 532  
(Cancello 9)  
00139 ROMA  
Tel. 06 8712 7023  
Tel. 06 8712 7025  
Fax. 06 8712 0640

NORGE  
Getinge-Arjo AS  
Ole Deviksvet 4  
0666 OSLO  
Tel. 2305 1127  
Fax. 2305 1199

NEDERLAND  
ARJO NEDERLAND B.V.  
De Blomboogerd 8  
4003 BX TIEL  
Postbus 6116  
4000 HC TIEL  
Tel. 0344 640 800  
Fax. 0344 640 885

ÖSTERREICH  
Arjo GmbH  
Föhrenweg 5  
A-6065 THAUR  
Tel. 05223 493350  
Fax. 05223 49335075

POLSKA  
Arjo Poland Sp.zo.o.,  
ul. Walecznych 44,  
03-916 WARSZAWA  
Tel. 22 616 2916  
Fax. 22 617 7601

SCHWEIZ / SVIZZERA  
Arjo-Sic AG  
Wartenbergstrasse 15  
Postfach 4020  
BASEL  
Tel. 061 317 9797  
Fax. 061 311 9742

SVERIGE  
Arjo Sverige AB  
Box 61, 241 21 Eslöv  
Tel. 0413-645 00  
Fax. 0413-645 83  
E-post: kundservice@arjo.se  
www.arjo.com

USA  
Arjo, Inc.  
50 North Gary Avenue  
Roselle, IL 60172  
Tel. 1-800-323-1245  
Fax. 1-888-594-ARJO(2756)  
www.arjousa.com



[www.Arjo.com](http://www.Arjo.com)

If your country is not listed here, please contact your local distributor, or ARJO  
International AB, Box 61, S-241 21 ESLÖV, SWEDEN.  
Tel +46 413 64500. Fax + 46 413 555586.



FM 21964  
ISO 9001 • BS 5750 Part 1 • EN 29001  
ARJO Limited • GLOUCESTER • U.K.