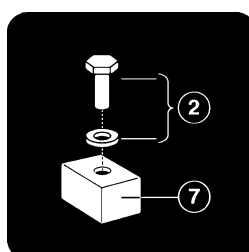


*Sarita*<sup>TM</sup>



## *Parts List*



KKX 20620.GB

Issue 3

Jan. 2004

# Introduction

© ARJO Med. AB LTD

ARJO products are patented or patent pending. Patent information is available by contacting ARJO Med. AB LTD.

Our policy is one of continuous development and we therefore reserve the right to make technical alterations without notice. The content of this publication may not be copied either whole or in part without the consent of ARJO Med. AB LTD.

ARJO Med. AB LTD. strongly advise and warn that only ARJO Company Designated Parts, which are designed for the purpose, should be used on equipment and other appliances supplied by ARJO, to avoid injuries attributable to the use of inadequate parts

Un-authorised modifications on any ARJO Med. AB LTD. equipment may affect it's safety and are in breach of any warranty on it. ARJO Med. AB LTD. will not be held responsible for any accidents, incidents or lack of performance that occur as a result of any un-authorised modification to it's products.

The ARJO Company's Conditions of sale make specific provision confirming no liability in such circumstances

Product names are a trademark of the ARJO Group.

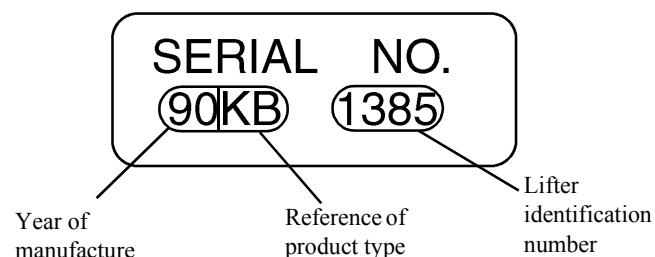
The vertical and horizontal lines printed in the margins adjacent to the text/illustrations in these instructions are for ARJO use only and should be disregarded by the reader.

Some of the information contained in these instructions may become outdated, due to improvements made to the product in the future. If you have any questions regarding these instructions or your lifter, please contact ARJO or their approved distributor.

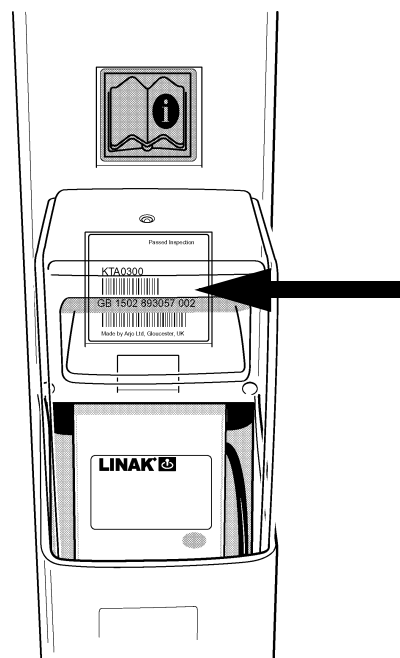
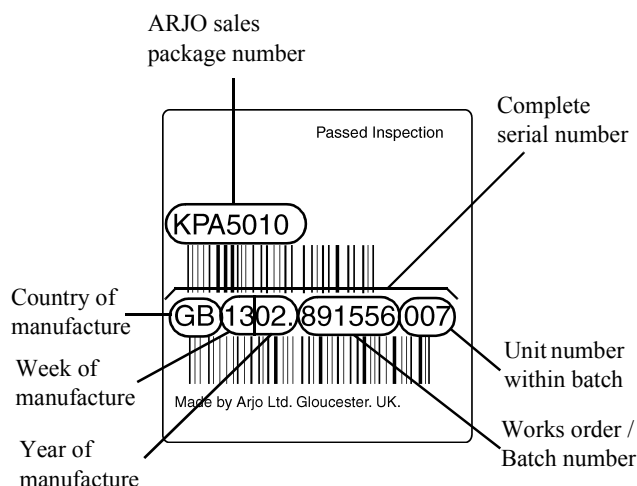
When ordering spare parts it may be necessary to quote the main lifter serial number this number is to be found on the 'bar code' label.

The date of manufacture is shown in the first 6 digits of the serial number. On machines with 15 digit serial numbers the date is shown as e.g. GB1302 981556 007. (GB = country of manufacture, 13 = 13th week of that year and 02= year 2002), the remaining digits, are the machine identification number.

## Serial Number Label up to November 1994



## Serial Number Label: Bar code type from November 1994 onwards.



Note: Bar code labels shown are only typical and not specific to this product.

# Contents

---

	SECTION	Page No.
A	Actuator, Lifting Arms and Kneepad .....	4-7
B	Chassis Assembly .....	8-11
C	Covers and Foot Support.....	12-15
D	Electrics .....	16-19
E	Slings .....	20-21

# A - Actuator, Lifting Arms and Kneepad

**Note:** Always quote Serial number of lifter, and specify Quantity, Part Number, description and colour (if applicable) when ordering spares.

**Note:** \*\* in listed part number refers to country code

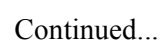
**Note:** .XX in listed part number refers to colour code suffix

Key to colour suffix: .04 - White, .06 - Beige, .11 - Lilac, .16 - Sapphire blue, .20 - Grey, .21 - Dark Green, .23 - Yellow, .25 - bright Green

Item	Part Number	Qty	Description
1	AX01201.0	2	Locknut, thin, M10
2	AX12110.0	2	Washer, M10
3	KTX50810.0	1	Screw skt set M6 x 10
4	CX15360.0	1	Tension Pin, 4mm diameter x 24mm long
5	EX40300.0	6	Washer, 8mm I/D
6	EX40360.0	2	Locknut, M8
7	KKX10400.0	1	Kneepad
8	KKX20080.0	2	Lift Knob
9	KKX22070.04	1	Rear Link
10	KKX20110.0	2	Knob
11	KKX22100.11	1	Wishbone - Lilac
	KKX22100.16	1	Wishbone - Sapphire blue
12	KKX20230.0	2	Handle and Arm
13	KKX20260.0	1	Shaft
14	KKX20270.0	2	Washer, formed
15	KKX20350.0	2	Tension Pin, 8mm diameter x 35mm long
16	KKX20360.0	2	Plug
17	KKX20301.0	1	Actuator assembly, (Linak) if fitted
	KKS20370.0	1	Actuator assembly 8 amp Sarita 140, (Linak) if fitted
	KKS20300.0	1	Actuator assembly, (Magnetic) if fitted
18	KKX20430.0	1	Pin, rear link
19	KKX20440.0	2	Plastic Bush
20	KKX21250.0	1	Mounting Bracket
21	KKX21260.0	1	Mounting Plate
22	KKX21290.0	1	Clamp Plate
23	KKX21400.0	1	Screw, socket button head, M8 x 15mm long
24	KKX21410.0	1	Hexagon Bolt, M10 x 55mm long
25	KKX21470.0	2	Plug
26	KTX22270.0	2	Pin
27	KTX01890.0	8	Locknut, thin, M5
28	KTX01901.0	8	Screw, socket cap head, M5 x 90mm long
29	KTX02510.0	1	Pin
30	KTX02560.0	1	Plastic Bush
31	KTX05120.0	1	Clevis mounting plate
	KTX22260.0	1	Clevis mounting plate 8 amp Sarita 140
32	KKX11700.0	1	Cable retainer (not illustrated)
38	KTX02530.0	1	Pin (up to serial no. GB2796772237001)
39	BX07950.0	1	Tension pin 3mm dia x 16mm long
	KKS1002		linak 140kg actuator and associated parts (no covers)
	KKS1019		linak 160kg actuator and associated parts (no covers)

Continued...

## p1080/3 mP1080/9



# A - Actuator, Lifting Arms and Kneepad

---

**Note:** Always quote Serial number of lifter, and specify Quantity, Part Number, description and colour (if applicable) when ordering spares.

**Note:** \*\* in listed part number refers to country code

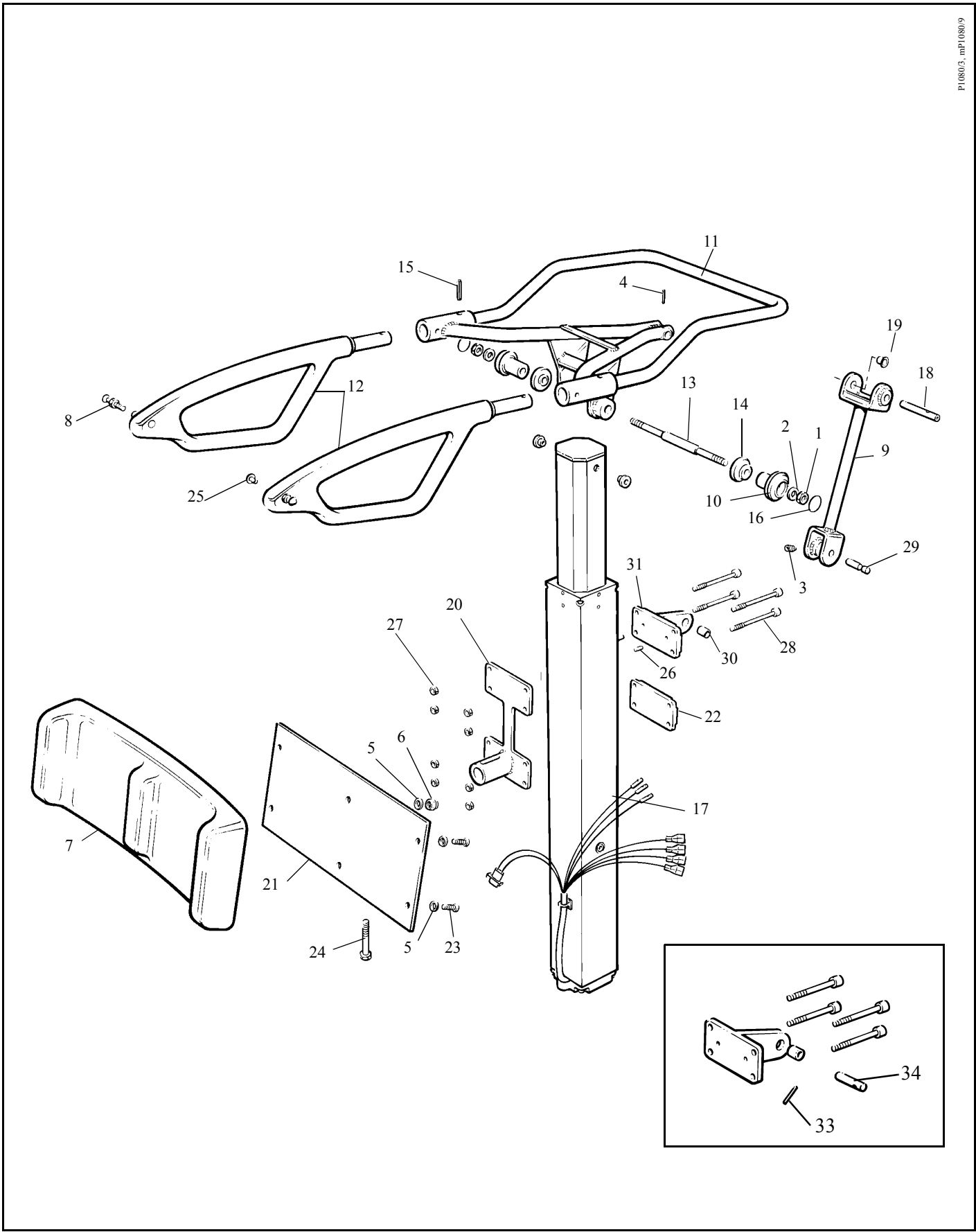
**Note:** .XX in listed part number refers to colour code suffix

Key to colour suffix: .04 - White, .06 - Beige, .11 - Lilac, .16 - Sapphire blue, .20 - Grey, .21 - Dark Green, .23 - Yellow, .25 - bright Green

Item	Part Number	Qty	Description
	KKS 1001 .....		Spares package - Sarita 140 Actuator kit complete (8.0 amps) Comprising items 17, 20, 22, 26x2, 27x8, 28x8, 30, 31, 32
	See also		“Covers and Foot Support” section in this manual
	See also		“Electrics” section in this manual
	KKS 1002 .....		Spares package - Sarita 140 Actuator kit (8.0 amps) Comprising items 3, 17, 20, 22, 26x2, 27x8, 28x8, 30, 31, 32
	See also		“Covers and Foot Support” section in this manual
	See also		“Electrics” section in this manual
	KKS 1011 .....		Spares package - Sarita 160 Handle assembly, (handed) Comprising items 8, 12, 15, 25
	KKS 1022 .....		Spares package - Sarita 160 Handle assembly, (handed) Comprising items 8, 12, 15, 25
	KKS 1012 .....		Spares package - Sarita 160 Wishbone assembly - Lilac
	KKS 1013 .....		Spares package - Sarita 160 Wishbone assembly - Sapphire blue
			Comprising items 8x2, 11, 12x2, 15x2, 25x2
	See also		“Covers and Foot Support” section in this manual
	KKS 1014 .....		Spares package - Sarita 160 kneepad assembly Comprising items 5x6, 6x2, 7, 21, 23x4, 24
	See also		“Covers and Foot Support” section in this manual
	KKS 1015 .....		Spares package - Sarita 160 knob and shaft assembly Comprising items 1x2, 2x2, 10x2, 13, 14x2, 16x2
	KKS 1019 .....		Spares package - Sarita 160 Actuator kit (9.6 amps) Comprising items 3, 17, 20, 22, 26x2, 27x8, 28x8, 30, 31, 32
	See also		“Covers and Foot Support” section in this manual
	See also		“Electrics” section in this manual
	KKS 1023 .....		Spares package - Sarita 160 Actuator kit complete (9.6 amps) Comprising items 17, 20, 22, 26x2, 27x8, 28x8, 30, 31, 32
	See also		“Covers and Foot Support” section in this manual
	See also		“Electrics” section in this manual

# A - Actuator, Lifting Arms and Kneepad

P1080/3, mP1080/9



# B - Chassis Assembly

---

**Note:** Always quote Serial number of lifter, and specify Quantity, Part Number, description and colour (if applicable) when ordering spares.

**Note:** \*\* in listed part number refers to country code

**Note:** .XX in listed part number refers to colour code suffix

Key to colour suffix: .04 - White, .06 - Beige, .11 - Lilac, .16 - Sapphire blue, .20 - Grey, .21 - Dark Green, .23 - Yellow, .25 - bright Green

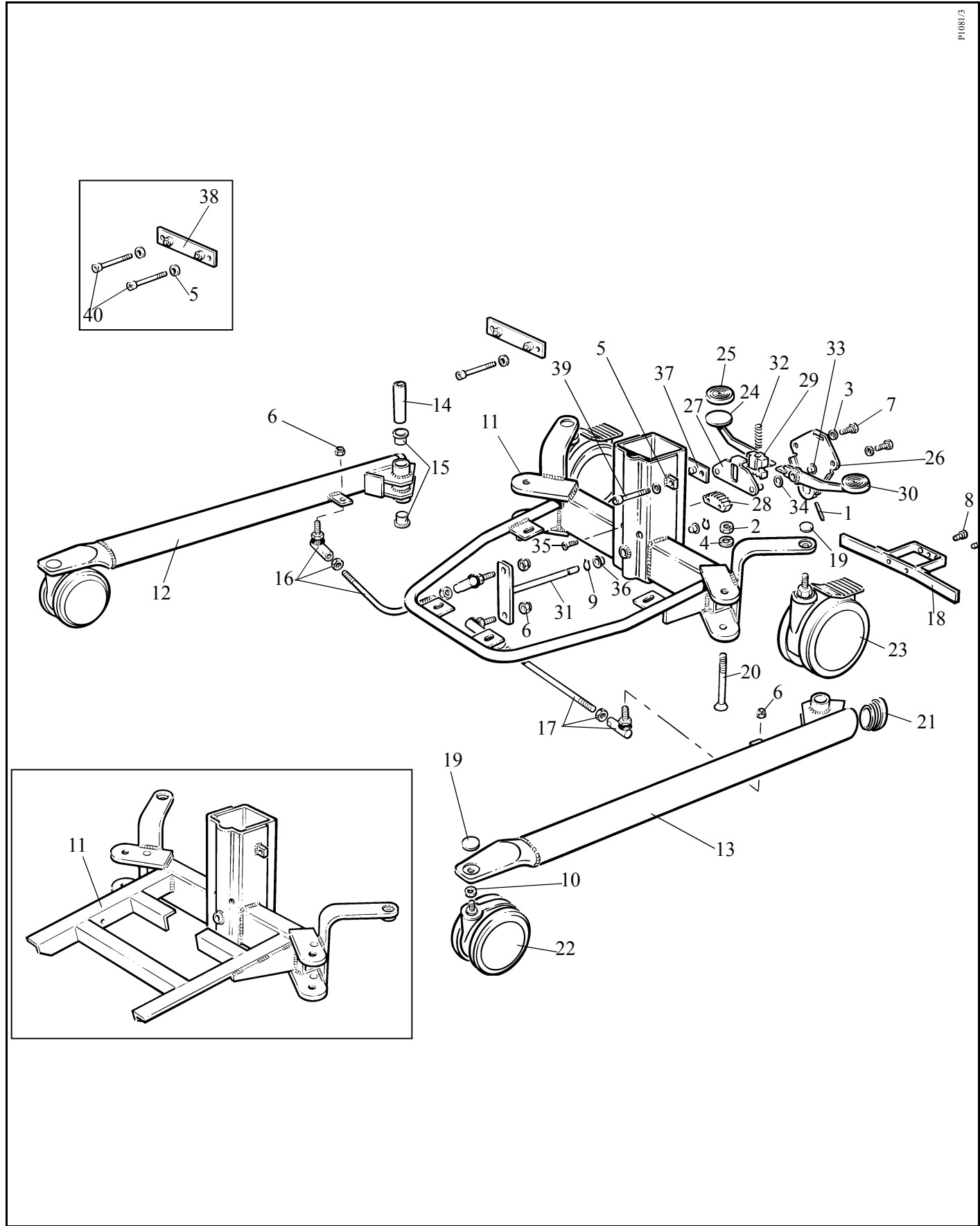
Item	Part Number	Qty	Description
1	BX07110.0	1	Tension Pin, 5mm diameter x 30mm long
2	EX45250.0	2	Nut, thin M12
3	EX40290.0	2	Washer, 6mm I/D
4	EX40320.0	2	Washer, 12mm I/D
5	EX40330.0	2	Washer, self locking, 6mm I/D
6	EX40360.0	4	Nut, self locking, M8
7	EX41770.0	2	Screw, hexagon head, M6 x 16mm long
8	KKX10910.0	3	Screw, pozi pan head M6 x 10mm long
9	EX61150.0	2	Circlip - external
10	KKX53030.0	2	Washer, M10
11	KKX21000.04	1	Chassis
	KKX22020.04	1	Chassis (The Netherlands only)
12	KKX21080.04	1	Leg, (handed)
13	KKX21090.04	1	Leg, (handed)
14	KKX21100.0	2	Leg Spacer
15	KKX21110.0	4	Plastic Bush
16	KKX21120.0	1	Link Assembly, (handed) (bent)
17	KKX21130.0	1	Link Assembly, (handed)
18	KKX21330.0	1	Bracket Assembly
19	KTX00280.0	2	Cap - Castor
20	KTX00350.0	2	Screw, socket countersunk head, M12 x 90mm long
21	KTX00460.0	2	End Cap
22	KTX00541.04	2	Castor - white
23	KTX00911.04	2	Castor (braked) - white
24	KKX22120.04	1	Pedal, (handed)
25	KTX01210.0	2	Pedal Cover
26	KTX01240.0	1	Plate
27	KTX01250.0	1	Plate
28	KTX01290.0	1	Gear - Static
29	KTX01300.0	1	Gear - Moving
30	KKX22110.04	1	Pedal, (handed)
31	KTX01360.0	1	Shaft
32	KTX01390.0	1	Spring
33	KKX22200.0	2	Bush
34	KKX22210.0	2	Washer
35	KTX01430.0	2	Screw, socket countersunk head, M6 x 15mm long
36	KTX01880.0	2	Bush
37	KTX05160.0	1	Clamp Pad (original build only)
38	KTX05200.0	1	Clamp pad (dimpled)(spares only)
39	KTX05190.0	2	Screw, socket cap head, M6 x 50mm long (original build
40	LBX01310.0	2	Screw, socket cap head, M6 x 55mm long(spares only)

Continued...



# B - Chassis Assembly

P1081/3



Continued...

# B - Chassis Assembly

---

**Note:** Always quote Serial number of lifter, and specify Quantity, Part Number, description and colour (if applicable) when ordering spares.

**Note:** \*\* in listed part number refers to country code

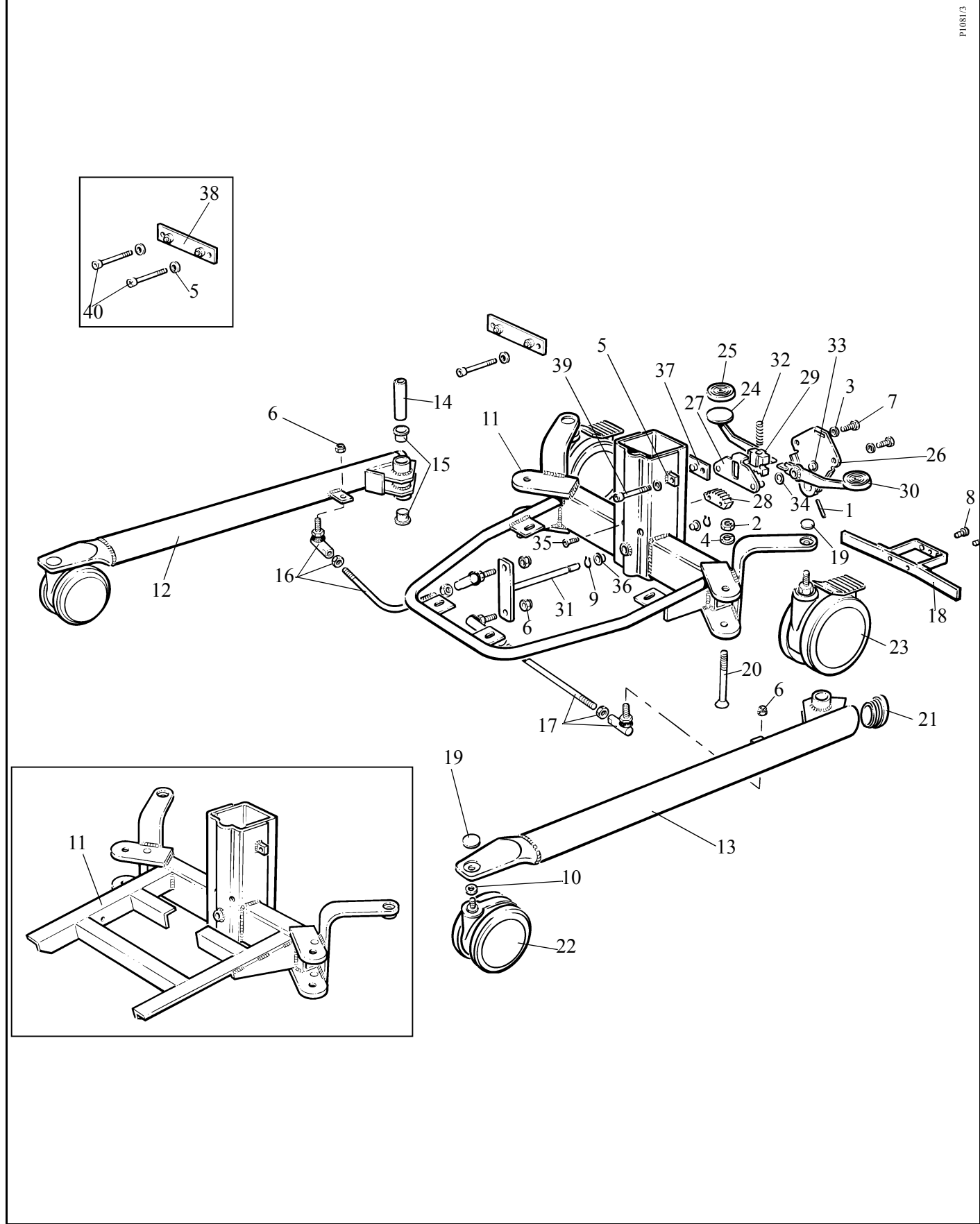
**Note:** .XX in listed part number refers to colour code suffix

Key to colour suffix: .04 - White, .06 - Beige, .11 - Lilac, .16 - Sapphire blue, .20 - Grey, .21 - Dark Green, .23 - Yellow, .25 - bright Green

Item	Part Number	Qty	Description
	KKS 1003 .....		Spares package - Sarita chassis assembly Comprising items 1, 2x2, 3x2, 4x2, 6x4, 7x2, 9x2, 11, 12, 13, 14x2, 15x4, 16, 17, 18, 19x4, 20x2, 21x2, 22x2, 23x2, 24, 25x2, 26, 27, 28, 29, 30, 31, 32, 33x2, 34x4, 35x2, 36x2
	See also		“Covers and Foot Support” section in this manual
	KKS 1006 .....		Spares package - Sarita chassis with Dutch footboard Comprising items 1, 2x2, 3x2, 4x2, 5x2, 6x4, 7x2, 9x2, 10x2, 11, 12, 13, 14x2, 15x2, 16, 17, 18, 19x4, 20x2, 21x2, 22x2, 23x2, 24, 25x2, 26, 27, 28, 29, 30, 31, 32, 33x2, 34x4, 35x2, 36x2, 38, 40x2
	See also		“Covers and Foot Support” section in this manual
	KKS 1007 .....		Spares package - Sarita 160 pedal assembly Comprising items 1, 3x2, 7x2, 9x2, 24, 25x2, 26, 27, 28, 29, 30, 32, 33x2, 34x4, 35x2
	KKS 1008 .....		Spares package - Sarita 160 chassis assembly Comprising items 1, 2x2, 3x2, 4x2, 5x2, 6x4, 7x2, 8x3, 9x2, 10x2, 11, 12, 13, 14x2, 15x4, 16, 17, 18, 19x4, 20x2, 21x2, 22x2, 23x2, 24, 25x2, 26, 27, 28, 29, 30, 31, 32, 33x3, 34x4, 35x2, 36x2, 38, 40x2
	See also		“Covers and Foot Support” section in this manual
	KKS 1009 .....		Spares package - Sarita 160 Foot support moulding assembly Comprising items 8x3, 18
	See also		“Covers and Foot Support” section in this manual
	KKS 1010 .....		Spares package - Sarita 160 Leg assembly (pair) Comprising items 4x2, 10x2, 12, 13, 14x2, 15x4, 19x2, 20x2, 21x2, 22x2, 39x2
	KKS 1021 .....		Spares package - Sarita 160 braked castor kit Comprising items 19x2, 23x2
	KKS 1031 .....		Spares package - Sarita 160 foot support moulding assembly & reinforcing plate Comprising items 8
	See also		“Covers and Foot Support” section in this manual

# B - Chassis Assembly

P1081/3



# C - Covers and Foot Support

**Note:** Always quote Serial number of lifter, and specify Quantity, Part Number, description and colour (if applicable) when ordering spares.

**Note:** \*\* in listed part number refers to country code

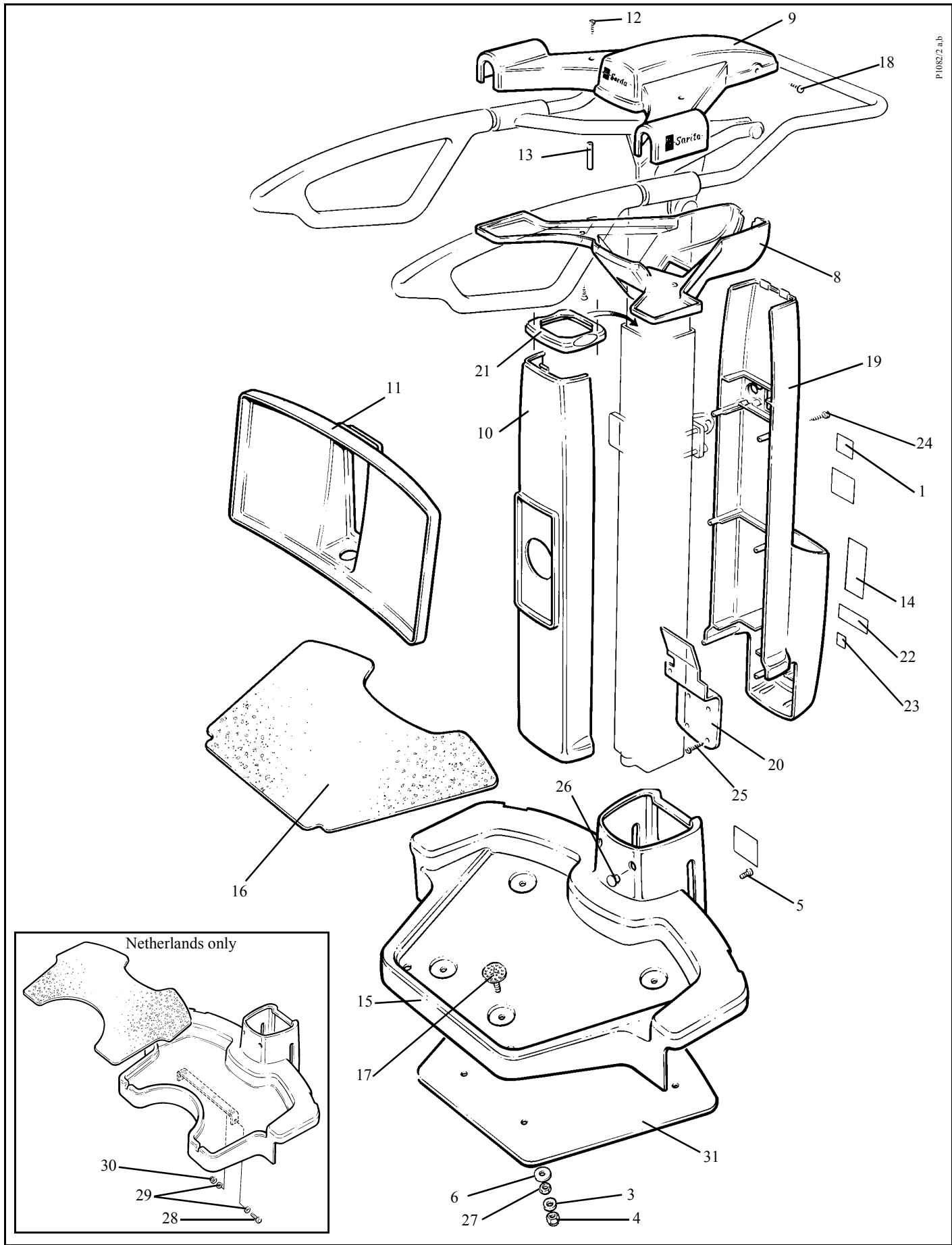
**Note:** .XX in listed part number refers to colour code suffix

Key to colour suffix: .04 - White, .06 - Beige, .11 - Lilac, .16 - Sapphire blue, .20 - Grey, .21 - Dark Green, .23 - Yellow, .25 - bright Green

Item	Part Number	Qty	Description
1	AX05760.0	1	Label, - 'Read Operating Instructions....'
3	EX40300.0	4	Washer, M8 (Std. foot support moulding only)
4	EX40360.0	4	Locknut, M8 (Std. foot support moulding only)
5	KKX10910.0	1	Screw, pozi, pan head M6 x 10mm long
6	EX43640.0	4	Large washer, 8mm I/D (Std. foot support moulding only)
7	KTX01420.0	1	Reinforcing plate
8	KKX20000.0	1	Bottom mould
9	KKX20030.0	1	Top Mould
10	KKX20180.0	1	Cover, actuator, front
11	KKX20190.0	1	Cover, kneepad, back
12	KKX20330.0	4	Screw, pozidrive countersunk head special, K40 x 14mm long
13	KKX20340.0	2	Spacer - Plastic
14	KKX20530.**	1	Label - Rating
15	KKX21180.0	1	Foot support moulding
	KKX22010.0	1	Foot support moulding (The Netherlands only)
16	KKX21190.0	1	Mat, non-slip
	KKX22010.0	1	Mat, non-slip (The Netherlands only)
17	KKX21200.0	4	Foot support fixing
18	KKX21460.0	2	Screw, socket button head, M5 x 10mm long
19	KTX00580.0	1	Cover, actuator, back
20	KTX00670.0	1	Cover, battery deflector
21	KTX05540.0	1	Actuator Top Cap, (Linak) if fitted
	KTX00690.0	1	Actuator Top Cap, (Magnetic) if fitted
22	KRX05060.0	1	Label - "Stop/Reset button"
23	KRX05070.0	1	Label - "Emergency lower button"
24	KTX02810.0	6	Screw, pozidrive pan head, K30 x 30mm long
25	KTX02830.0	4	Screw, pozidrive countersunk head special, KB25 x 18
26	LBX02410.0	2	Plug, Blanking
27	LX20700.0	4	Nut, thin, M8 (Std. foot support moulding only)
28	LBX00640.0	2	Setscrew hex. head M5 x 16mm long (The Netherlands foot support fixing only)
29	EX41520.0	4	Washer M5 (The Netherlands foot support fixing only)
30	HX33820.0	2	Nut - self locking M5 (The Netherlands foot support fixing only)
31	KTX01420.04	1	Reinforcing plate
	KKS 1001 .....		Spares package - Sarita 140 Actuator kit complete ( 8.0 amps) Comprising items 10, 19, 20, 21, 22, 23, 24x6, 25x4
	See also		"Actuator, Lifting Arms and Kneepad" section in this manual
	See also		"Electrics" section in this manual

Continued...

# C - Covers and Foot Support



Continued...

# C - Covers and Foot Support

**Note:** Always quote Serial number of lifter, and specify Quantity, Part Number, description and colour (if applicable) when ordering spares.

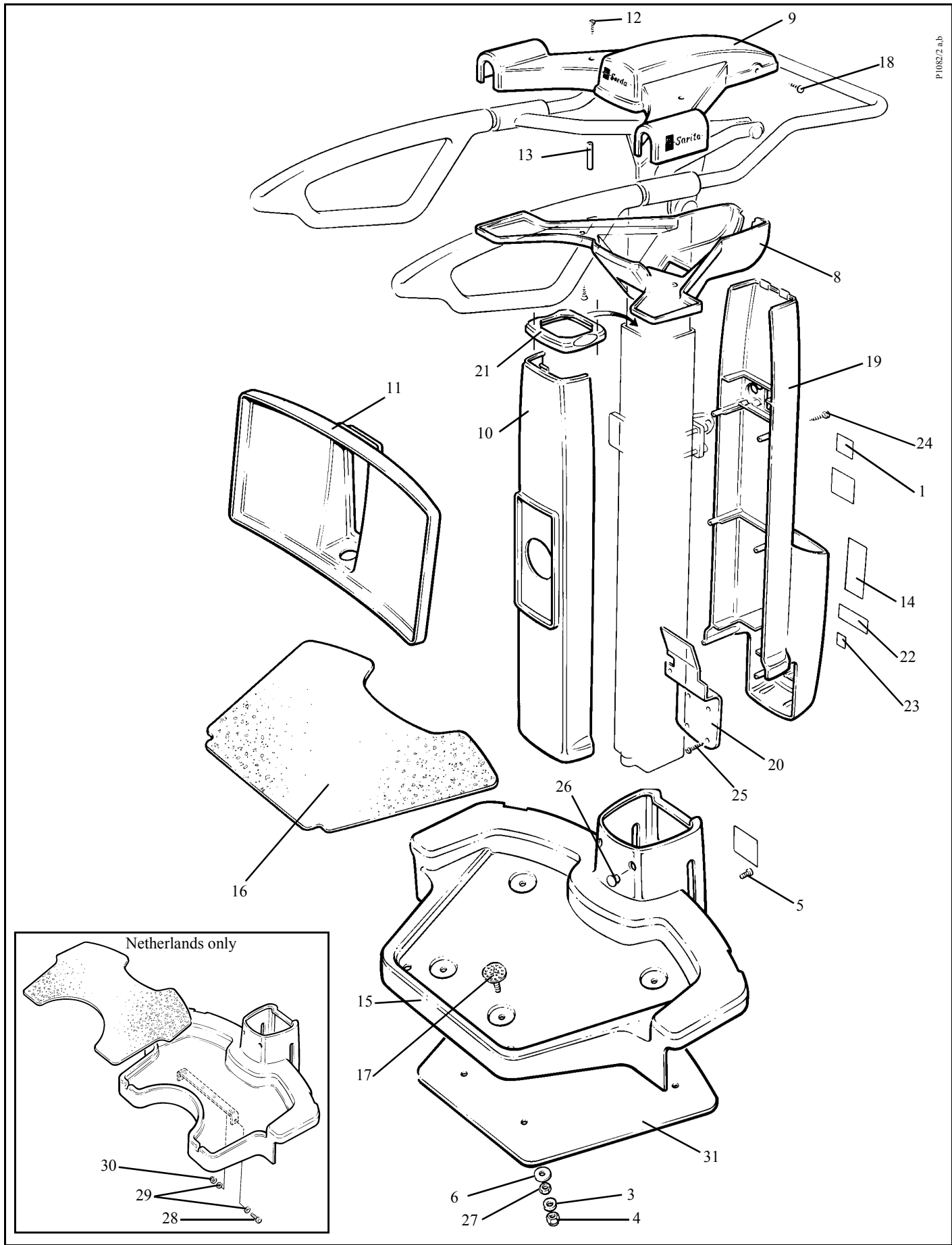
**Note:** \*\* in listed part number refers to country code

**Note:** .XX in listed part number refers to colour code suffix

Key to colour suffix: .04 - White, .06 - Beige, .11 - Lilac, .16 - Sapphire blue, .20 - Grey, .21 - Dark Green, .23 - Yellow, .25 - bright Green

Item	Part Number	Qty	Description
	KKS 1002 .....		Spares package - Sarita 140 Actuator kit (8.0 amps) Comprising items 21
	See also		“Actuator, Lifting Arms and Kneepad” section in this manual
	See also		“Electrics” section in this manual
	KKS 1003 .....		Spares package - Sarita 140 chassis assembly Comprising items 3 x4, 4 x4, 6 x4, 15, 16, 17 x4, 26 x2, 27 x4
	See also		“Chassis Assembly” section in this manual
	KKS 1006 .....		Spares package - Sarita chassis with Dutch footboard Comprising items 15, 16, 26x2, 28x2, 29x4, 30x2
	See also		“Chassis Assembly” section in this manual
	KKS 1008 .....		Spares package - Sarita 160 chassis assembly Comprising items 3x3, 4 x4, 6 x4, 15, 16, 17 x4, 26 x2, 27 x4, 31
	See also		“Chassis Assembly” section in this manual
	KKS 1009 .....		Spares package - Sarita 160 foot support moulding assembly Comprising items 3 x4, 4 x4, 6 x4, 15, 16, 17 x4, 26 x2, 27 x4
	See also		“Chassis Assembly” section in this manual
	KKS 1012 .....		Spares package - Sarita 160 wishbone assembly - Lilac
	KKS 1013 .....		Spares package - Sarita 160 wishbone assembly - Sapphire Blue
			Comprising items 8, 9, 12 x4, 13 x2
	See also		“Actuator, Lifting Arms and Kneepad” section in this manual
	KKS 1014 .....		Spares package - Sarita 160 kneepad assembly Comprising items 11
	See also		“Actuator, Lifting Arms and Kneepad” section in this manual
	KKS 1019 .....		Spares package - Sarita 160 actuator kit (9.6 amps) Comprising items 21
	See also		“Actuator, Lifting Arms and Kneepad” section in this manual
	See also		“Electrics” section in this manual
	KKS 1023 .....		Spares package - Sarita 160 actuator kit complete (9.6 amps) Comprising items 10 ,19, 20, 21, 24 x6, 25 x4
	See also		“Actuator, Lifting Arms and Kneepad” section in this manual
	See also		“Electrics” section in this manual
	KKS 1031 .....		Spares package - Sarita 160 foot support moulding assembly & reinforcing plate Comprising items 3 x4, 4 x4, 5 , 6 x4, 15, 16, 17 x4, 26 x2, 27 x4, 31
	See also		“Chassis Assembly” section in this manual

# C - Covers and Foot Support



# D - Electrics

**Note:** Always quote Serial number of lifter, and specify Quantity, Part Number, description and colour (if applicable) when ordering spares.

**Note:** \*\* in listed part number refers to country code

**Note:** .XX in listed part number refers to colour code suffix

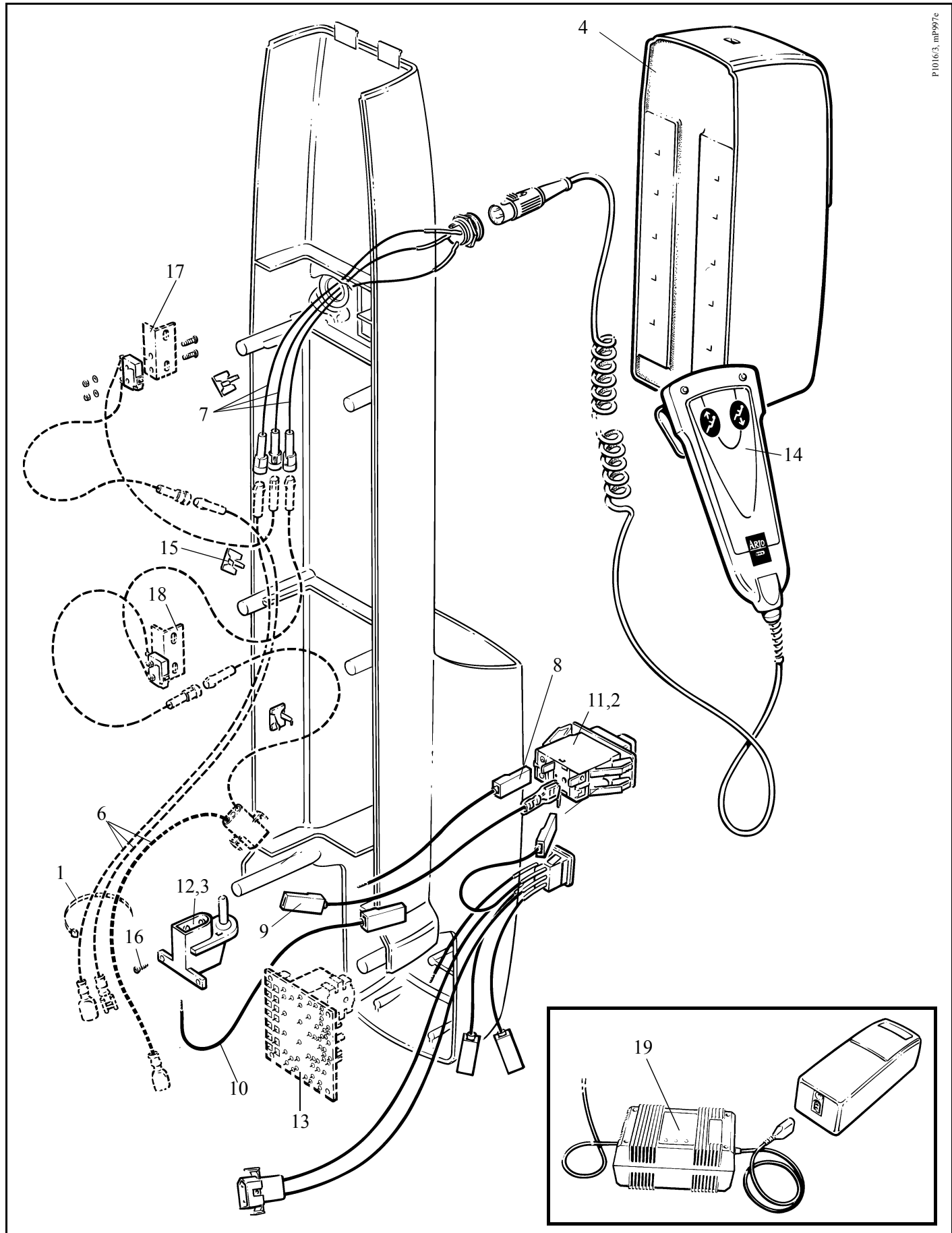
Key to colour suffix: .04 - White, .06 - Beige, .11 - Lilac, .16 - Sapphire blue, .20 - Grey, .21 - Dark Green, .23 - Yellow, .25 - bright Green

Item	Part Number	Qty	Description
1	AX15960.0	A/R	Cable tie
2	KKX21360.0	1	Bezel
3	HX33500.0	2	Contact, male
4	KTA0102	1	Battery assembly, includes:-
	KTX01070.**	1	Label, Battery - not illustrated
5	KTX00110.0	1	Loom 1, and Emergency lowering switch
6	KTX00120.0	1	Loom 2, and PCB/Actuator/DIN socket ("Magnetic")
7	KTX00130.0	1	Loom 3, and DIN socket
	KTX00140.0	1	Loom 4, (to actuator) (not illustrated)
8	KTX00160.0	1	Wire no. 1 - (emergency stop switch/battery terminal)
9	KTX00170.0	1	Wire no. 2 - (emergency stop switch/PCB)
10	KTX00180.0	1	Wire no. 3 - (PCB negative)
11	KTX00400.0	1	Stop Switch
12	KTX00640.0	1	Battery terminal, male
13	KTX00880.0	1	PCB - Control, 140kg, ("Magnetic" actuators only)
	KTX005240.0	1	PCB - Control, 160kg, ("Magnetic" actuators only)
14	KTX00890.0	1	Handset
15	KTX01120.0	6	Cable clip, self-adhesive
16	KTX02840.0	2	Screw, pozidrive, pan head K30 x 10mm long
17	KTX03070.0	1	Microswitch, bracket and loom assembly - top ("Magnetic" actuators only), comprising:-
	KTX03050.0	1	Bracket
	KTX03080.0	1	Microswitch
	KTX03090.0	2	Screw, slotted pan head, M2 x 12mm long
	KTX03100.0	2	Nut, M2
	KTX03110.0	2	Washer, 2mm I/D
18	KTX03120.0	1	Microswitch, bracket and loom assembly - bottom ("Magnetic" actuators only), comprising:-
	KTX03050.0	1	Bracket
	KTX03080.0	1	Microswitch
	KTX03090.0	2	Screw, slotted pan head, M2 x 12mm long
	KTX03100.0	2	Nut, M2
	KTX03110.0	2	Washer, 2mm I/D
19	KTA0101.EU	1	Battery charger
	KTA0101.GB	1	Battery charger
	KTA0101.US	1	Battery charger
	KTA0101.AU	1	Battery charger
	KTA0101.CH	1	Battery charger

In label part numbers listed above \*\* represents country code

Continued...





P1016/3, mb997e

Continued...

# D - Electrics

---

**Note:** Always quote Serial number of lifter, and specify Quantity, Part Number, description and colour (if applicable) when ordering spares.

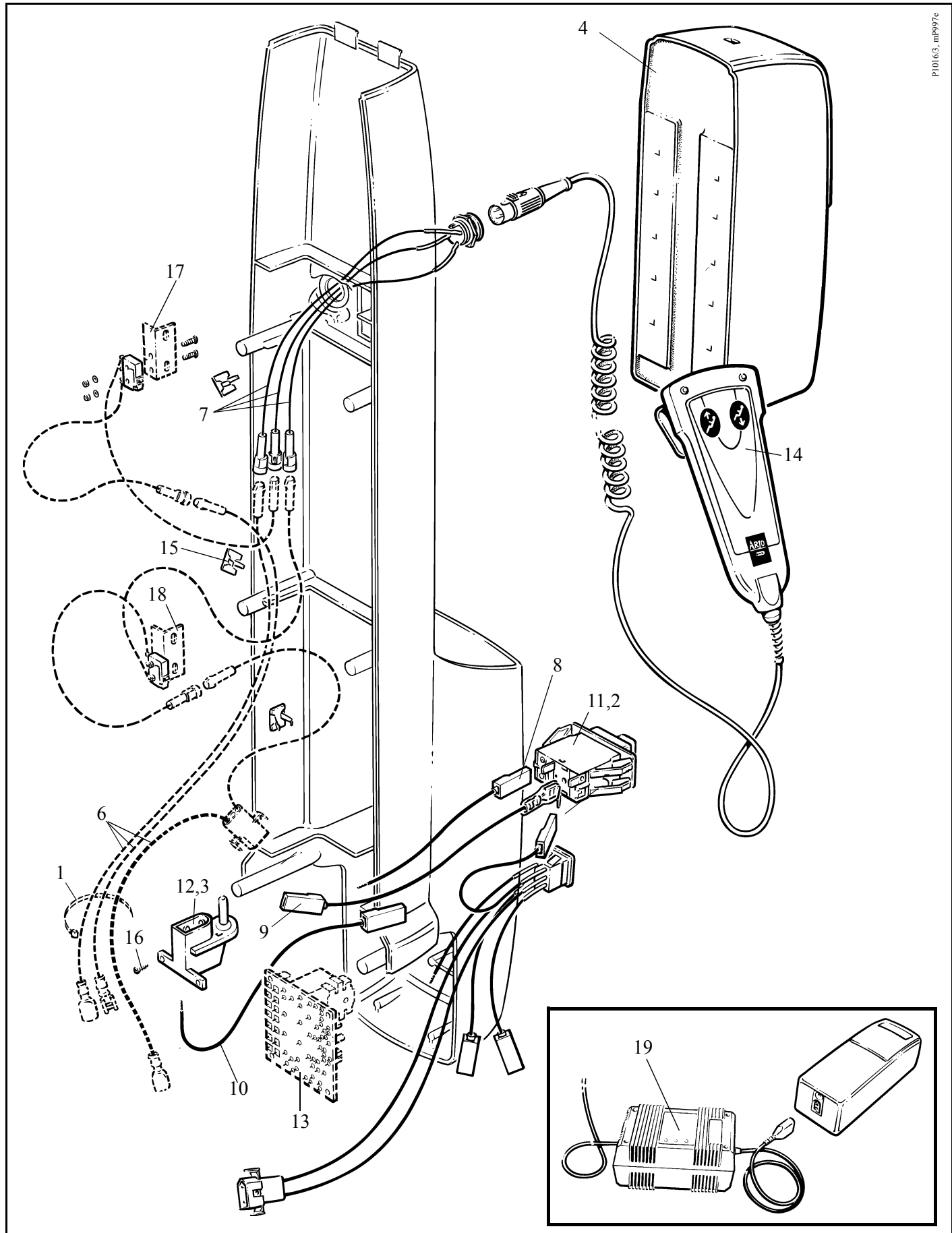
**Note:** \*\* in listed part number refers to country code

**Note:** .XX in listed part number refers to colour code suffix

Key to colour suffix: .04 - White, .06 - Beige, .11 - Lilac, .16 - Sapphire blue, .20 - Grey, .21 - Dark Green, .23 - Yellow, .25 - bright Green

Item	Part Number	Qty	Description
	KKS 1001 .....		Spares package - Sarita 140 Actuator kit complete (8.0 amps) Comprising items 1, 2, 3x2, 5, 7, 8, 9,10, 11,12, 14, 15x6, 16x2
	See also		“Actuator, Lifting Arms and Kneepad” section in this manual
	See also		“Covers and Foot Support” section in this manual
	KKS 1002 .....		Spares package - Sarita 140 Actuator kit (8.0 amps) Comprising items 15x2
	See also		“Actuator, Lifting Arms and Kneepad” section in this manual
	See also		“Covers and Foot Support” section in this manual
	KKS 1019 .....		Spares package - Sarita 160 Actuator kit (9.6 amps) Comprising items 15x2
	See also		“Actuator, Lifting Arms and Kneepad” section in this manual
	See also		“Covers and Foot Support” section in this manual
	KKS 1023 .....		Spares package - Actuator kit complete (8.0 amps) Comprising items 1, 2, 3x2, 5, 7, 8, 9, 10, 11,12, 14, 15x4, 16x2, 20
	See also		“Actuator, Lifting Arms and Kneepad” section in this manual
	See also		“Covers and Foot Support” section in this manual

# D - Electrics



P1016/3, m1997e

# E - Slings

---

**Note:** Always quote Serial number of lifter, and specify Quantity, Part Number, description and colour (if applicable) when ordering spares.

**Note:** \*\* in listed part number refers to country code

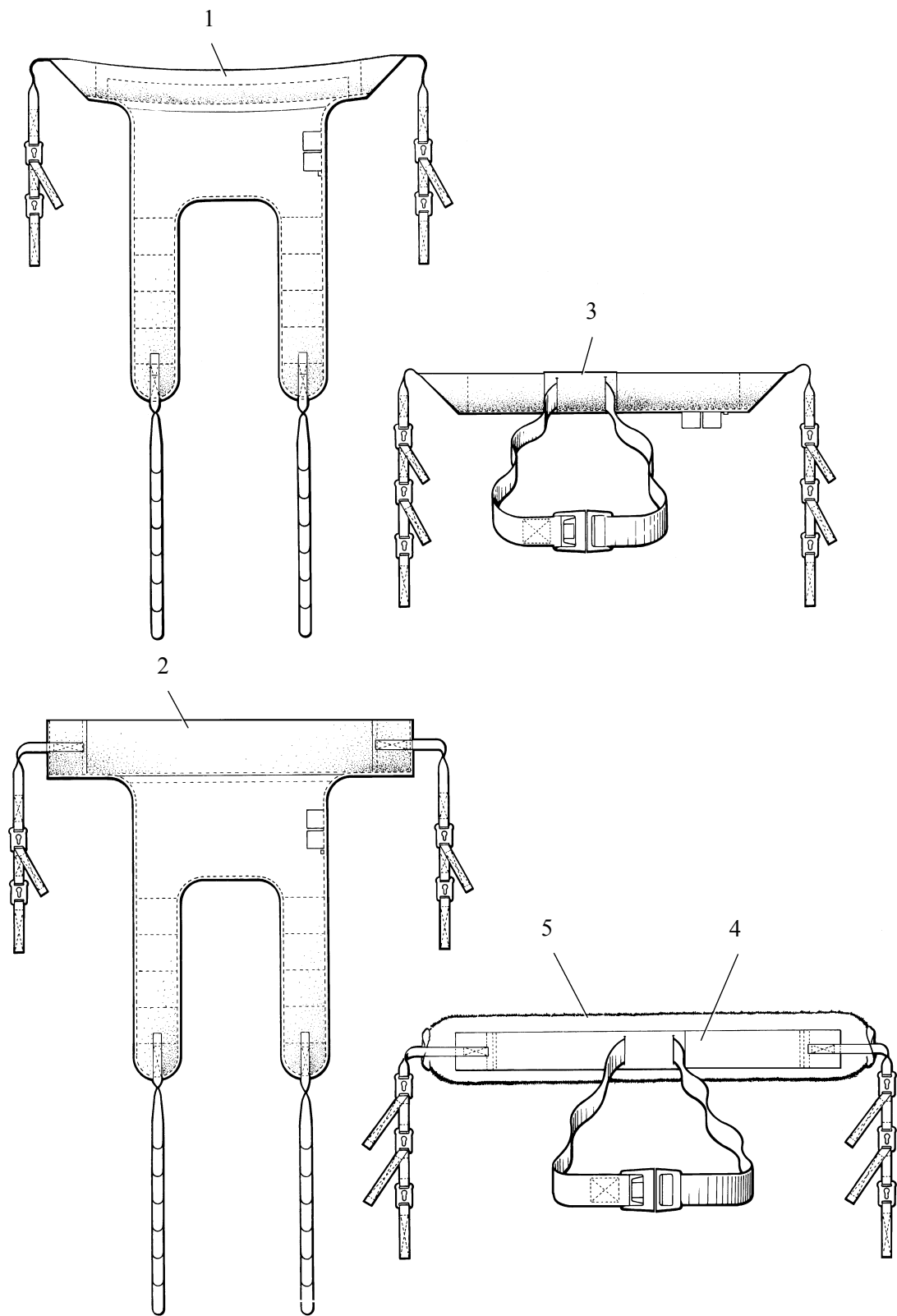
**Note:** .XX in listed part number refers to colour code suffix

Key to colour suffix: .04 - White, .06 - Beige, .11 - Lilac, .16 - Sapphire blue, .20 - Grey, .21 - Dark Green, .23 - Yellow, .25 - bright Green

Item	Part Number	Qty	Description
1	MAA3060.0	1	Transfer sling - roll
2	MAA3061.0	1	Transfer sling - flat
3	MAA3070.0	1	Standing sling - roll
4	MAA3071.0	1	Standing sling - flat (with fleece)
1	KKX20580.0	a/r	Fleece cover

# E - Slings

P1077, P1078



# Notes

---

# Notes

---

**AUSTRALIA**  
ARJO Hospital Equipment Pty. Ltd.  
154 Lytton Road  
Bulimba  
Brisbane  
QLD, 4171  
Tel. (61) 7 3395 6311  
Fax. (61) 7 3395 6712

**SCANDINAVIA**  
Sverige  
ARJO SCANDINAVIA AB  
Box 61, 241 21 Eslov  
Tel. 0413-645 00  
Fax 0413-645 83  
E-post: kundservice@arjo.se

**Danmark**  
ARJO SCANDINAVIA  
Postboks 51, 4632 Bjæverskov  
Tel. 45 93 27 37  
Fax. 45 93 27 39  
E-post: kundservice@arjo.se

**Norge**  
ARJO SCANDINAVIA  
Enebakkveien 117 d, 0680 Oslo  
Tel. 98 28 11 70  
Fax. 23 05 11 99  
E-post: kundservice@arjo.se

**BELGIQUE / BELGIË**  
ARJO Hospital Equipment nv/sa  
Terneseselei 248  
B-2160 WOMMELGEM  
Tel : 03 353 91 00  
Fax : 03 353 91 01  
Email: info@arjo.be

**CANADA**  
ARJO Canada Inc.  
1575 South Gateway Road  
Unit C  
Mississauga, ONTARIO  
L4W 5J1  
Tel. 1 800 665 4831  
Fax. 1 800 309 1116

**ČESKÁ REPUBLIKA**  
ARJO Hospital Equipment s.r.o.  
Strmá 35  
CZ-616 00 BRNO  
Tel. 549 254 252  
Fax. 541 213 550

**DEUTSCHLAND**  
ARJO Systeme für Rehabilitation  
GmbH  
Christof-Ruthof-Weg 6  
55252 Mainz-Kastel  
Tel.: 06134 186 0  
Fax: 06134 186 160  
E-mail: info@arjo.de

**ESPAÑA**  
ARJO SPAIN, S.A.  
C/ San Rafael, nº 6  
28108 ALCOBENDAS (MADRID)  
SPAIN  
Tel. 00 34 91 490 0636  
Fax. 00 34 91 490 0637

**FRANCE**  
ARJO Equipements Hospitaliers sa  
45, avenue de l'europe  
Eurocit BP133  
F-59436 RONCQ CEDEX  
FRANCE  
Tel: 03 20 28 13 13  
Fax: 03 20 28 13 14  
Email: info@arjo.fr

**GREAT BRITAIN**  
ARJO.  
St. Catherine Street  
Gloucester, GL1 2SL  
ENGLAND U.K.  
Tel. (08702) 430430  
Fax. (01452) 428344

**ARJO (Ireland) Ltd**  
Unit 6B  
Calmount Park  
Dublin 12  
Eire  
Tel. 00 35 3145 65565  
Fax. 00 35 3145 65575

**HONG KONG**  
ARJO Far East Ltd.  
1001-3 APEC Plaza,  
49 Hoi Yuen Road,  
Kwun Tong, Kowloon,  
HONG KONG  
Tel. 852 2508 9553  
Fax. 852 2508 1416

**ITALIA**  
ARJO Italia S.p.A.  
Via Poggio Verde, 34  
00148 ROMA  
Tel. 06 6566356 - 57  
Fax. 06 65663212  
promo@arjo.it

**NEDERLAND**  
ARJO NEDERLAND B.V.  
De Blomboogerd 8  
4003 BX TIEL  
Postbus 6116  
4000 HC TIEL  
Tel: 0344 64 08 00  
Fax: 0344 64 08 85  
E-mail: info@arjo.nl

**ÖSTERREICH**  
ARJO GmbH  
Föhrenweg 5  
A-6065 THAUR  
Tel. 05223 493350  
Fax. 05223 49335075

**ARJO Poland Sp. z o.o.**  
ul. Lirowa 27,  
02-387 Warsaw,  
Poland  
tel./fax office: +48 22 882-06-26..28  
tel./fax serive: +48 22 882-06-29

**SCHWEIZ / SVIZZERA**  
ARJO INTERNATIONAL AG  
Florenzstr. 1d,  
Postfach 4023  
BASEL  
Tel. +41 61 373 26 89.  
Fax. +41 61 373 11 00

**SCHWEIZ**  
ARJO-SIC AG  
Florenzstr. 1d  
Postfach  
4023 BASEL  
Tel. 0041 61 337 97 77  
Fax 0041 61 311 97 42

**USA**  
ARJO, Inc.  
50 North Gary Avenue  
Roselle, IL 60172  
Tel. 1-800-323-1245  
Fax. 1-888-594-ARJO(2756)



www.ARJO.com

If your country is not listed here, please contact your local distributor, or ARJO  
International AB, Box 61, S-241 21 ESLOV, SWEDEN.  
Tel +46 413 64500. Fax + 46 413 555586.

© ARJO MED. AB LTD



FM 21964  
ISO 9001:2000



MD 76970  
ISO 13485



EMS73184  
ISO 14001



ARJO, UK Branch of ARJO MED AB LTD