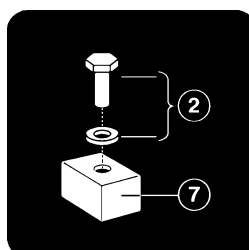


ARJO
ARJO

*Tempo*TM



Parts List



KPX 50560.GB

Issue 2

Oct 2004

Introduction

© ARJO Med. AB LTD

ARJO products are patented or patent pending. Patent information is available by contacting ARJO Med. AB LTD.

Our policy is one of continuous development and we therefore reserve the right to make technical alterations without notice. The content of this publication may not be copied either whole or in part without the consent of ARJO Med. AB LTD.

ARJO Med. AB LTD. strongly advise and warn that only ARJO Company Designated Parts, which are designed for the purpose, should be used on equipment and other appliances supplied by ARJO, to avoid injuries attributable to the use of inadequate parts

Un-authorized modifications on any ARJO Med. AB LTD. equipment may affect it's safety and are in breach of any warranty on it. ARJO Med. AB LTD. will not be held responsible for any accidents, incidents or lack of performance that occur as a result of any un-authorized modification to it's products.

The ARJO Company's Conditions of sale make specific provision confirming no liability in such circumstances

Product names are a trademark of the ARJO Group.

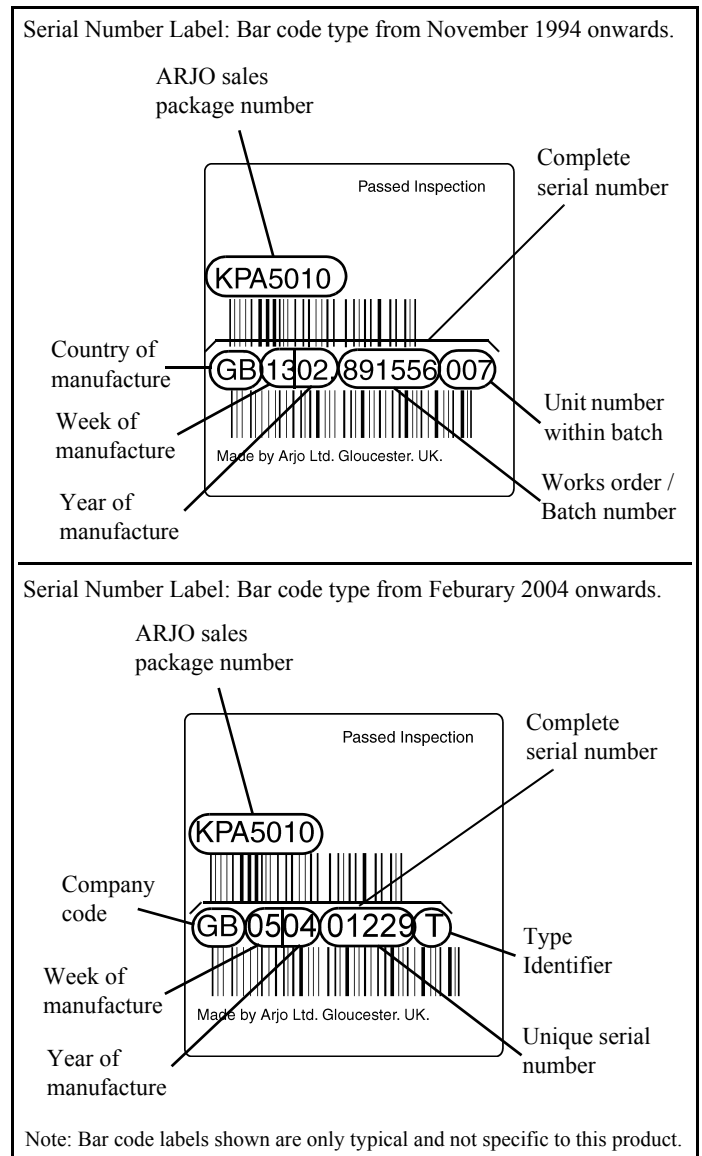
The vertical and horizontal lines printed in the margins adjacent to the text/illustrations in these instructions are for ARJO use only and should be disregarded by the reader.

Some of the information contained in these instructions may become outdated, due to improvements made to the product in the future. If you have any questions regarding these instructions or your lifter, please contact ARJO or their approved distributor.

When ordering spare parts it may be necessary to quote the main lifter serial number this number is to be found on the 'bar code' label.

The date of manufacture is shown in the first 6 digits of the serial number. On machines with 15 digit serial numbers the date is shown as e.g. GB1302 981556 007. (GB = country of manufacture, 13 = 13th week of that year and 02= year 2002), the remaining digits, are the machine identification number.

From February 2004 the barcode is of the new 12 digit format. This breaks down as follows. The first two digits are the manufacturers code, where GB = Arjo Gloucester and 88 = Pertinax. The next four digits are the week and year, where 0504 = week 5 and year 2004. The next five digits are a unique sequence of numbers. And the last digit identifies the type of product, where T = Top level component (e.g. the whole lifter), 1 = Modular component, and 8 = Slings.



Contents

		Page No.
A	Mast, Actuator, Console & Back Plate Assembly	4
B	Chassis - Powered 'V' Opening	12
C	Jib& 4 Point Spreader Bar	16
D	Scale Jib & 4 Point Spreader Bar	20
E	P.P.P Jib & 4 Point Spreader Bar	24
F	Scale P.P.P Jib & 4Point Spreader Bar	28
G	Combi & 4 Pt Spreader Bar Fittings	34
H	Electrics (standard & P.P.P jib lifters)	36

A - Mast, Actuator, Console & Back Plate Assembly

Note: Always quote Serial number of lifter, and specify Quantity, Part Number, description and colour (if applicable) when ordering spares.

Note: ** in listed part number refers to country code

Note: .XX in listed part number refers to colour code suffix

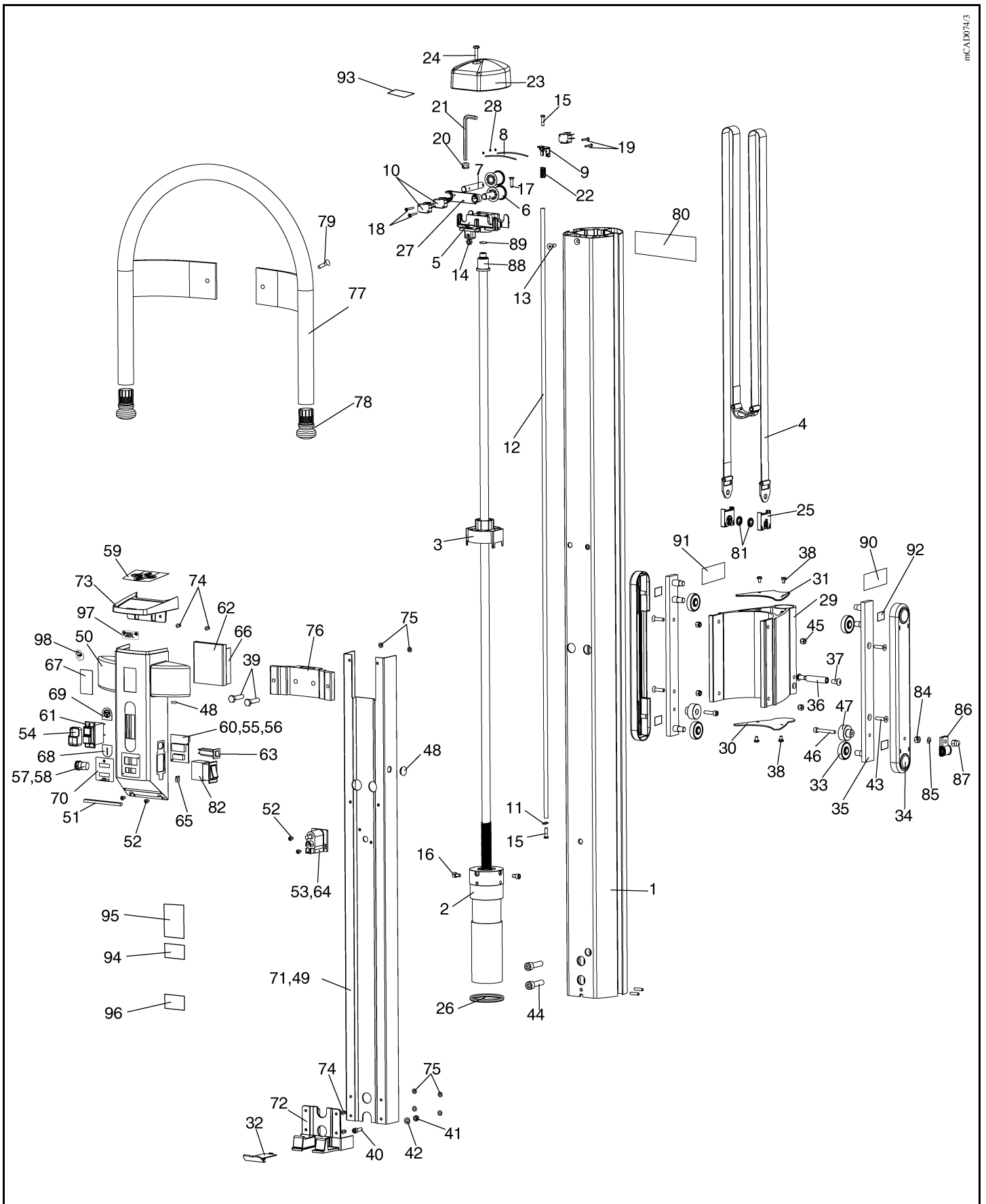
Key to colour suffix: .04 - White, .06 - Beige, .11 - Lilac, .16 - Sapphire blue, .20 - Grey, .21 - Dark Green, .23 - Yellow, .25 - bright Green

Item	Part Number	Qty	Description
1	KPX50010.20	1	Mast
2	KPX50310.0	1	Actuator (including item 88)
3	KPX50290.0	1	Nut - mounting
4	KPX50280.0	1	Lift strap assembly
5	KPX50020.0	1	Mast top casting
6	MX01560.0	2	Roller - lift strap
7	KPX50030.0	2	Roller pin
8	KPX50050.0	2	Leaf spring
9	KPX50070.0	1	Mounting plate - top limit switch
10	KRX00640.0	3	Micro switch
11	KPX50090.0	1	Plate - top limit
12	KPX50080.0	1	Plunger - top limit
13	DX08780.0	1	Screw - csk M6 x 20mm long
14	DX27660.0	1	Nut - M6
15	JX00460.0	2	Screw - self tapping No6 x ½inch long
16	KPX01200.0	2	Screw - socket cap head M6 x 10mm long
17	EX40200.0	1	Screw - csk M5 x 16mm long
18	KPX50750.0	2	Screw - M3 x 25mm long
19	JX70150.0	2	Screw - pan head M3 x 16mm long
20	KPX50590.0	1	Grommet
21	AX31220.0	1	Allen key (hexagonal wrench)
22	KPX50100.0	1	Spring - top limit
23	KPX50120.20	1	Top cap
24	KPX01570.0	1	Screw - pan head slotted M6 x 25mm long
25	KPX02050.0	2	Buckle cover
26	KPX50600.0	1	'O' ring
27	KPX50040.0	1	Switch mounting plate
28	KPX50670.0	3	'O' ring
29	KPX60010.20	1	Carriage
30	KPX60120.20	1	Cover plate - carriage bottom
	KPX67240.20	1	Cover plate - carriage bottom (PPP only)
31	KPX60110.20	1	Cover plate - carriage top
	KPX67010.20	1	Cover plate - carriage top (PPP only)
32	KPX00540.20	1	Blanking plate
33	KPX00340.0	4	Carriage roller
34	KPX60060.26	2	Carriage cover (Qty 1 on PPP)
	KPX67470.26	1	Carriage cover - right hand (PPP only)

continued...

A - Mast, Actuator, Console & Back Plate Assembly

mCAD0074/3



continued...

A - Mast, Actuator, Console & Back Plate Assembly

Note: Always quote Serial number of lifter, and specify Quantity, Part Number, description and colour (if applicable) when ordering spares.

Note: ** in listed part number refers to country code

Note: .XX in listed part number refers to colour code suffix

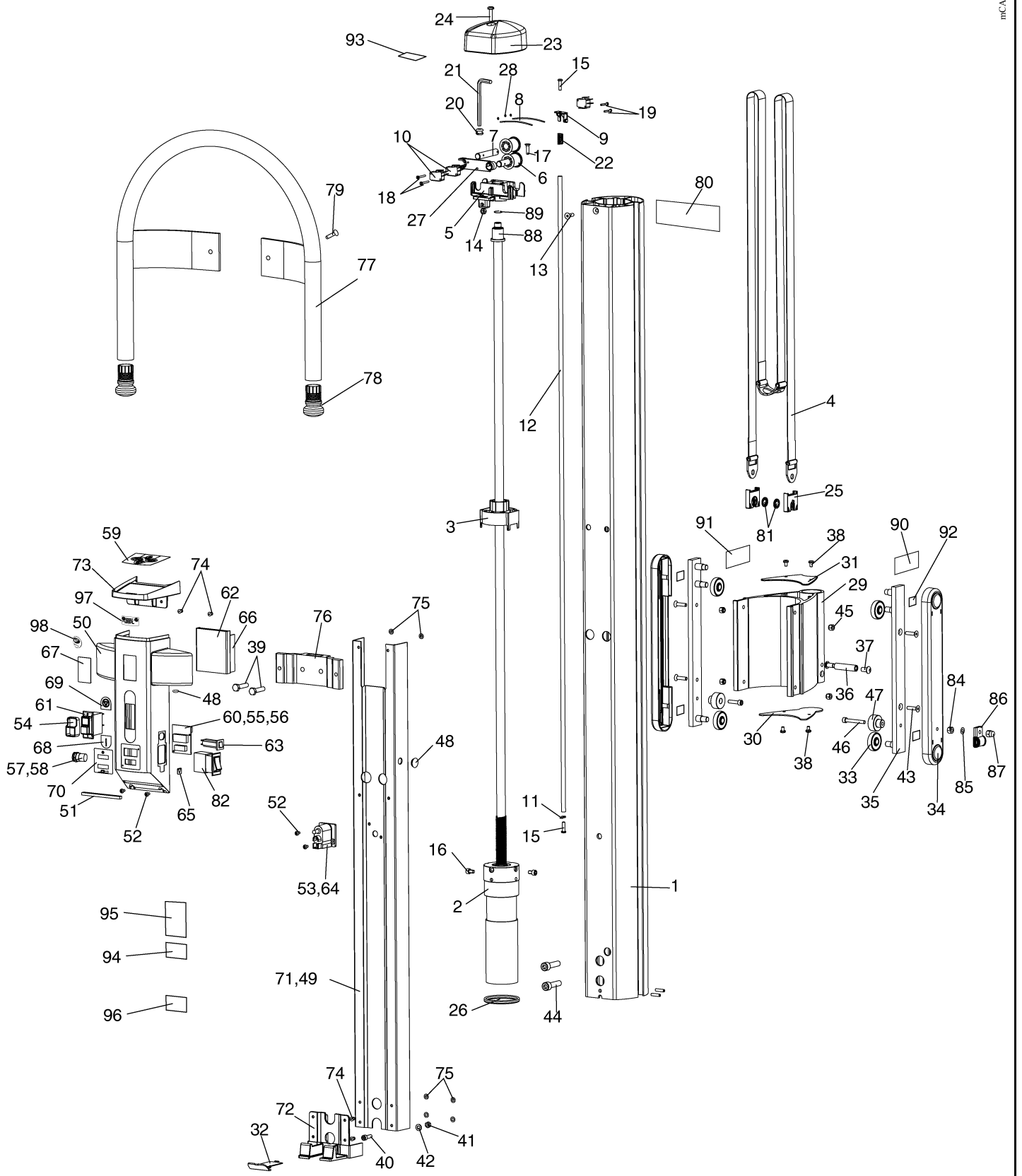
Key to colour suffix: .04 - White, .06 - Beige, .11 - Lilac, .16 - Sapphire blue, .20 - Grey, .21 - Dark Green, .23 - Yellow, .25 - bright Green

Item	Part Number	Qty	Description
35	KPX60020.0	2	Pin plate
36	KPX60040.0	1	Locking pin
37	KKX21400.0	2	Screw - button socket head M8 x 15mm long
38	KRX27430.0	4	Screw - pan head M5 x 8mm long
39	KPX50680.0	2	Set screw - hex head M8 x 35mm long
40	DX08760.0	1	Screw - socket cap head M6 x 20mm long
41	DX27660.0	1	Nut - M6
42	DX09690.0	1	Washer - M6
43	KPX60360.0	4	Screw - csk M6 x 25mm long
44	KPX50650.0	2	Screw - cap head M10 x 40mm long
45	GX17650.0	4	Nut - nyloc M6
46	MX04530.0	2	Screw - cap head M6 x 25mm long (quantity 1 on PPP)
	KPX67450.0	1	Screw - cap head M6 x 40mm long (PPP only)
47	KPX50610.0	2	Guide stop
48	EX40420.0	2	Blind grommet
	KPX67280.0	1	Strain relief bush (PPP only)
49	KPX50340.0	1	Backplate assembly (inc items 71-76 inclusive)
50	KPX00230.20	1	Cover plate - console
51	KGX00500.0	1	Foam strip
52	AX00441.0	4	Screw - pan head M4 x 8mm long
53	HX33500.0	2	Male terminal
54	KKX21360.0	1	Bezel
55	KPX02000.0	2	Screw - pozi pan head M2.5 x 8mm long
56	KKX51930.0	2	Nut - M2.5
57	KKX52900.0	1	Adhesive pad
58	KPX01620.0	1	Piezo buzzer
59	KPX00610.0	1	Switch panel - membrane
60	KPX00370.0	1	Hours and battery display
61	KKX10730.0	1	Stop/Start switch
62	KPX50690.0	1	Motor control PCB
63	KX57110.0	1	Thermal circuit breaker
64	KPX01670.0	1	Terminal housing (plastic)
65	KRX05070.0	1	Label - system failure lower override
66	KPX01190.0	2	Self adhesive pad
67	KGX00690.0	1	Label - ARJO
68	KPX01120.0	1	Label - ON
69	KPX01130.0	1	Label - OFF
70	KPX01110.0	1	Label - hour and battery

continued...

A - Mast, Actuator, Console & Back Plate Assembly

mCAD074/3



continued...

A - Mast, Actuator, Console & Back Plate Assembly

Note: Always quote Serial number of lifter, and specify Quantity, Part Number, description and colour (if applicable) when ordering spares.

Note: ** in listed part number refers to country code

Note: .XX in listed part number refers to colour code suffix

Key to colour suffix: .04 - White, .06 - Beige, .11 - Lilac, .16 - Sapphire blue, .20 - Grey, .21 - Dark Green, .23 - Yellow, .25 - bright Green

Item	Part Number	Qty	Description
71	KPX50150.20	1	Back plate
72	KPX50140.20	1	Battery location bracket
73	KPX50160.20	1	Console top
74	AX05580.0	6	Pop rivet - 4.8 diameter x 10mm long
75	EX41520.0	4	Washer 5mm diameter
76	KPX50170.0	1	Bracket - handle location
77	KPX00200.XX	1	Handle assembly
78	KPX00210.20	2	End Plug
79	DX08770.0	2	Screw - csk M8 x 20mm long
80	KPX50510.XX	1	Label - TEMPO
81	KPX02180.0	2	Starlock washer
82	KX57210.0	1	Switch - system failure lower override
83	-		
84	DX27660.0	2	Nut - M6 (PPP only)
85	DX09690.0	1	Washer - M6 (PPP only)
86	KPX67440.0	1	'P' clip (PPP only)
87	AX25150.0	1	Dome nut - M6 (PPP only)
88	KPX50710.0	1	Bearing sleeve (up to and including Mast serial No. GB 3701 878222010)
	KPX50700.0	1	Bearing sleeve (from Mast serial No. GB 3701 878223001)
89	KPX50740.0	1	Circlip - actuator
90	KPX50630.0	1	Label - switch direction RH (PPP only)
91	KPX50640.0	1	Label - switch direction LH (PPP only)
92	KPX11510.0	4	Adhesive pad
93	KPX67480.0	1	Label - read operating instructions
94	KPX80106.0	1	Label - mode of operation & electrical information
95	KPX91000.**	1	Label - S.W.L. / address (Silver set)
96	-	A/R	Label - bar code (not a spare)
97	LBX05560.0	1	Label - ETL
98	LBX02310.0	1	Label - NF

KPS 3000..... Spares package - Battery location bracket
Comprising items 72, 74 x4, 75 x4

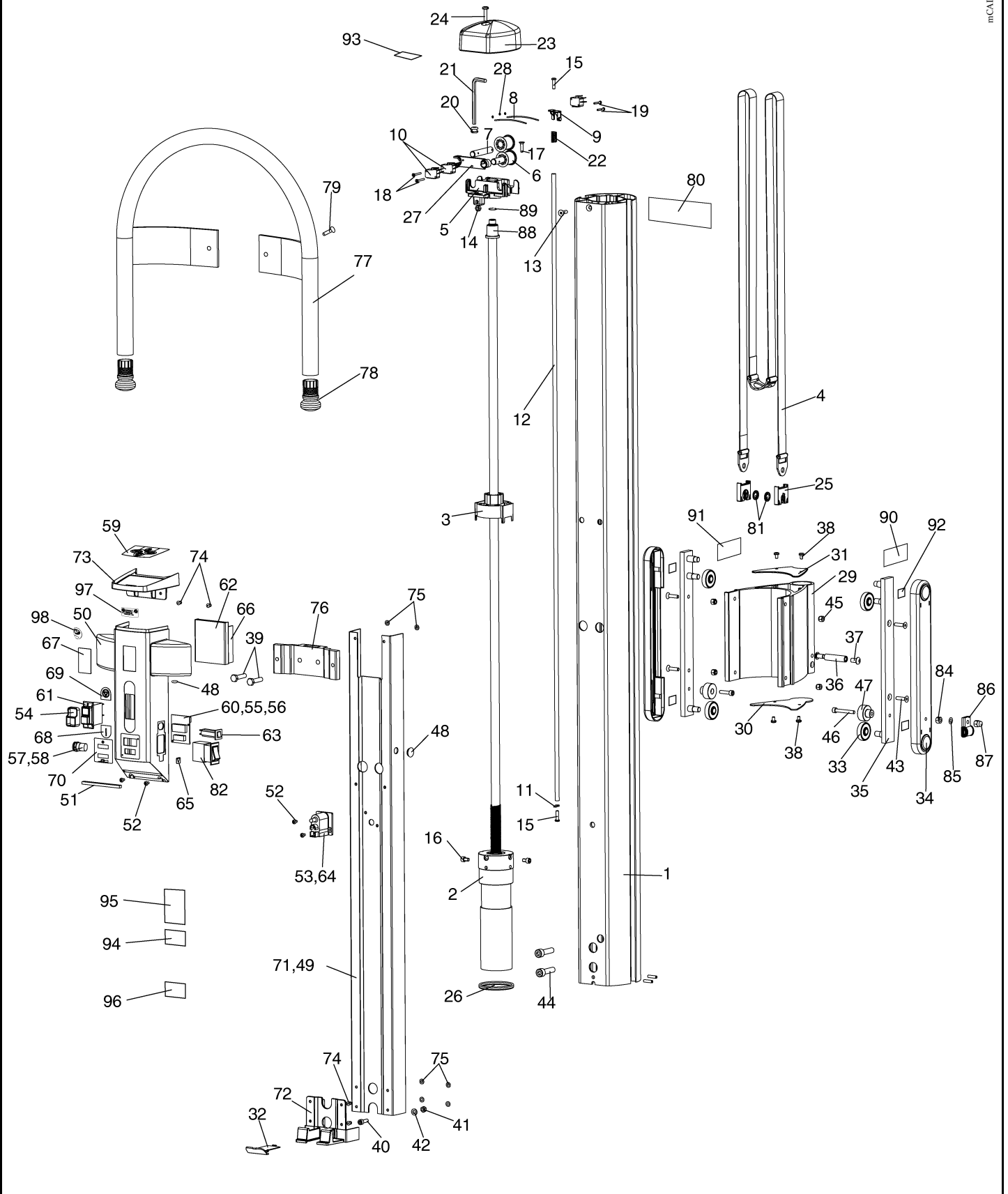
KPS 3001..... Spares package - Top console cover plate
Comprising items 59, 73, 74 x2, 75 x2

KPS 3002..... Spares package - Back plate assembly
Comprising items 49, 59

continued...

A - Mast, Actuator, Console & Back Plate Assembly

mCA D074.3



continued...

A - Mast, Actuator, Console & Back Plate Assembly

Note: Always quote Serial number of lifter, and specify Quantity, Part Number, description and colour (if applicable) when ordering spares.

Note: ** in listed part number refers to country code

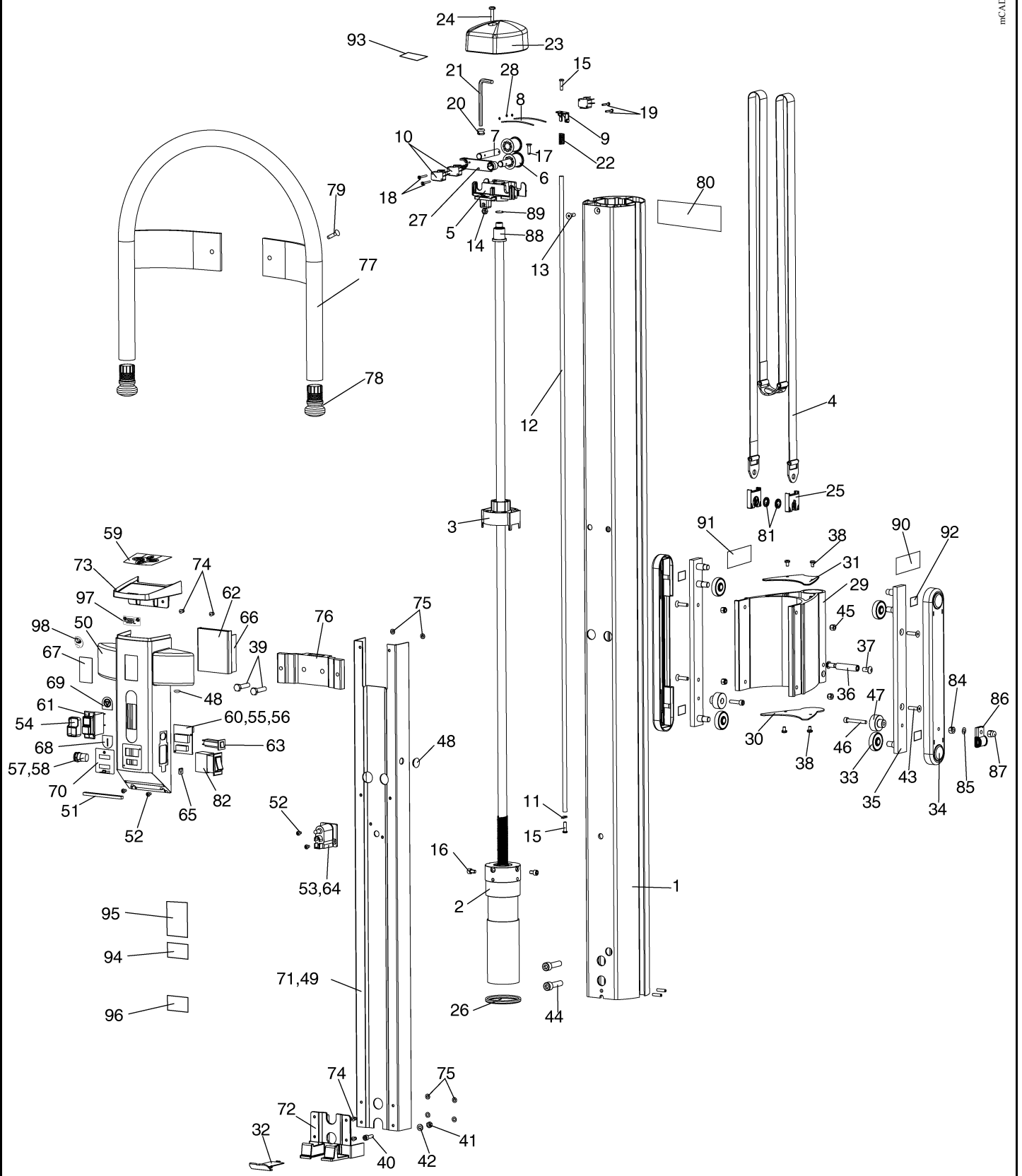
Note: .XX in listed part number refers to colour code suffix

Key to colour suffix: .04 - White, .06 - Beige, .11 - Lilac, .16 - Sapphire blue, .20 - Grey, .21 - Dark Green, .23 - Yellow, .25 - bright Green

Item	Part Number	Qty	Description
	KPS 1003.....		Spares package - Console cover plate Comprising items 50, 51, 57, 58, 65, 66 x2, 67, 68, 69, 70
	KPS 3004.....		Spares package - Actuator replacement Comprising items 2, 3, 4, 16 x2, 25 x2, 81 x2
	KPS 3005-XX.....		Spares package - Mast replacement Comprising items 1, 25 x2, 44 x2, 80, 81 x2
	KPS 3006.....		Spares package - Lift strap Comprising items 4, 25 x2, 81 x2, 89
	KPS 3007.....		Spares package - Pin and roller Comprising items 6 x2, 7 x2, 8 x2, 28 x3
	KPS 3008-XX.....		Spares package - Handle assembly Comprising items 77, 78 x2, 79 x2
	KPS 1035.....		Spares package - Buzzer Comprising items 57, 58
	KPS 3009.....		Spares package - Carriage roller Comprising items 33 x4
	KPS 3010.....		Spares package - Top limit kit Comprising items 9, 11, 12, 15 x2, 19 x2, 22
	KPS 3011.....		Spares package - Buckle cover kit Comprising items 25 x2, 81 x2
	KPS 3012.....		Spares package - Handle location bracket Comprising items 74 x2, 75 x2, 76

A - Mast, Actuator, Console & Back Plate Assembly

mC/A1D074/3



B - Chassis - Powered 'V' Opening

Note: Always quote Serial number of lifter, and specify Quantity, Part Number, description and colour (if applicable) when ordering spares.

Note: ** in listed part number refers to country code

Note: .XX in listed part number refers to colour code suffix

Key to colour suffix: .04 - White, .06 - Beige, .11 - Lilac, .16 - Sapphire blue, .20 - Grey, .21 - Dark Green, .23 - Yellow, .25 - bright Green

Item	Part Number	Qty	Description
1	KPX10500.20	1	Cross member
2	KPX10340.26	1	End cap - handed
3	KPX10350.26	1	End cap - handed
4	KPX11440.20	1	Leg assembly - handed
5	KPX11500.20	1	Leg assembly - handed
6	KRX11600.20	2	Castor - 100mm diameter
	KPA3075	1	Castors - Pair, 75mm diameter(option)(reduces SWL to 140kg)
7	KPX10410.0	2	Screw - Soc. csk. head M12 x 110mm long
8	KKX50820.XX	2	Castor - twin braked - 100mm dia.
9	KRX10280.0	1	Actuator
10	KPX11400.0	2	Clevis pin - 10mm diameter
11	JX68800.0	2	Safety fastener
12	KPX11310.0	1	Centralisation unit
13	KPX16770.0	2	Set Screw - Soc. M8 x 25mm long
14	AX15240.0	2	Screw - Soc. csk. head M6 x 12mm long
15	KPX11190.0	1	Retaining plate - mast
16	KPX10470.0	2	Spacer - bearing pivot
17	KTX00290.0	4	Bush - bearing pivot
18	KPX11470.20	2	Leg extrusion - plastic
19	KPX11480.26	2	Cover - foot bracket (where fitted)
20	KPX11510.0	2	Self adhesive pad (where fitted)
21	KPX11540.0	1	Polystyrene block
22	KPX11430.20	2	Cap
23	KKX10700.0	4	Adhesive pad
24	KPX11580.20	4	Castor - 75mm diameter
25	KPX80680.XX	1	Leg assembly (handed)
26	KPX80679.XX	1	Leg assembly (handed)
27	KPX11610.XX	2	Leg extrusion - plastic
28	KPX10501-XX	1	Cross member (introduced Aug 2004)

KPS 1010..... Spares package - Chassis leg (handed)
Comprising items 4, 6 x2, 11, 17 x2, 18, 22, 20

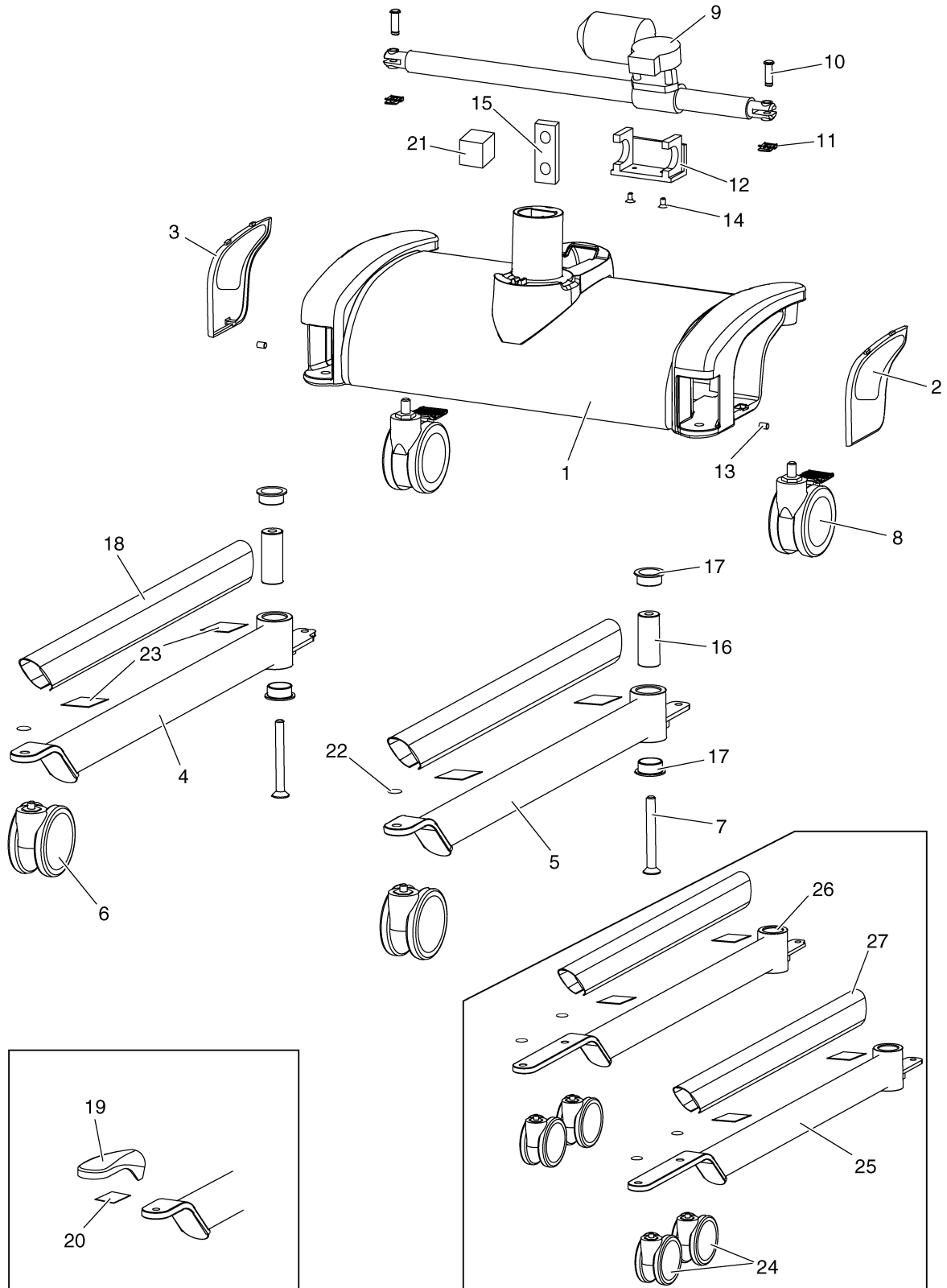
KPS 1011..... Spares package - Chassis leg (handed)
Comprising items 5, 6 x2, 11, 17 x2, 18, 22, 20

KPS 1013..... Spares package - Actuator replacement
Comprising items 9, 10 x2, 11 x2

continued...

B - Chassis - Powered 'V' Opening

mCAD0069b



continued...

B - Chassis - Powered 'V' Opening

Note: Always quote Serial number of lifter, and specify Quantity, Part Number, description and colour (if applicable) when ordering spares.

Note: ** in listed part number refers to country code

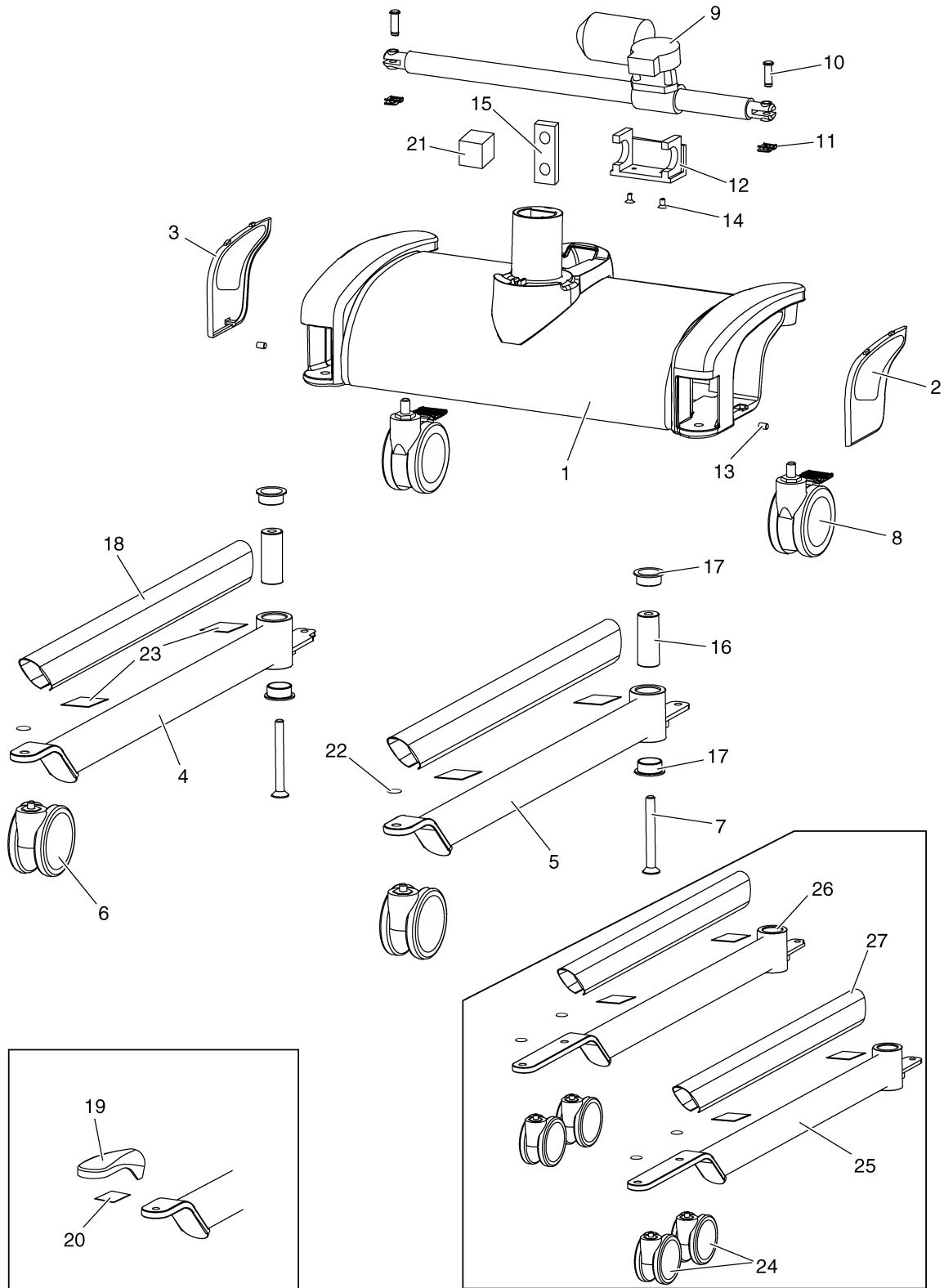
Note: .XX in listed part number refers to colour code suffix

Key to colour suffix: .04 - White, .06 - Beige, .11 - Lilac, .16 - Sapphire blue, .20 - Grey, .21 - Dark Green, .23 - Yellow, .25 - bright Green

Item	Part Number	Qty	Description
	KPS 1014.....		Spares package - Chassis leg bush Comprising items 17 x2
	KKS 5039		Spares package - Front castor kit (metal body) Comprising items 6 x2 (as applicable)
	KKS 5040		Spares package - Rear castor kit (metal body) Comprising item 8 x2

B - Chassis - Powered 'V' Opening

mCAD069b



C - Jib & 4 Point Spreader Bar

Note: Always quote Serial number of lifter, and specify Quantity, Part Number, description and colour (if applicable) when ordering spares.

Note: ** in listed part number refers to country code

Note: .XX in listed part number refers to colour code suffix

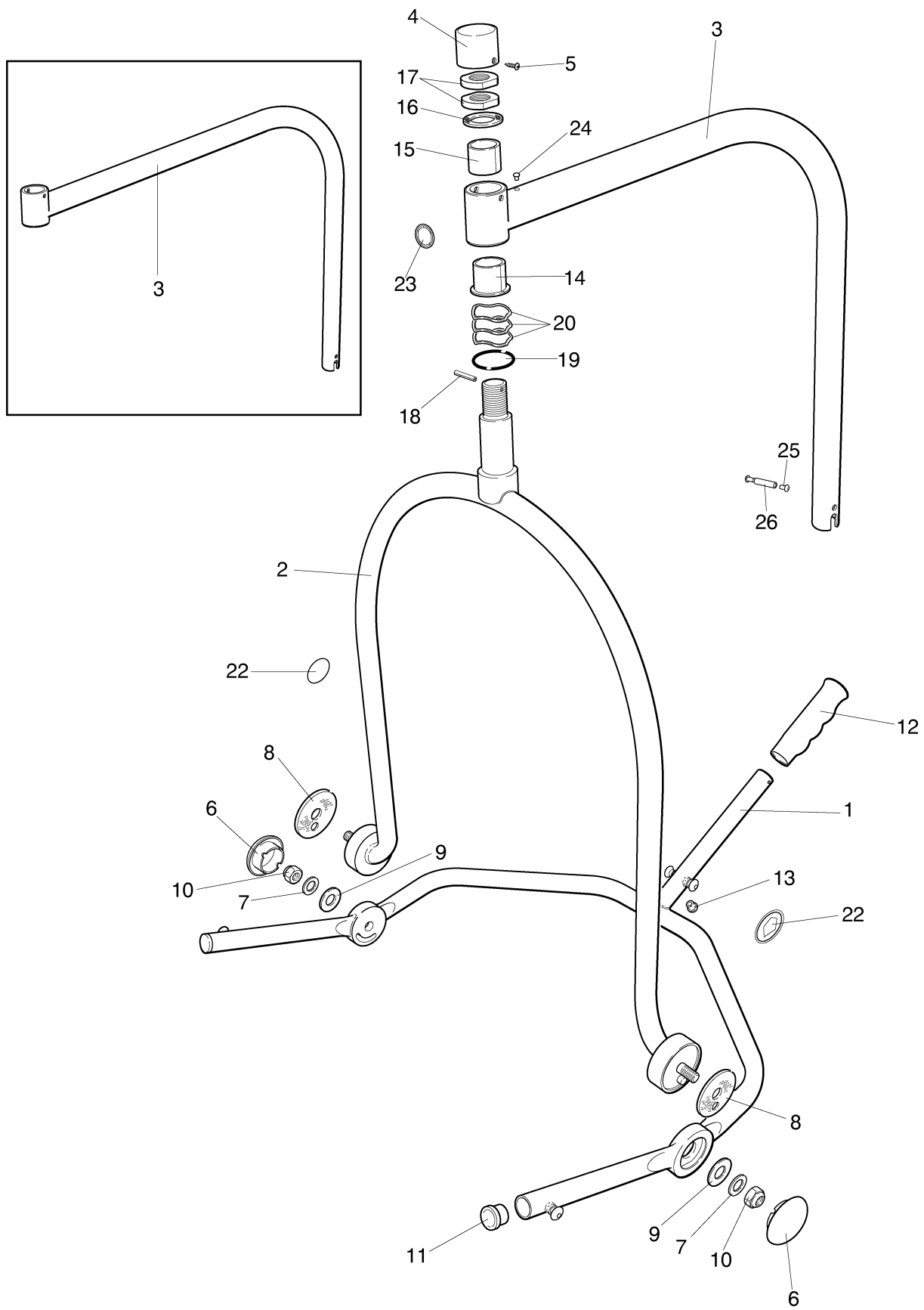
Key to colour suffix: .04 - White, .06 - Beige, .11 - Lilac, .16 - Sapphire blue, .20 - Grey, .21 - Dark Green, .23 - Yellow, .25 - bright Green

Item	Part Number	Qty	Description
1	KPX20160.XX	1	Lift frame
2	KPX20570.XX	1	Lift support
3	KPX60030.20	1	Jib - standard
3	KPX60200.20	1	Jib - extended
4	KPX15870.20	1	Extension cover - standard
5	AX28220.0	2	Screw - pozi pan head M4 x 5mm long
6	MX01460.20	2	Cap
7	MX01450.0	2	Washer - nylon
8	MX01440.0	2	Friction washer
9	GX20460.0	2	Disc spring washer
10	AX01201.0	2	Nut - nyloc thin - M10
11	KPX20310.20	2	End plug
12	KPX20100.20	1	Hand grip
13	KMX01080.0	1	Plug
14	KMX00360.0	1	Flanged bush
15	KMX00370.0	1	Bush
16	KMX00310.0	1	Friction disc
17	KPX80582.00	2	Lock nut
18	CX15360.0	1	Spirol pin - 4mm diameter x 24mm long
19	KRX21100.0	1	'O' ring
20	KRX21110.0	3	Bearing spring
21	-		
22	KPX20610.0	2	Label - SWL 200kg
23	LBX02460.0	1	Label - sling size guide
24	KPX60410.0	1	Plug
25	KPX81306.0	2	Screw, socket button head, M4
26	KPX81307.0	1	Spacer

continued...

C - Jib & 4 Point Spreader Bar

P1460/3



continued...

C - Jib & 4 Point Spreader Bar

Note: Always quote Serial number of lifter, and specify Quantity, Part Number, description and colour (if applicable) when ordering spares.

Note: ** in listed part number refers to country code

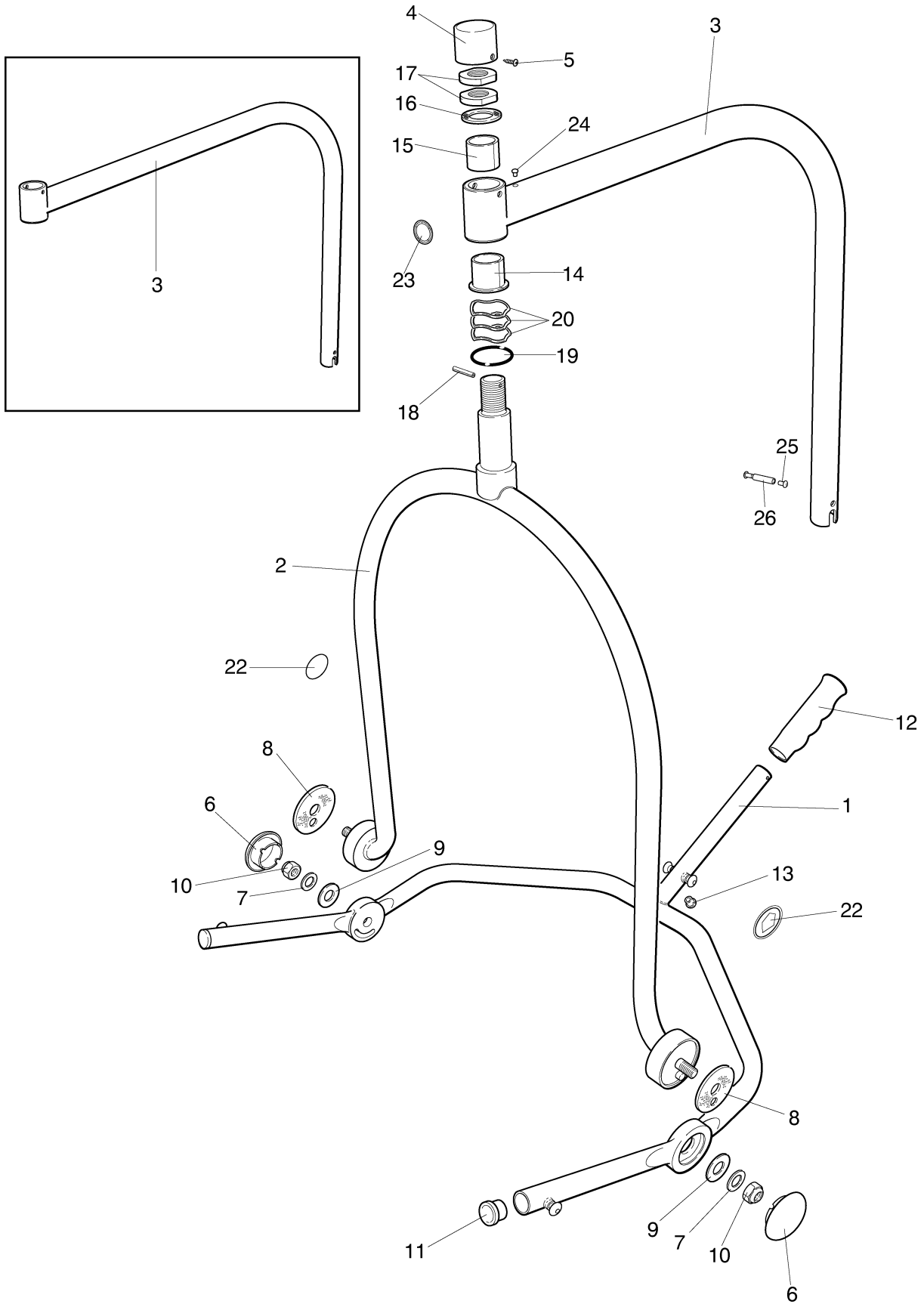
Note: .XX in listed part number refers to colour code suffix

Key to colour suffix: .04 - White, .06 - Beige, .11 - Lilac, .16 - Sapphire blue, .20 - Grey, .21 - Dark Green, .23 - Yellow, .25 - bright Green

Item	Part Number	Qty	Description
	KPS 3013-XX.....		Spares package - Lift support Comprising items 2, 7 x2, 8 x2, 9 x2, 10 x2, 16, 18, 19, 22 x2
	KPS 1017-XX.....		Spares package - Lift frame Comprising items 1, 8 x2, 9 x2, 10 x2, 11 x2, 12, 13, 20
	KPS 3014.....		Spares package - Top end bearing Comprising items 14, 15, 16, 18, 19, 20 x3
	KPS 3015.....		Spares package - Jib (standard) Comprising items 3, 15, 16, 18
	KPS 3016.....		Spares package - Jib (extended) Comprising items 3, 14, 15, 16, 18, 25, 26
	KPS 3027.....		Spares package - Friction washer (lift frame) (not for PPP) Comprising items 7 x2, 8 x2, 9 x2, 10 x2
	KPS 1027.....		Spares package - Friction washer (pintle) Comprising items 16, 18

C - Jib & 4 Point Spreader Bar

P1460/3



D - Scale Jib & 4 Point Spreader Bar

Note: Always quote Serial number of lifter, and specify Quantity, Part Number, description and colour (if applicable) when ordering spares.

Note: ** in listed part number refers to country code

Note: .XX in listed part number refers to colour code suffix

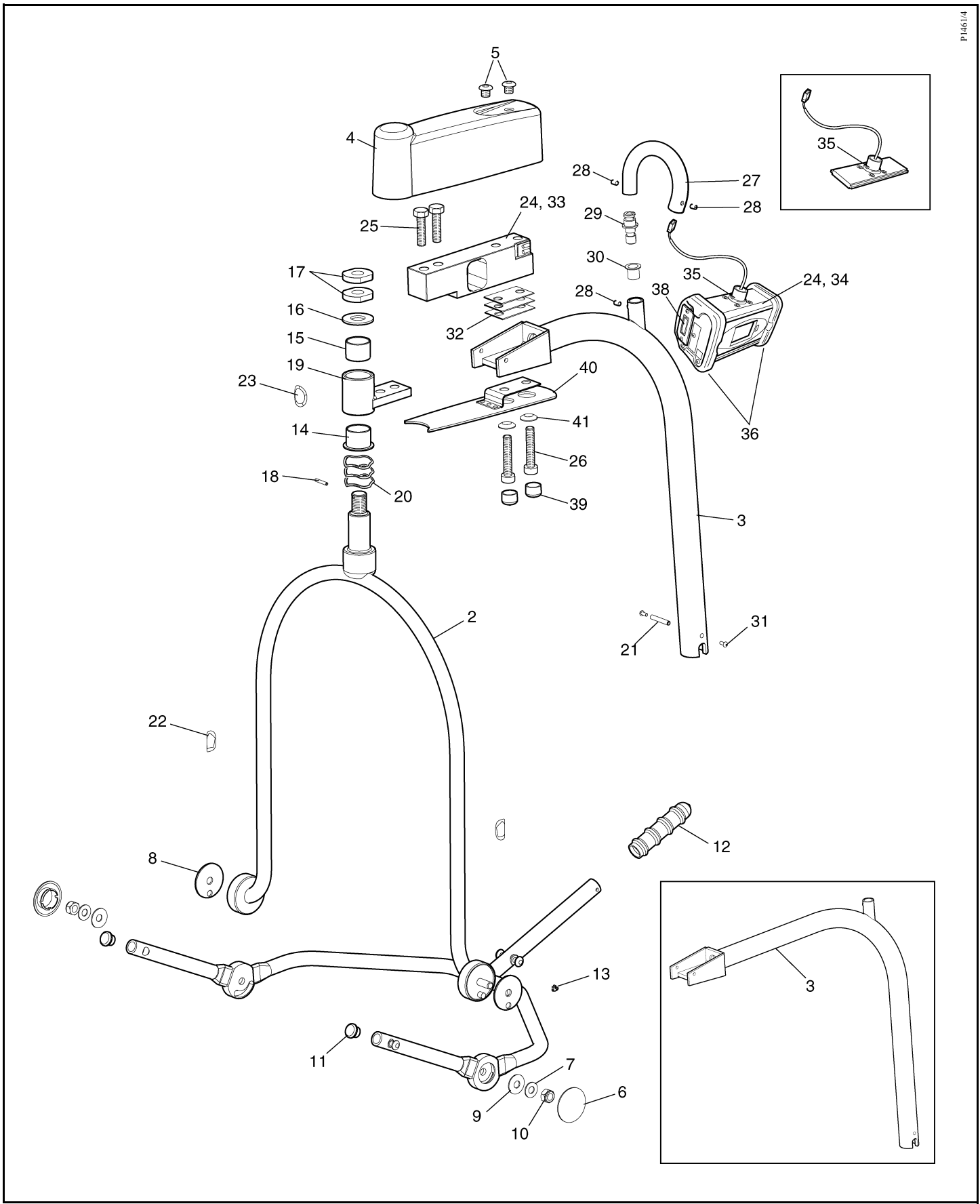
Key to colour suffix: .04 - White, .06 - Beige, .11 - Lilac, .16 - Sapphire blue, .20 - Grey, .21 - Dark Green, .23 - Yellow, .25 - bright Green

Item	Part Number	Qty	Description
1	KPX20160.XX	1	Lift frame
2	KPX20570.XX	1	Lift support
3	KPX67710.20	1	Jib - scale
	KPX67810.20	1	Jib - scale (extended)
4	KPX60140.20	1	Load cell cover
5	KPX60370.0	2	Screw - scale cover
6	MX01460.20	2	Cap
7	MX01450.0	2	Washer - nylon
8	MX01440.0	2	Friction washer
9	GX20460.0	2	Disc spring washer
10	AX01201.0	2	Nut - nyloc thin - M10
11	KPX20310.20	2	End plug
12	KPX20100.20	1	Hand grip
13	KMX01080.0	1	Plug
14	KMX00360.0	1	Flanged bush
15	KMX00370.0	1	Bush
16	KMX00310.0	1	Friction disc
17	KPX80582.00	2	Lock nut
18	CX15360.0	1	Spirol pin - 4mm diameter x 24mm long
19	KPX15220.20	1	Front end pivot - scale
20	KRX21110.0	3	Bearing spring
21	KPX81307.0	1	Spacer
22	KPX20610.0	2	Label - SWL 200kg
23	LBX02460.0	1	Label - sling size guide
24	KPX60190.0	1	Scale kit 2003
25	KX50360.0	2	Bolt - hex head M12 x 55mm long
26	KPX15660.0	2	Cap screw - M12 x 50mm long
27	KPX60430.XX	1	Tube - "swan neck"
28	LBX00820.0	3	Set screw - M5 x 6mm long
29	KPX60440.0	1	Tube insert
30	KPX60320.0	1	Bush
31	KPX81306.0	2	Screw, socket button head M4
32	KPX60450-00	3	Spacer - tapered
33	KRX20790.0	1	Load cell
34	KPX60380.0	1	Display (complete)
35	KPX60400.0	1	Pivot piece kit
36	KPX60390.0	1	End cap kit (LH & RH)
37	KTX05390.0	1	Battery holder (not illustrated)
38	KTX05570.0	1	Battery cover c/w screws and label

continued...

D - Scale Jib & 4 Point Spreader Bar

P1461/4



continued...

D - Scale Jib & 4 Point Spreader Bar

Note: Always quote Serial number of lifter, and specify Quantity, Part Number, description and colour (if applicable) when ordering spares.

Note: ** in listed part number refers to country code

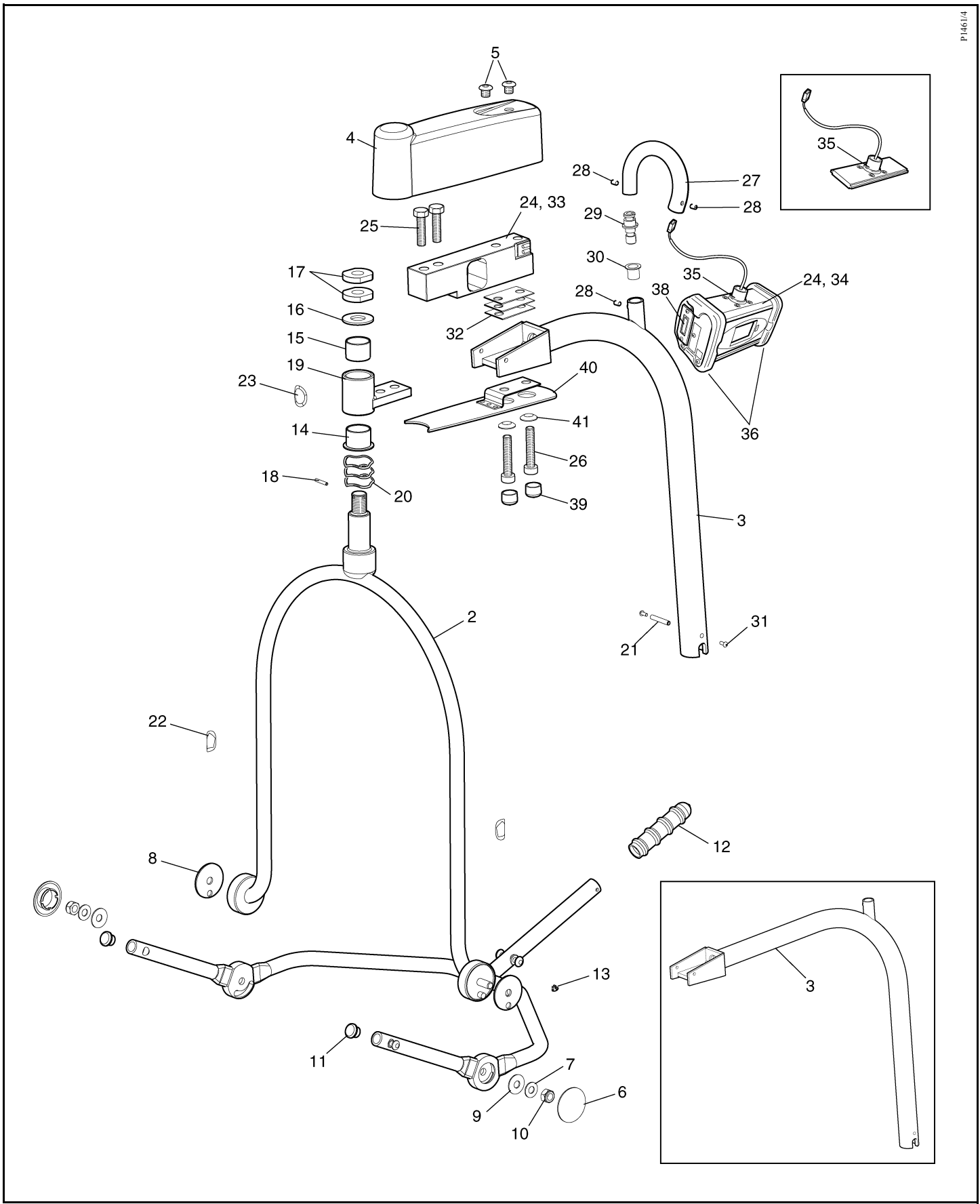
Note: .XX in listed part number refers to colour code suffix

Key to colour suffix: .04 - White, .06 - Beige, .11 - Lilac, .16 - Sapphire blue, .20 - Grey, .21 - Dark Green, .23 - Yellow, .25 - bright Green

Item	Part Number	Qty	Description
	KPX67740-XX	2	Flexible cap
	KPX67770-XX	1	Cover plate
	KPX67750-00	2	Alignment washer
	KPS 1016-XX.....		Spares package - Lift support Comprising items 2, 7 x2, 8 x2, 9 x2, 10 x2, 16, 18, 20 x3, 22 x2
	KPS 1017-XX.....		Spares package - Lift frame Comprising items 1, 7 x2, 8 x2, 9 x2, 10 x2, 11 x2, 12, 13, 20 x3
	KPS 1019.....		Spares package - Top end bearing Comprising items 14, 15, 16, 18, 20 x3
	KPS 3017.....		Spares package - Front casting Comprising items 14, 15, 16, 18, 19, 23, 25 x2
	KPS 3018.....		Spares package - Scale jib (standard) Comprising items 3, 17 x2, 21, 30, 31 x2, 32 x3, 39, 40, 41 x2
	KPS 3019.....		Spares package - Scale jib (extended) Comprising items 3, 17 x2, 21, 30, 31 x2, 32 x3, 39, 40, 41 x2
	KPS 3027.....		Spares package - Friction washer (Lift frame) (not for PPP) Comprising items 7 x2, 8 x2, 9 x2, 10 x2
	KPS 1027.....		Spares package - Friction washer (Pintle) Comprising items 16, 18

D - Scale Jib & 4 Point Spreader Bar

P1461/4



E - P.P.P. Jib and 4 point spreader bar

Note: Always quote Serial number of lifter, and specify Quantity, Part Number, description and colour (if applicable) when ordering spares.

Note: ** in listed part number refers to country code

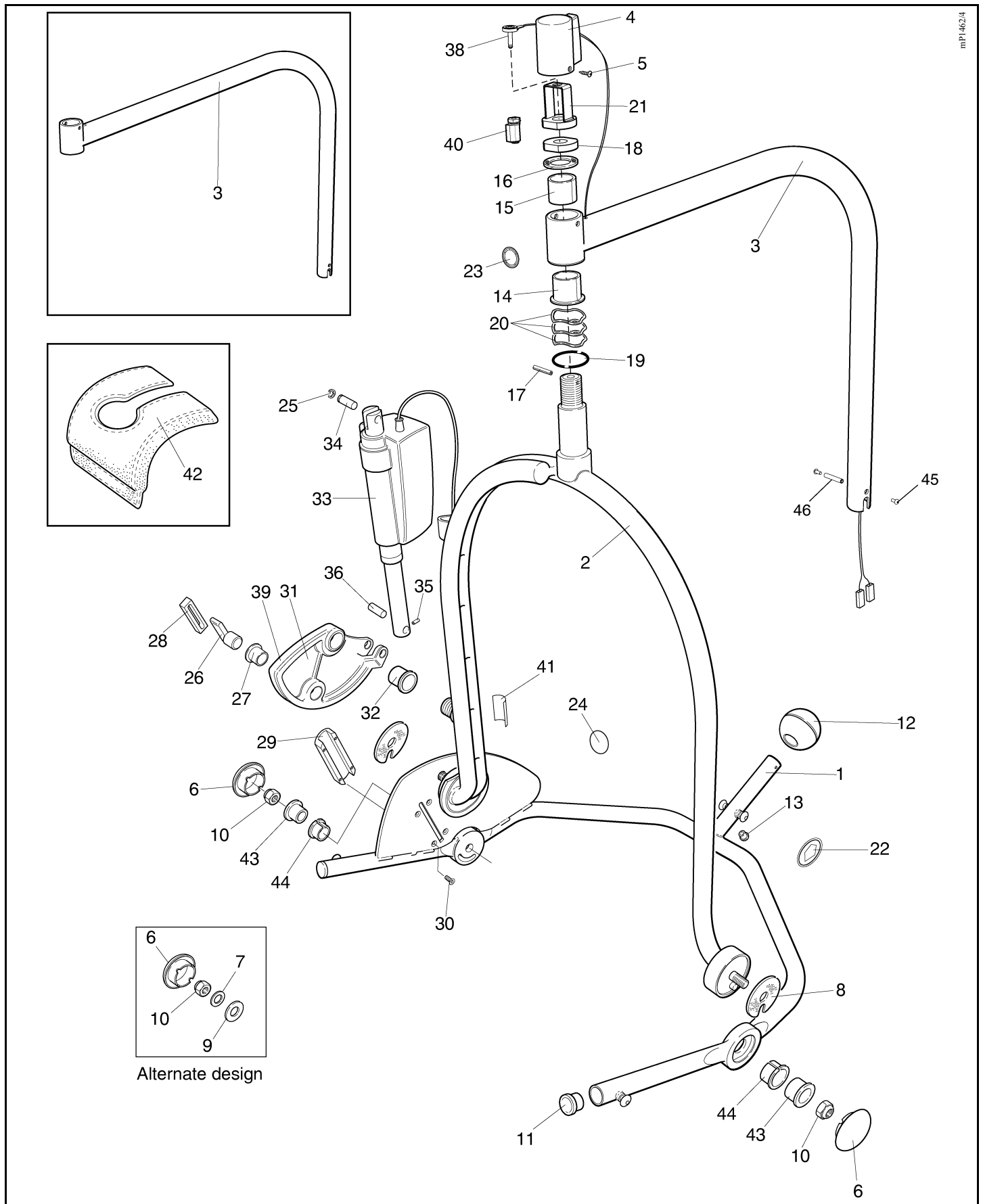
Note: .XX in listed part number refers to colour code suffix

Key to colour suffix: .04 - White, .06 - Beige, .11 - Lilac, .16 - Sapphire blue, .20 - Grey, .21 - Dark Green, .23 - Yellow, .25 - bright Green

Item	Part Number	Qty	Description
1	KPX67080.XX	1	Lift frame
	KPX67510.XX	1	Lift frame (introduced May 2002)
2	KPX67110.XX	1	Lift support
3	KPX60030.20	1	Jib - standard
	KPX60200.20	1	Jib - extended
4	KPX15880.20	1	Extension cover - PPP
5	AX28220.0	2	Screw - pozi pan head M4 x 5mm long
6	MX01460.20	2	Cap
7	MX01450.0	2	Washer - nylon (alternative design)
8	KPX67640.0	2	Friction washer (introduced May 2002)
9	GX20460.0	2	Disc spring washer (alternative design)
10	AX01201.0	2	Nut - nyloc thin M10
11	KPX20310.20	2	End plug
12	KPX67120.20	1	Hand grip knob
13	KMX01080.0	1	Plug
14	KMX00360.0	1	Flanged bush
15	KMX00370.0	1	Bush
16	KMX00310.0	1	Friction disc
17	CX15360.0	1	Spirol pin - 4mm diameter x 24mm long
18	KPX80582-00	1	Lock nut
19	KRX21100.0	1	'O' ring
20	KRX21110.0	3	Bearing spring
21	KPX80554-00	1	PPP locknut
22	KPX20610.0	2	Label - SWL 200kg (440 lbs) (standard jib)
22	KPX01600.0	2	Label - SWL 130kg (286 lbs) (extended jib)
23	LBX02460.0	1	Label - sling size guide
24	LBX05550.0	1	Label - wet environment
25	KPX67210.0	1	'E' clip
26	KPX67070.0	1	Axle slider
27	LBX03080.0	1	Flanged bush
28	KPX67170.0	1	Slider
29	KPX67270.20	1	Track
30	LBX05750.0	4	Screw - socket csk M5 x 12mm long
31	KPX67040.XX	1	Lever
32	KKX55590.0	1	Flanged bush
33	KPX67140.0	1	Actuator
34	KPX67200.0	1	Actuator pin
35	BX07930.0	1	Spirol pin - 3mm diameter x 18mm long
36	KPX67150.0	1	Actuator pin - lower
37	-		

continued...

E - P.P.P. Jib and 4 point spreader bar



continued...

E - P.P.P. Jib and 4 point spreader bar

Note: Always quote Serial number of lifter, and specify Quantity, Part Number, description and colour (if applicable) when ordering spares.

Note: ** in listed part number refers to country code

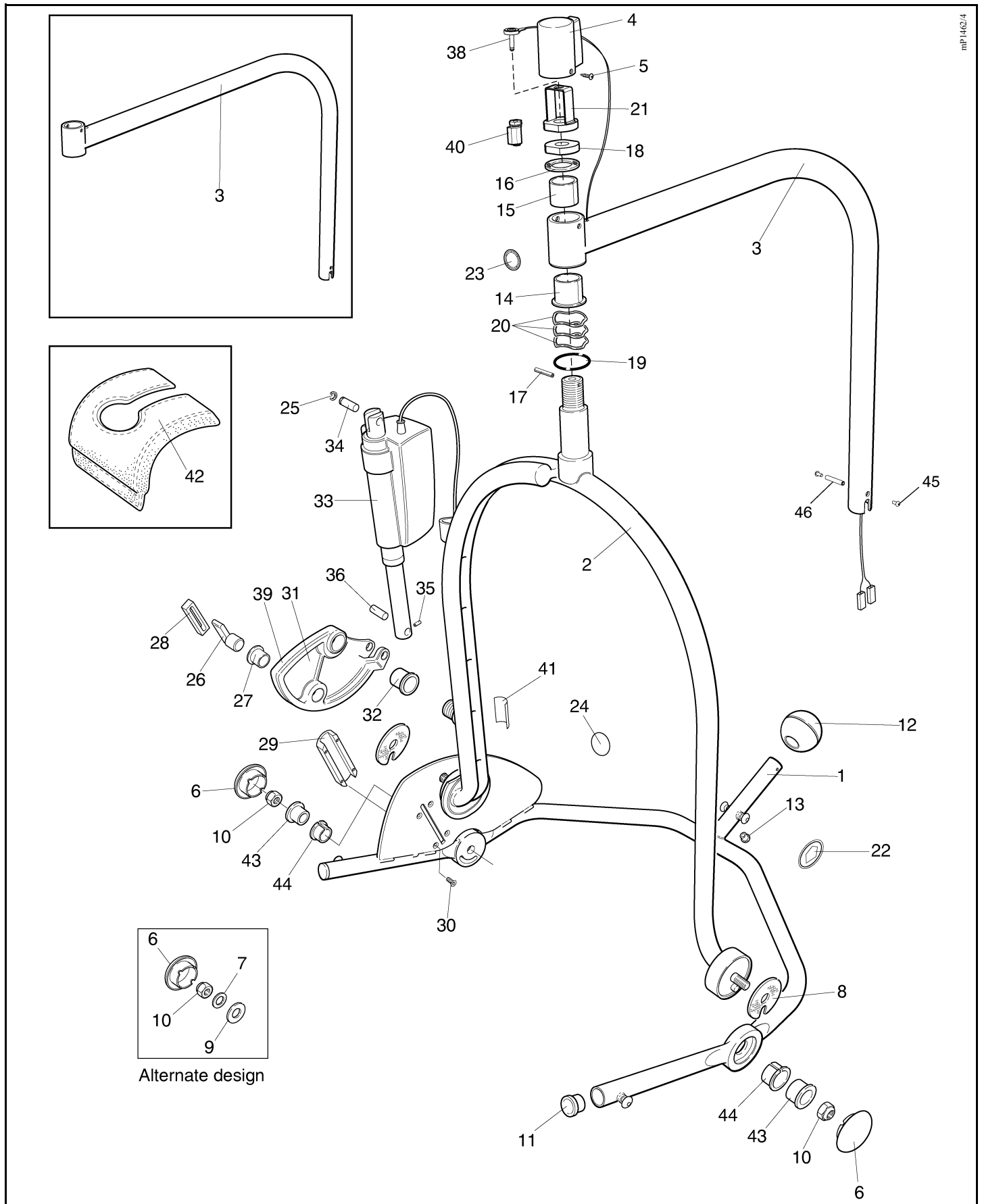
Note: .XX in listed part number refers to colour code suffix

Key to colour suffix: .04 - White, .06 - Beige, .11 - Lilac, .16 - Sapphire blue, .20 - Grey, .21 - Dark Green, .23 - Yellow, .25 - bright Green

Item	Part Number	Qty	Description
38	KPX67290.0	1	Audio plug loom
	KPX67370.0	1	Audio plug loom (extended)
39	KPX67420.0	1	Rubbing strip
40	KPX67800.0	1	Audio socket
41	KPX67480.0	1	Label - read operating instructions
42	KPX20690.0	1	Cover (option)
43	KPX67500.0	2	Bearing sleeve (introduced May 2002)
44	KPX67540.0	2	Shouldered bush (introduced May 2002)
45	KPX81306.0	2	Screw, socket button head M4
46	KPX81307.0	1	Spacer
	KPS 3020-XX		Spares package - PPP Lift frame Comprising items 1, 8 x2, 10 x2, 11 x2, 12, 13, 43 x2, 44 x2
	KPS 3021-XX		Spares package - Lift support (alternate design) Comprising items 2, 7 x2, 8 x2, 9 x2, 10 x2, 16, 17, 22 x2, 24, 41
	KPS 3031-XX		Spares package - Lift support Comprising items 2, 8 x2, 10 x2, 16, 17, 22 x2, 24, 41, 43 x2, 44 x2
	KPS 1019		Spares package - Top end bearing Comprising items 14, 15, 16, 17, 20 x3
	KPS 3022		Spares package - Jib (standard PPP) Comprising items 3, 14, 15, 16, 17, 45 x2, 46
	KPS 3023		Spares package - Jib (extended PPP) Comprising items 3, 14, 15, 16, 17, 45 x2, 46
	KPS 3024		Spares package - Actuator replacement Comprising items 25, 33, 34, 35, 36
	KPS 3025-XX		Spares package - Lever and bearings Comprising items 26, 27, 28, 29, 30 x4, 31, 32, 39
	KPS 3026		Spares package - Track and slider Comprising items 27, 28, 29, 30 x4, 32
	KPS 1027		Spares package - Friction washer (Pintle) Comprising items 16, 17

continued...

E - P.P.P. Jib and 4 point spreader bar



mp1462/4

6 7 9 10
Alternate design

continued...

F - Scale P.P.P. Jib and 4 point spreader bar

Note: Always quote Serial number of lifter, and specify Quantity, Part Number, description and colour (if applicable) when ordering spares.

Note: ** in listed part number refers to country code

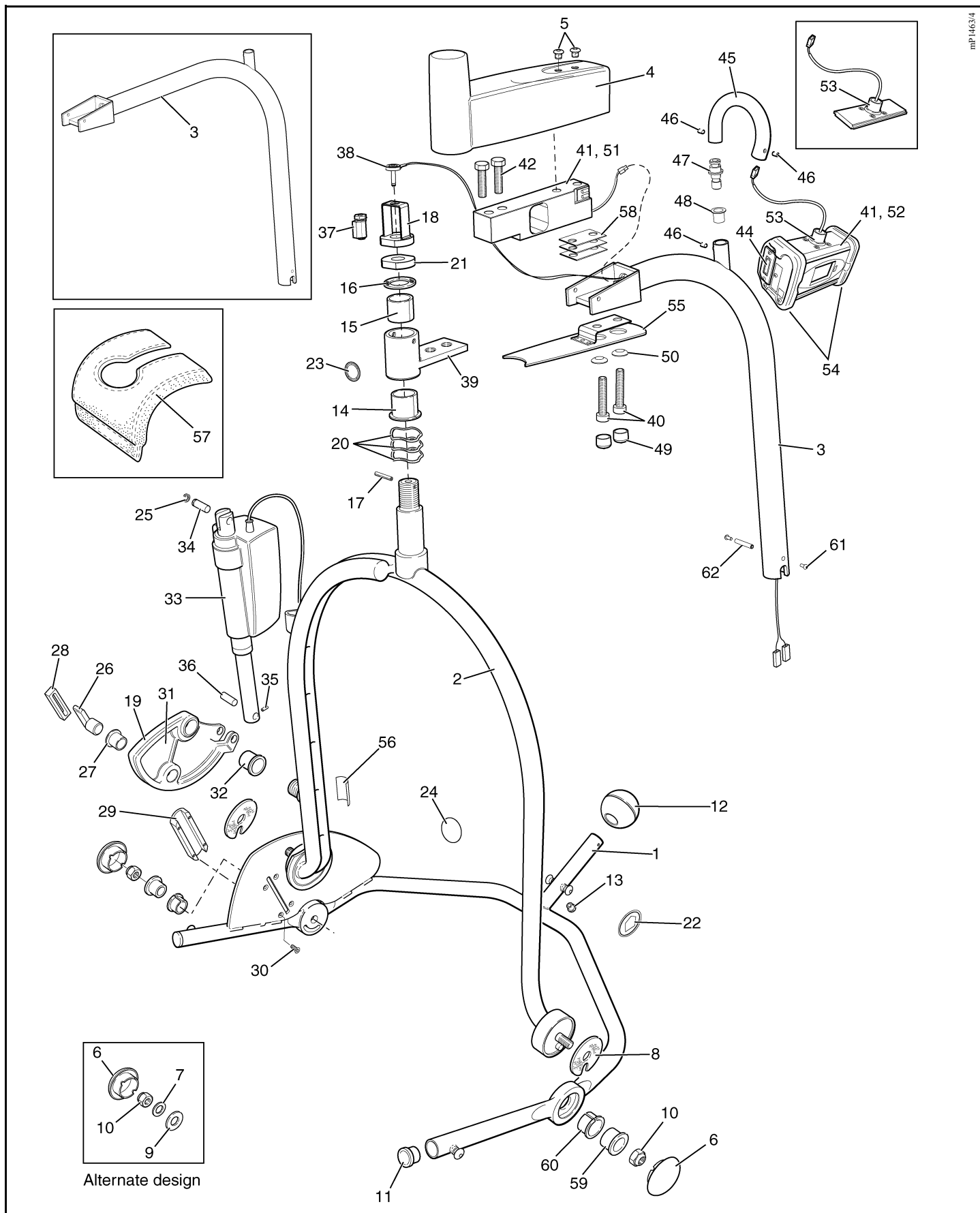
Note: .XX in listed part number refers to colour code suffix

Key to colour suffix: .04 - White, .06 - Beige, .11 - Lilac, .16 - Sapphire blue, .20 - Grey, .21 - Dark Green, .23 - Yellow, .25 - bright Green

Item	Part Number	Qty	Description
1	KPX67510.XX	1	Lift frame (introduced May 2002)
2	KPX67110.XX	1	Lift support
3	KPX67710.20	1	Jib - scale
	KPX67810.20	1	Jib - scale (extended)
4	KPX67350.20	1	Load cell cover
5	KPX60370.0	2	Screw - scale cover
6	MX01460.20	2	Cap
7	MX01450.0	2	Washer - nylon (alternative design)
8	KPX67640.0	2	Friction washer
9	GX20460.0	2	Disc spring washer (alternative design)
10	AX01201.0	2	Nut - nyloc thin M10
11	KPX20310.20	2	End plug
12	KPX67120.20	1	Hand grip knob
13	KMX01080.0	1	Plug
14	KMX00360.0	1	Flanged bush
15	KMX00370.0	1	Bush
16	KMX00310.0	1	Friction disc
17	CX15360.0	1	Spirol pin - 4mm diameter x 24mm long
18	KPX80554-00	1	PPP locknut
19	KPX67420.0	1	Rubbing strip
20	KRX21110.0	3	Bearing spring
21	KX80582-00	1	Locknut
22	KPX20610.0	2	Label - SWL 200kg (440 lbs) (standard jib)
22	KPX01600.0	2	Label - SWL 130kg (286 lbs) (extended jib)
23	LBX02460.0	1	Label - sling size guide
24	LBX05550.0	1	Label - wet environment
25	KPX67210.0	1	'E' clip
26	KPX67070.0	1	Axle slider
27	LBX03080.0	1	Flanged bush
28	KPX67170.0	1	Slider
29	KPX67270.20	1	Track
30	LBX05750.0	4	Screw - socket csk M5 x 12mm long
31	KPX67040.XX	1	Lever
32	KKX55590.0	1	Flanged bush
33	KPX67140.0	1	Actuator
34	KPX67200.0	1	Actuator pin
35	BX07930.0	1	Spirol pin - 3mm diameter x 18mm long
36	KPX67150.0	1	Actuator pin - lower
37	KPX67800-00	1	Audio socket
38	KPX67290-00	1	Phono plug loom
	KPX67370.0	1	Audio plug loom (extended)

continued...

F - Scale P.P.P. Jib and 4 point spreader bar



continued...

F - Scale P.P.P. Jib and 4 point spreader bar

Note: Always quote Serial number of lifter, and specify Quantity, Part Number, description and colour (if applicable) when ordering spares.

Note: ** in listed part number refers to country code

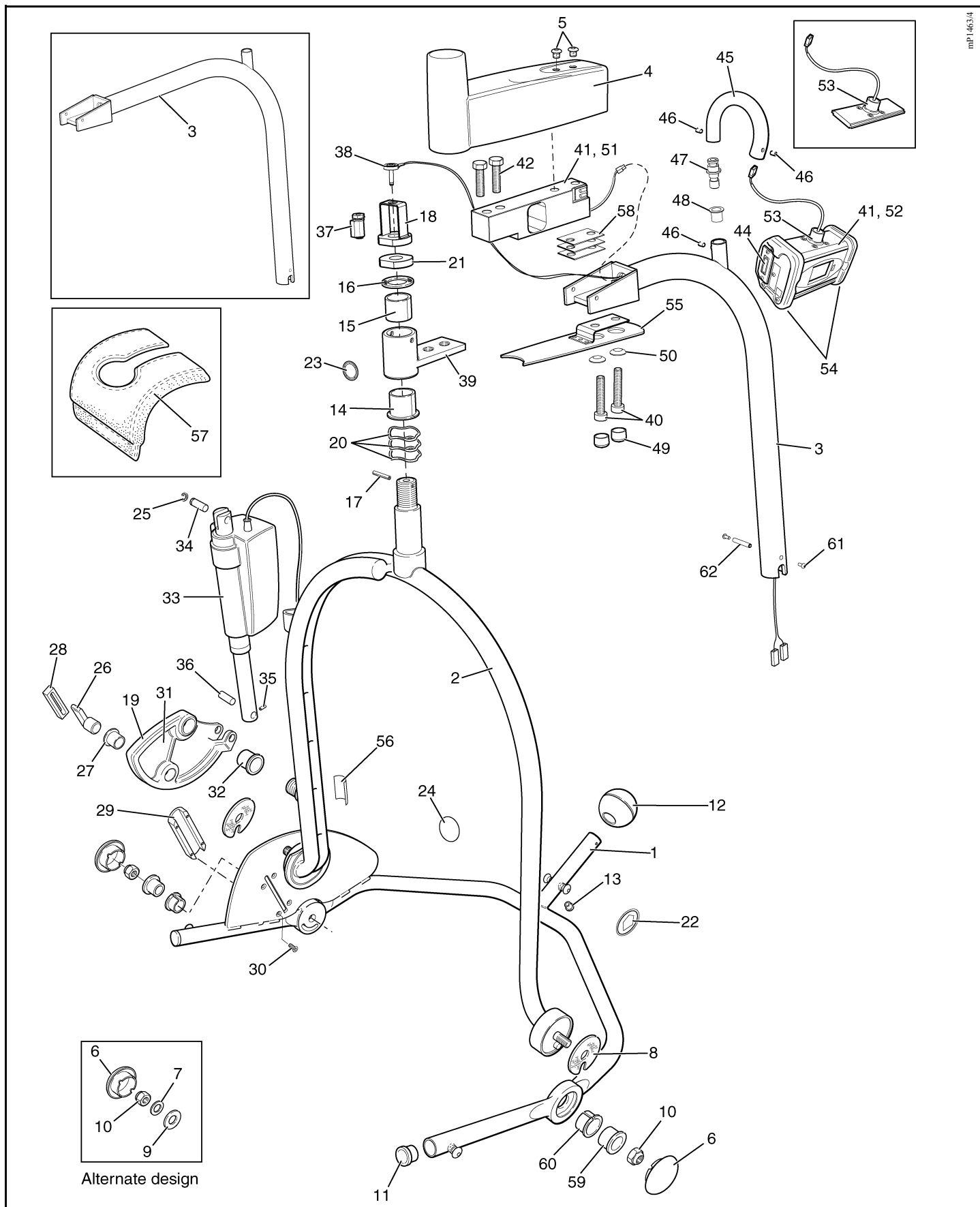
Note: .XX in listed part number refers to colour code suffix

Key to colour suffix: .04 - White, .06 - Beige, .11 - Lilac, .16 - Sapphire blue, .20 - Grey, .21 - Dark Green, .23 - Yellow, .25 - bright Green

Item	Part Number	Qty	Description
39	KPX15220.20	1	Front end pivot - scale
40	KPX15660.0	2	Cap screw - M12 x 50mm long
41	KPX60190-00	1	Scale kit 2003
42	KX50360.0	2	Bolt - hex head M12 x 55mm long
43	KTX05390.0	1	Battery holder (not illustrated)
44	KTX05570.0	1	Battery cover c/w screws and label
45	KPX60430-XX	1	Tube - "swan neck"
46	LBX00820.0	3	Set screw - M5 x 6mm long
47	KPX60440-00	1	Tube insert
48	KPX60320.0	1	Bush
49	KPX67740-XX	2	Flexible cap
50	KPX67750-00	2	Alignment washer
51	KRX20790.0	1	Load Cell
52	KPX60380.0	1	Display (complete)
53	KPX60400.0	1	Pivot piece kit
54	KPX60390.0	1	End cap kit (LH & RH)
55	KPX67770-XX	1	Cover plate
56	KPX67480.0	1	Label - warning read operating instructions
57	KPA20690.0	1	Cover - optional
58	KPX60450-00	3	Spacer - tapered
59	KPX67500.0	2	Bearing sleeve (introduced May 2002)
60	KPX67540.0	2	Shouldered bush (introduced May 2002)
61	KPX81306.0	2	Screw, socket button head M4
62	KPX81307.0	1	Spacer
	KPS 1019.....		Spares package - Top end bearing Comprising items 14, 15, 16, 17, 20 x3
	KPS 3017.....		Spares package - Front casting Comprising items 14, 15, 16, 17, 23, 39, 42 x2, 58
	KPS 3018.....		Spares package - Scale jib (standard) Comprising items 3, 21 x2, 48, 49, 50 x2, 55, 58 x3, 61 x2, 62
	KPS 3019.....		Spares package - Scale jib (extended) Comprising items 3, 21 x2, 48, 49, 50 x2, 55, 58 x3, 61 x2, 62
	KPS 3020-XX.....		Spares package - PPP Lift frame Comprising items 1, 8 x2, 10 x2, 11 x2, 12, 13, 59 x2, 60 x2

continued...

F - Scale P.P.P. Jib and 4 point spreader bar



continued...

F - Scale P.P.P. Jib and 4 point spreader bar

Note: Always quote Serial number of lifter, and specify Quantity, Part Number, description and colour (if applicable) when ordering spares.

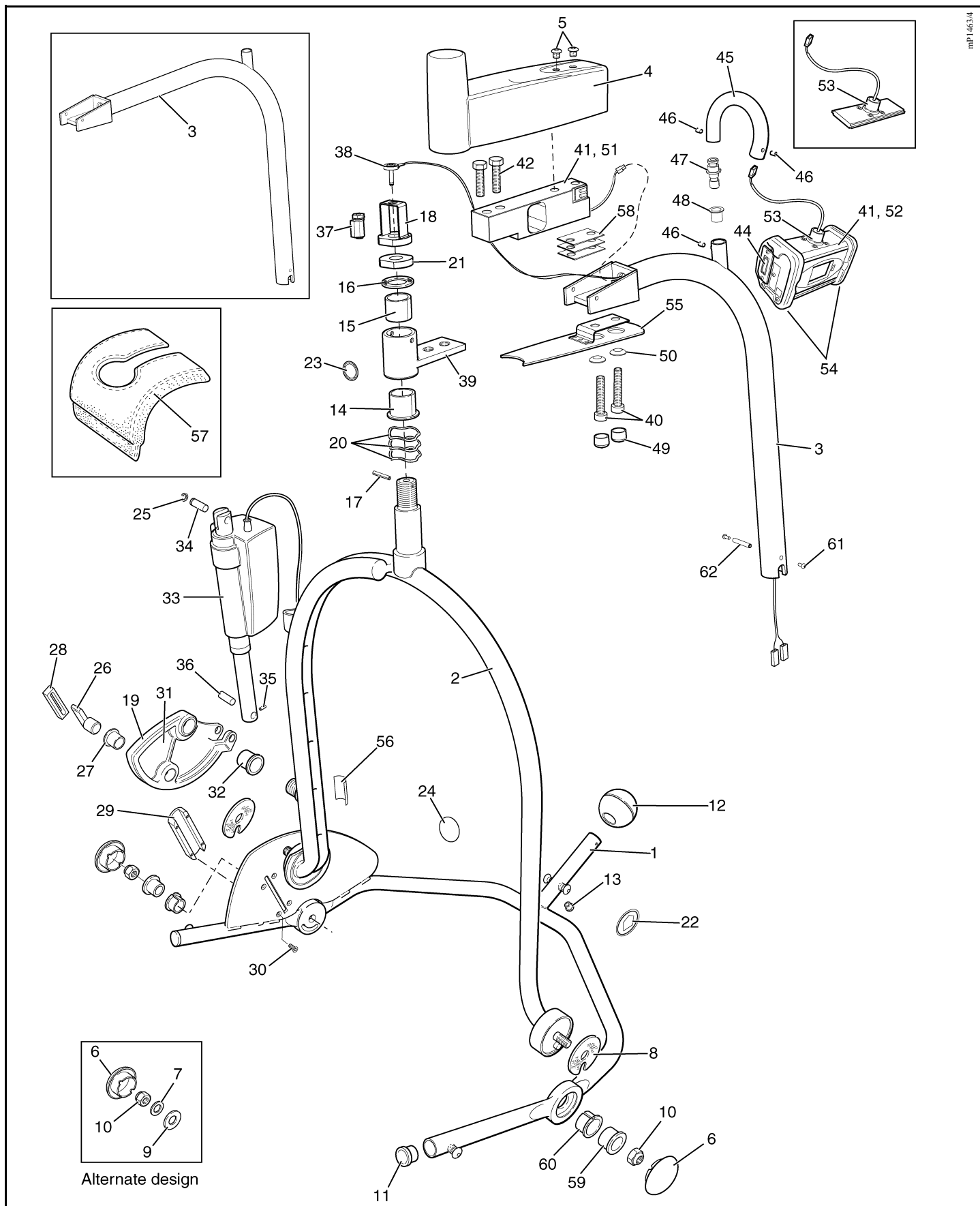
Note: ** in listed part number refers to country code

Note: .XX in listed part number refers to colour code suffix

Key to colour suffix: .04 - White, .06 - Beige, .11 - Lilac, .16 - Sapphire blue, .20 - Grey, .21 - Dark Green, .23 - Yellow, .25 - bright Green

Item	Part Number	Qty	Description
	KPS 3021-XX.....		Spares package - Lift support (alternate design) Comprising items 2, 7 x2, 8 x2, 9 x2, 10 x2, 16, 17, 22 x2, 24, 41
	KPS 3031-XX		Spares package - Lift support Comprising items 2, 8 x2, 10 x2, 16, 17, 22 x2, 24, 41, 59x2, 60 x2
	KPS 3024.....		Spares package - Actuator replacement Comprising items 25, 33, 34, 35, 36
	KPS 3025-XX.....		Spares package - Lever and bearings Comprising items 19, 26, 27, 28, 29, 30 x4, 31, 32
	KPS 1027.....		Spares package - Friction washer (Pintle) Comprising items 16, 17

F - Scale P.P.P. Jib and 4 point spreader bar



mP1463/4

G - Combi & 4pt Spreader Bar Fittings

Note: Always quote Serial number of lifter, and specify Quantity, Part Number, description and colour (if applicable) when ordering spares.

Note: ** in listed part number refers to country code

Note: .XX in listed part number refers to colour code suffix

Key to colour suffix: .04 - White, .06 - Beige, .11 - Lilac, .16 - Sapphire blue, .20 - Grey, .21 - Dark Green, .23 - Yellow, .25 - bright Green

Item	Part Number	Qty	Description
1	KPA3000-21	1	4 point hanger assy (complete)
2	KPS 1021	1	Teebar assy
3	KPX20350.0	2	Bush
4	KPX20360.0	2	Bush
5	LBX02460.0	1	Label - sling size guide
6	KPX02200.0	1	Label - correct location
7	KPX02210.0	1	Label - location arrow
8	KPX02220.0	1	Label - incorrect position
9	-	-	Label - barcode (not available as a spare)
10	AX01160.0	1	Label - CE
11	KPX20610.0	2	Label - SWL 200kg
12	KPX20430.0	1	Leaf spring
13	KPX20420.0	1	Locking clip
14	AX25140.0	1	Screw - socket button head M6 x 16mm long
15	KMX0310.0	1	Friction disc
16	CX15360.0	1	Spirol pinb
17	KMX00260.0	4	Label - suspension point
18	KRX01560.0	1	Label - SWL 160kg
19	LBX05550.0	1	Label - wet enviroment product
20	KPA3060-21	1	Stretcher support frame assy (complete)
21	KPA3010-21	1	2 point spreader bar assy (complete)
	KPS 1020.....		Spares package - Locking clip Comprising items 12, 13, 14
	KPS 1021.....		Spares package - Teebar Comprising items 2, 3 x2, 4 x2, 5, 6, 8, 15, 16
	KPS 2000		Spares package - Teebar bushes Comprising items 3 x2, 4 x2
	KPS 1043		Spares package - Labels (Teebar and 4 point spreader bar) Comprising items 5, 6, 7, 8, 10, 11 x2
	KPS 1044		Spares package - Labels (stretcher support frame) Comprising items 7, 10, 18, 19
	KPS 1045		Spares package - Labels (2 point spreader bar) Comprising items 7, 10, 11

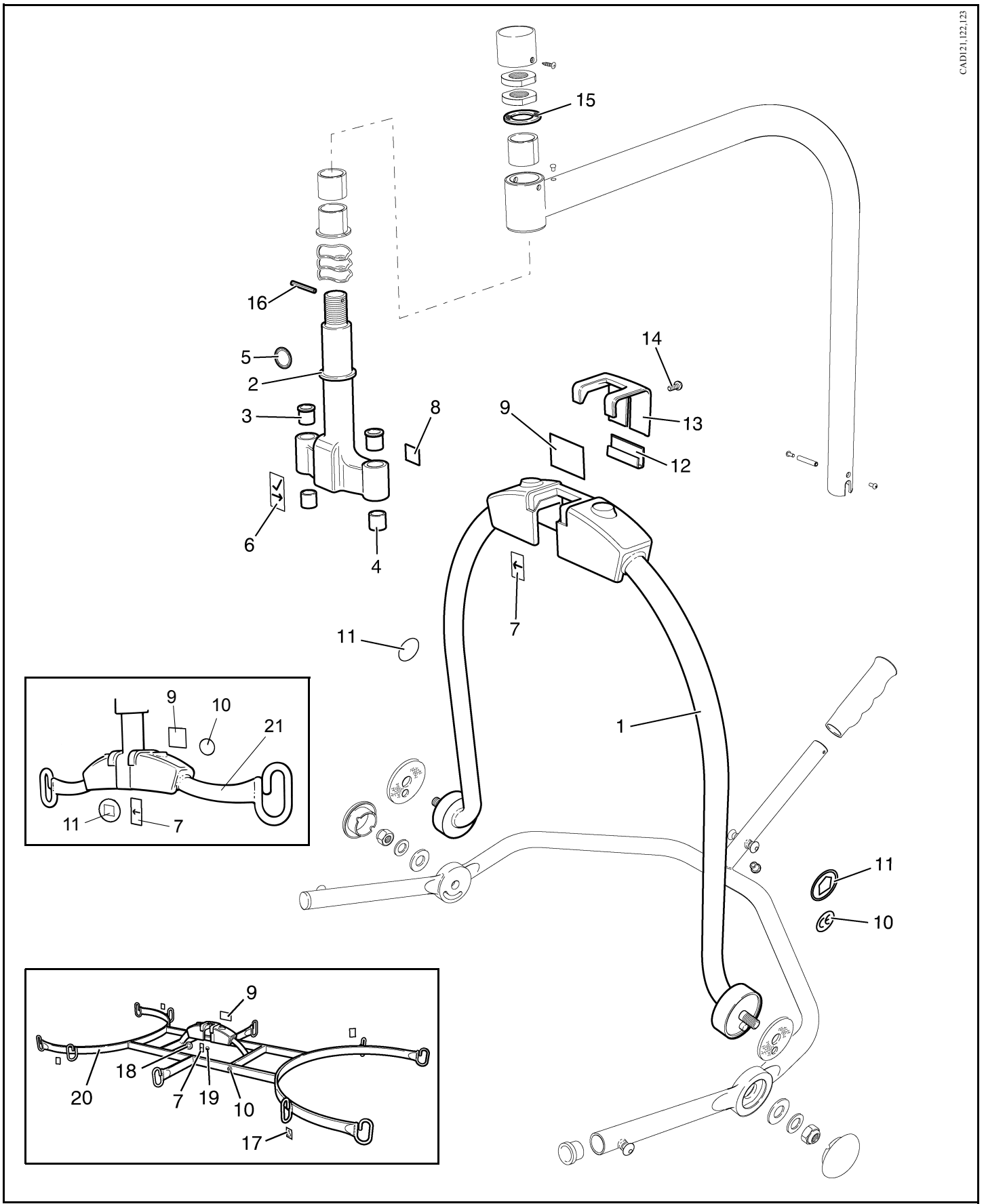
Combi attachment is **NOT** for use with Extended Jib or PPP models.

For additional parts not itemised see section 'C - Jib & 4 Point Spreader Bar' or 'D - Scale Jib & 4 Point Spreader Bar'.

Standard Jib shown for reference.

G - Combi & 4pt Spreader Bar Fittings

CAD121,122,123



H - Electrics (standard and P.P.P. jib lifters)

Note: Always quote Serial number of lifter, and specify Quantity, Part Number, description and colour (if applicable) when ordering spares.

Note: ** in listed part number refers to country code

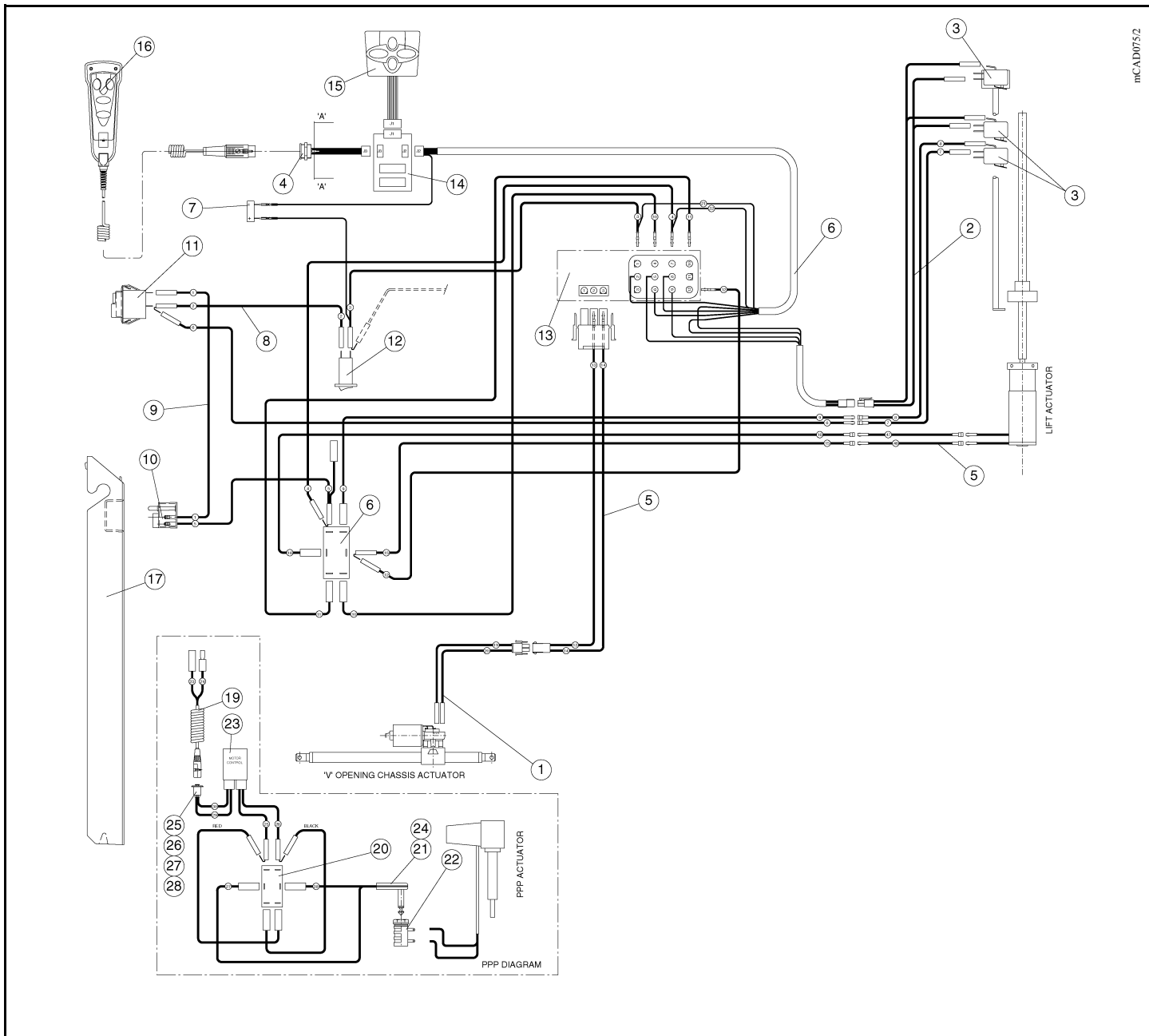
Note: .XX in listed part number refers to colour code suffix

Key to colour suffix: .04 - White, .06 - Beige, .11 - Lilac, .16 - Sapphire blue, .20 - Grey, .21 - Dark Green, .23 - Yellow, .25 - bright Green

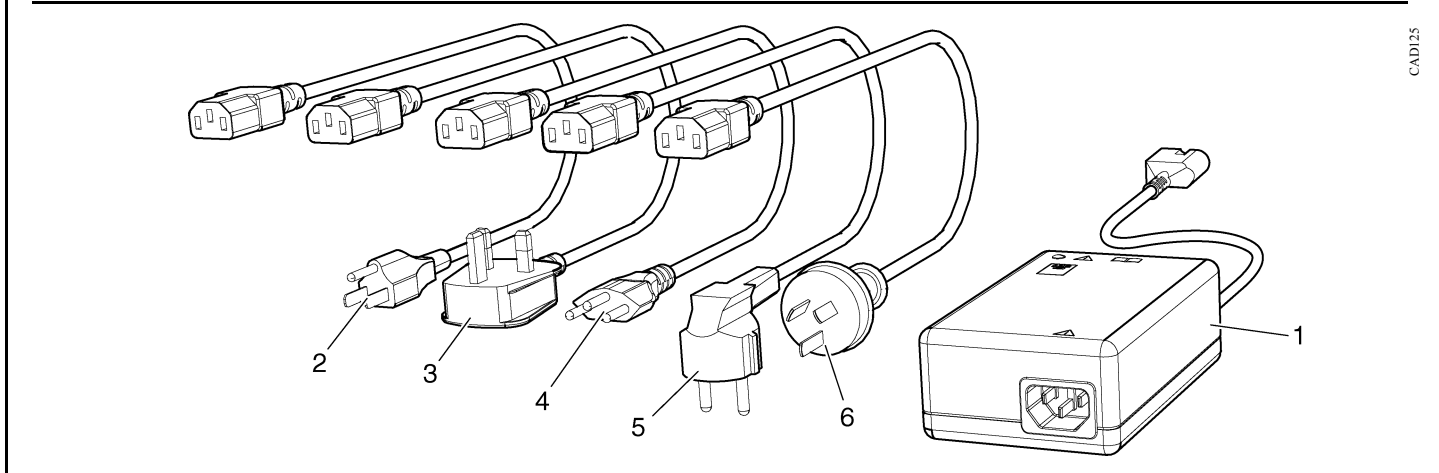
Item	Part Number	Qty	Description
1	KPX10460.0	1	Cable assembly No.1
2	KPX50200.0	1	Cable assembly No.2
3	KRX00640.0	3	Microswitch V3 lever
4	KPX01020.0	1	Cable assembly No.4
5	KPX50540.0	1	Cable assembly No.5
6	KPX50220.0	1	Cable assembly No.6
7	KPX01620.0	1	Piezo buzzer
8	KPX00660.0	1	Wire No.2
9	KPX00650.0	1	Wire No.1
10	KPX01670.20	1	Battery terminal - male
11	KKX10730.0	1	Stop/Start switch
12	KX57110.0	1	Thermal circuit breaker 15A
13	KPX50690.0	1	PCB - motor control
14	KPX00370.0	1	Hours & battery condition indicator
15	KPX00610.0	1	Membrane switch panel
16	KPX00510.0	1	Handset
17	KPA0100	1	Battery (24V 5Ah)
18	-		
19	KPX67300.0	1	Curly cable assembly (PPP only)
20	KPX67310.0	1	Cable assembly No.7 (PPP only)
21	KPX67290-00	1	Audio plug loom (PPP only)
22	KPX67800-00	1	Audio plug socket (PPP only)
23	KPX67390.0	1	PCB - motor control (PPP only)
24	KPX67370.0	1	Audio plug loom - extended (PPP only)
25	KPX67430.0	1	Wire assembly - socket to PCB (PPP only)
26	JX69690.0	2	Screw - M3 x 10mm long (PPP only)
27	JX69710.0	2	Washer - M3 (PPP only)
28	JX69700.0	2	Nut - M3 (PPP only)

Item	Part Number	Qty	Description
1	KPA0101-XX	1	Battery charger unit including country specific plug and cable
2	LCA81428-US	1	Battery charger plug and cable - U.S.A.
3	LCA81428-GB	1	Battery charger plug and cable - United Kingdom
4	LCA81428-CH	1	Battery charger plug and cable - Switzerland
5	LCA81428-EU	1	Battery charger plug and cable - Europe
6	LCA81428-AU	1	Battery charger plug and cable - Australia

H - Electrics (standard and P.P.P. jib lifters)



mCADW75/2



CAD125

Notes

Notes

AUSTRALIA
ARJO Hospital Equipment Pty. Ltd.
154 Lytton Road
Bulimba
Brisbane
QLD, 4171
Tel. (61) 7 3395 6311
Fax. (61) 7 3395 6712

SCANDINAVIA
Sverige
ARJO SCANDINAVIA AB
Box 61, 241 21 Eslov
Tel. 0413-645 00
Fax 0413-645 83
E-post: kundservice@arjo.se

Danmark
ARJO SCANDINAVIA
Postboks 51, 4632 Bjæverskov
Tel. 45 93 27 37
Fax. 45 93 27 39
E-post: kundservice@arjo.se

Norge
ARJO SCANDINAVIA
Enebakkveien 117 d, 0680 Oslo
Tel. 98 28 11 70
Fax. 23 05 11 99
E-post: kundservice@arjo.se

BELGIQUE / BELGIË
ARJO Hospital Equipment nv/sa
Terneseselei 248
B-2160 WOMMELGEM
Tel : 03 353 91 00
Fax : 03 353 91 01
Email: info@arjo.be

CANADA
ARJO Canada Inc.
1575 South Gateway Road
Unit C
Mississauga, ONTARIO
L4W 5J1
Tel. 1 800 665 4831
Fax. 1 800 309 1116

ČESKÁ REPUBLIKA
ARJO Hospital Equipment s.r.o.
Strmá 35
CZ-616 00 BRNO
Tel. 549 254 252
Fax. 541 213 550

DEUTSCHLAND
ARJO Systeme für Rehabilitation
GmbH
Christof-Ruthof-Weg 6
55252 Mainz-Kastel
Tel.: 06134 186 0
Fax: 06134 186 160
E-mail: info@arjo.de

ESPAÑA
ARJO SPAIN, S.A.
C/ San Rafael, nº 6
28108 ALCOBENDAS (MADRID)
SPAIN
Tel. 00 34 91 490 0636
Fax. 00 34 91 490 0637

FRANCE
ARJO Equipements Hospitaliers sa
45, avenue de l'europe
Eurocit BP133
F-59436 RONCQ CEDEX
FRANCE
Tel: 03 20 28 13 13
Fax: 03 20 28 13 14
Email: info@arjo.fr

GREAT BRITAIN
ARJO.
St. Catherine Street
Gloucester, GL1 2SL
ENGLAND U.K.
Tel. (08702) 430430
Fax. (01452) 428344

ARJO (Ireland) Ltd
Unit 6B
Calmount Park
Dublin 12
Eire
Tel. 00 35 3145 65565
Fax. 00 35 3145 65575

HONG KONG
ARJO Far East Ltd.
1001-3 APEC Plaza,
49 Hoi Yuen Road,
Kwun Tong, Kowloon,
HONG KONG
Tel. 852 2508 9553
Fax. 852 2508 1416

ITALIA
ARJO Italia S.p.A.
Via Poggio Verde, 34
00148 ROMA
Tel. 06 6566356 - 57
Fax. 06 65663212
promo@arjo.it

NEDERLAND
ARJO NEDERLAND B.V.
De Blomboogerd 8
4003 BX TIEL
Postbus 6116
4000 HC TIEL
Tel: 0344 64 08 00
Fax: 0344 64 08 85
E-mail: info@arjo.nl

ÖSTERREICH
ARJO GmbH
Föhrenweg 5
A-6065 THAUR
Tel. 05223 493350
Fax. 05223 49335075

ARJO Poland Sp. z o.o.
ul. Lirowa 27,
02-387 Warsaw,
Poland
tel./fax office: +48 22 882-06-26..28
tel./fax serive: +48 22 882-06-29

SCHWEIZ / SVIZZERA
ARJO INTERNATIONAL AG
Florenzstr. 1d,
Postfach 4023
BASEL
Tel. +41 61 373 26 89.
Fax. +41 61 373 11 00

SCHWEIZ
ARJO-SIC AG
Florenzstr. 1d
Postfach
4023 BASEL
Tel. 0041 61 337 97 77
Fax 0041 61 311 97 42

USA
ARJO, Inc.
50 North Gary Avenue
Roselle, IL 60172
Tel. 1-800-323-1245
Fax. 1-888-594-ARJO(2756)



www.ARJO.com

If your country is not listed here, please contact your local distributor, or ARJO
International AB, Box 61, S-241 21 ESÖLV, SWEDEN.
Tel +46 413 64500. Fax + 46 413 555586.

© ARJO MED. AB LTD



FM 21964
ISO 9001:2000



MD 76970
ISO 13485



EMS73184
ISO 14001



ARJO, UK Branch of ARJO MED AB LTD