



GBGuldmann Service and Information Console SW v. 1.3.0

User manual - vers. 7

CE

Guldmann™

Guldmann Service and Information Console

Item nos:

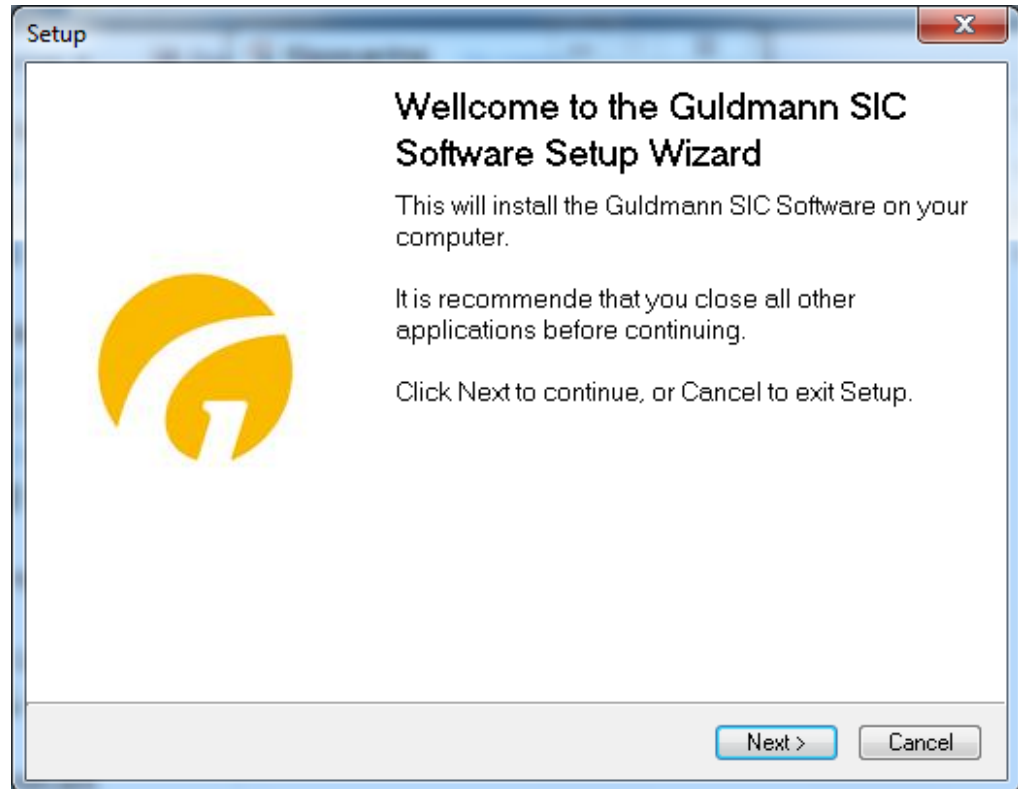
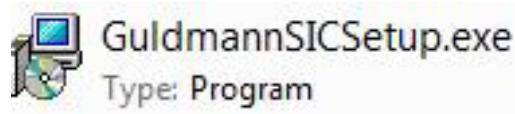
550640

1.0	Program installation	3
<hr/>		
2.0	Running the program for the first time	4
2.1	Install USB driver	4
2.2	Connecting the hoist	4
<hr/>		
3.0	CLM module	6
3.1	General information	6
3.2	Life span activity	6
3.3	Statistics	6
3.4	Importing CLM data into Excel spread sheet	8
<hr/>		
4.0	Service module	10
4.1	General information	10
4.2	Life span activity	10
4.3	Service information	11

1.0

Program installation

Run the installation wizard.



If you are a certified Guldmann technician, select the **“Technician version”** installation option to obtain access to the advanced program options. This option requires a special activation code. Contact Guldmann to obtain the activation code.

2.0 Running the program for the first time

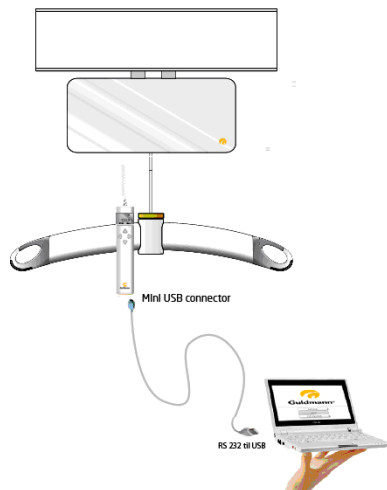
2.1 Install USB driver

Before you run the program for the first time you will need to install the USB cable driver.

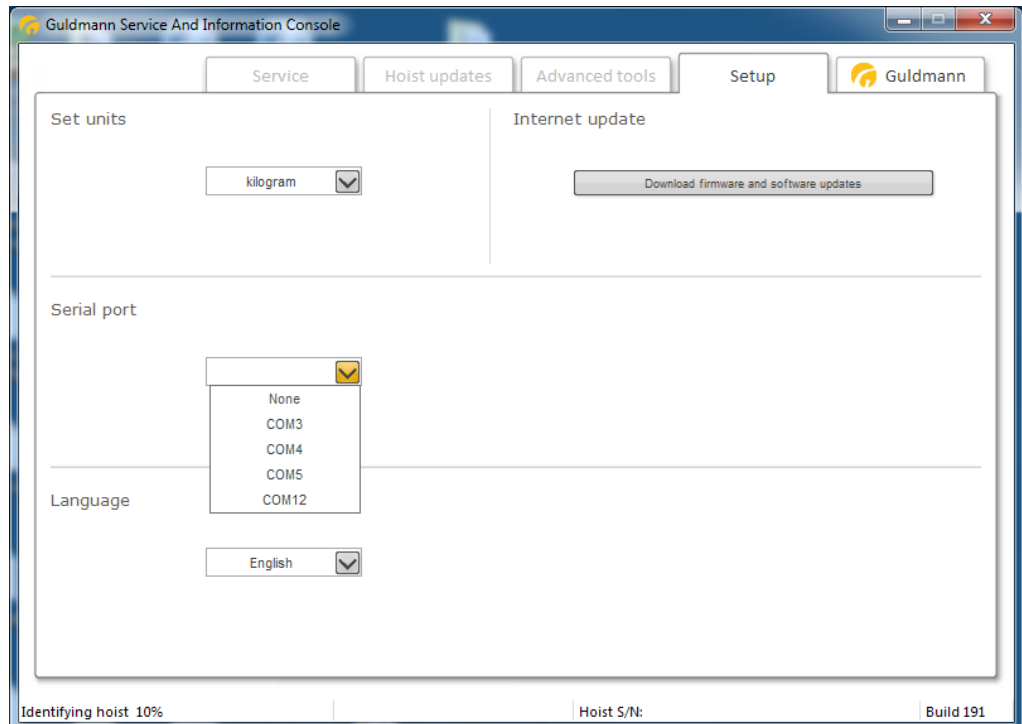
1. Locate the USB driver in the program folder: \Guldmann\Guldmann Service and Information Console\Drivers.

2.2 Connecting the hoist

1. Connect the hoist to the computer by means of the connection cable, Guldmann part number 550641.



2. Turn on hoist by pushing the hoist's hand control.
3. Open the Guldmann Service and Information Console program.
4. Select **setup** and then select
 - a. **Units** (Kilogram or Lbs)
 - b. Serial COM port (select from drop down list)
 - c. Language



5. After connection the program is ready to use, if not close down the program and open it again.

Depending on the installation type and hoist type, different functions will be available.

Available functions

Function	Technician	Assistant
CLM	(√)	(√)
Service	√	(√)
Hoist updates	√	
Advanced tools	√	
Setup	√	√

(√), depending on hoist configuration.

3.0 CLM module

The CLM module is only available if the connected hoist is equipped with the CLM module functionality. If this is available then certain changes can be made.

3.1 General information

Update time

This button sets the hoist time and date, to the current PC time and date. Hoist time and date is used for the registration of lifts.

Set hoist ID

This button makes it possible to change the hoist ID. The hoist ID is displayed on the hand control if a CLM module is installed.

3.2 Life span activity

These counters summarize information about the use of the hoist, since the first installation.

3.3 Statistics

These counters show information regarding the use of the hoist, since the last reset of these counters. See below

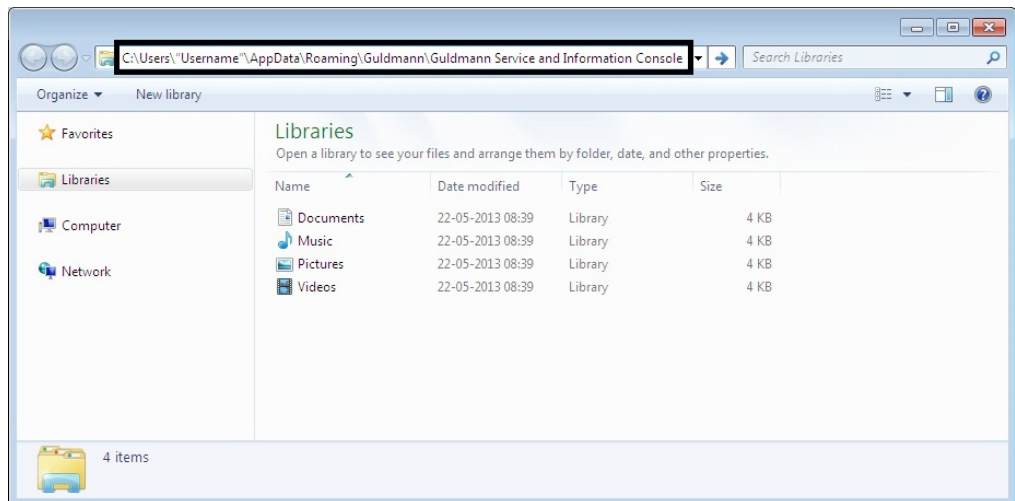
Reset Statistics

This button resets all statistic counters to 0. The CLM log is not changed.

Download CLM log

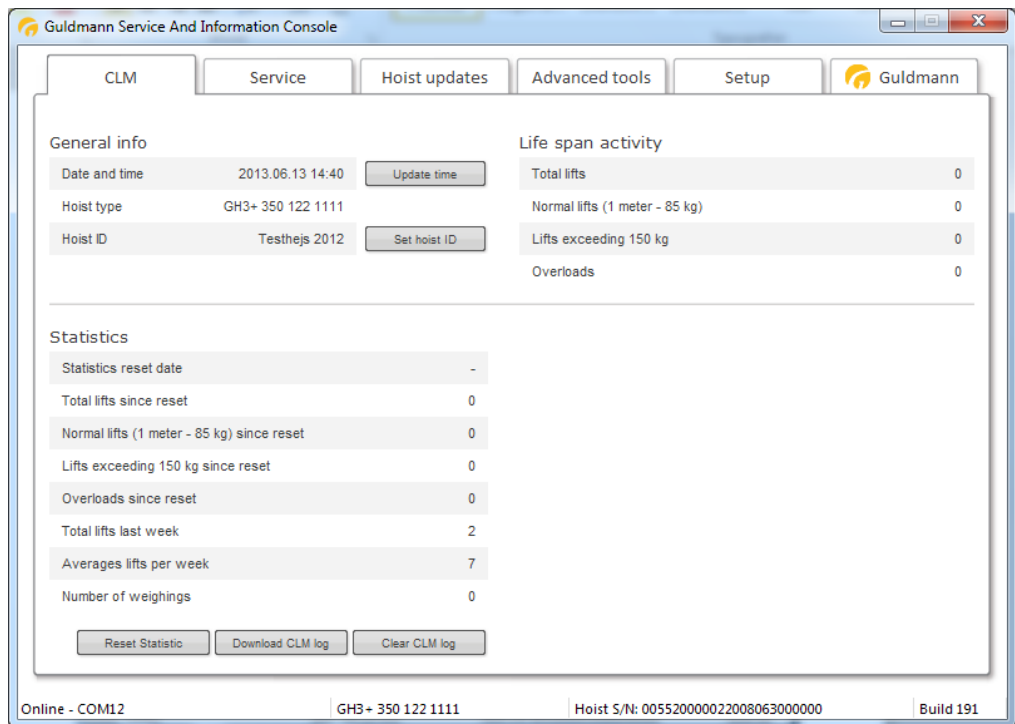
This button starts downloading of the hoist CLM log data. The log is stored in the Guldmann Service and Information Console program folder. The folder is by standard: C:\Users\%Username%\AppData\Roaming\Guldmann\Guldmann Service and Information Console

To easily find the folder, type in the path shown above in a Library-window.



Clear CLM log

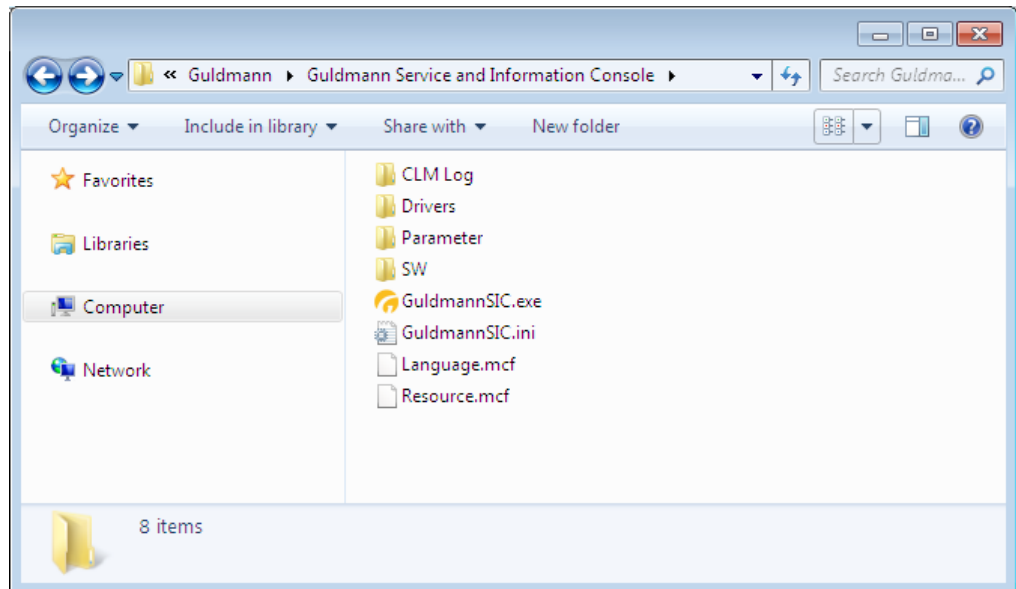
This button clears the CLM log data.



3.4

Importing CLM data into Excel spread sheet

The CLM data is stored in a folder named CLM Log. The folder is by standard located in the Guldmann Service and Information Console program folder. Each hoist will automatically create a subfolder named after the hoist's serial number when importing CLM data. The data can be imported into Excel for further use by following the steps below.



1. Open Excel
2. Select **“File”** – **“Open”**
3. Change filter type to All files (*.*)
4. Select the relevant log file.

	A	B	C	D	E	F	G	H	I	J	K	L
1	Hoist ID: Testhejs 2012											
2	Date	Time	Duration	Weight	Height							
3	30-05-2013	11:18:01	2	305,9	15							
4	30-05-2013	11:19:18	18	82,4	111							
5	01-01-2012	10:01:45	5	82,6	33							
6	01-01-2012	10:04:19	1	83,6	10							
7	01-01-2012	10:05:10	3	82,6	22							
8	01-01-2012	10:15:13	1	82,5	10							
9	01-01-2012	10:16:29	1	83,2	8							
10	01-01-2012	10:26:03	3	82,4	18							
11	01-01-2012	10:32:46	1	82,9	7							
12	01-01-2012	10:33:14	3	83,6	18							
13	01-01-2012	10:33:26	5	81,9	30							
14	01-01-2012	10:33:37	3	83,2	18							
15	01-01-2012	10:33:46	3	82,3	18							
16	01-01-2012	10:40:25	1	3,6	8							
17	01-01-2012	10:45:14	3	2,5	17							
18	01-01-2012	10:46:05	1	82,9	5							
19	01-01-2012	10:46:20	1	84,8	6							
20	01-01-2012	10:46:36	1	82,9	5							
21	01-01-2012	10:46:49	1	84,2	7							
22	01-01-2012	10:46:58	1	83	6							
23	01-01-2012	10:47:12	1	83,2	9							
24	10-06-2013	16:04:49	3	130,4	13							
25	10-06-2013	16:05:09	1	18,5	8							

The imported data is in the following format:

Column A: Lift date

Column B: Lift time

Column C: Lift duration in sec.

Column D: Lift weight in kg

Column E: Lift height in cm

Warning!

The integrated scale in GH3+ is not approved to determine mass in medical practice, including the weighing of patients in connection with health monitoring, diagnosis and medical treatment.

(The provisions for medical weighing are specified in accordance with EEC Directive 90/384).

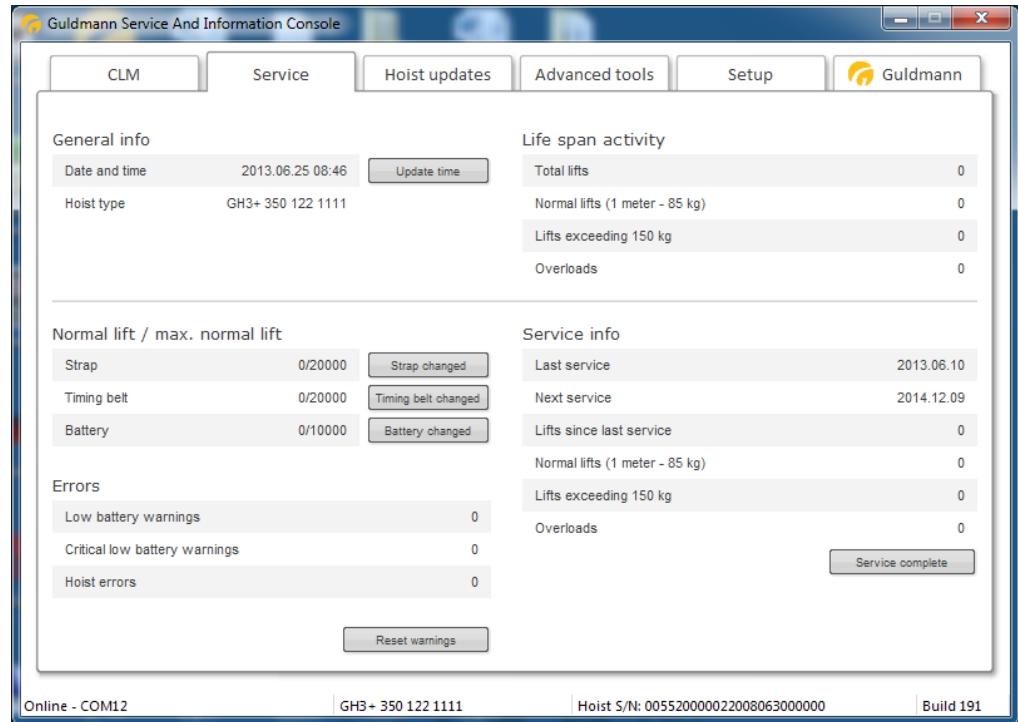
Any weight shown in the CLM can only be used as an indication even if the Hoist has a weighing module (load cell).

If the Hoist is without weighing module, the weight is estimated from the power consumption while lifting.

4.0

Service module

The service module is only available if the user has been equipped with technician user privileges.



4.1

General information

Update time

This button sets the hoist time and date, to the current PC time and date. Hoist time and date is used for the registration of lifts.

Hoist type

The currently connected hoist type.

4.2

Life span activity

These counters summarize information about the use of the hoist, since the first installation.

Strap counter and "Strap changed" button

This counter provides information regarding the expected remaining strap lifetime.

Counter format:

Number of lifts made by the current strap / Expected lifetime of the strap.
The strap should be changed if the number of lifts made by the current strap is close to the expected lifetime of the strap.

Timing belt counter

This counter provides information regarding the expected remaining timing belt(s) lifetime.

Counter format:

Number of lifts made by the current strap / Expected lifetime of the timing belt(s).

The timing belt(s) should be changed if the number of lifts made by the current timing belt(s) is close to the expected lifetime of the timing belt(s).

Battery counter

This counter provides information regarding the expected remaining battery lifetime.

Counter format:

Number of lifts made by the current battery / Expected lifetime of the battery.

The battery should be changed if the number of lifts made by the current battery is close to the expected lifetime of the battery.

Errors

These counters provide information regarding the number of errors which has occurred, since reset warning was pressed.

4.3

Service information

These dates and counters provide information about the use of the hoist.

| Time to care |

V. Guldmann A/S

Corporate Office:
Graham Bells Vej 21-23A
DK-8200 Aarhus N
Tel. +45 8741 3100
Fax +45 8741 3131
info@guldmann.com
www.guldmann.com

Guldmann Inc.

14401 McCormick Drive,
Unit A
Tampa, FL 33626
Tel. 800 664 8834
Tel. 813 880 0619
Fax 813 880 9558
info@guldmann.net
www.guldmann.net